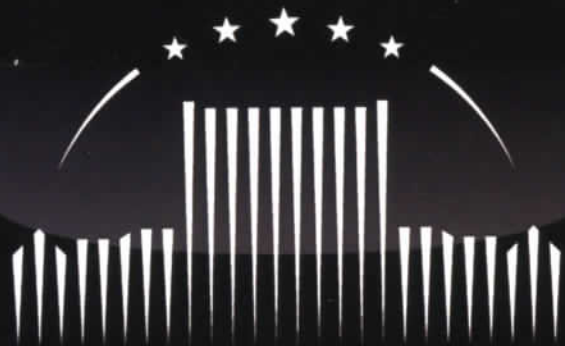


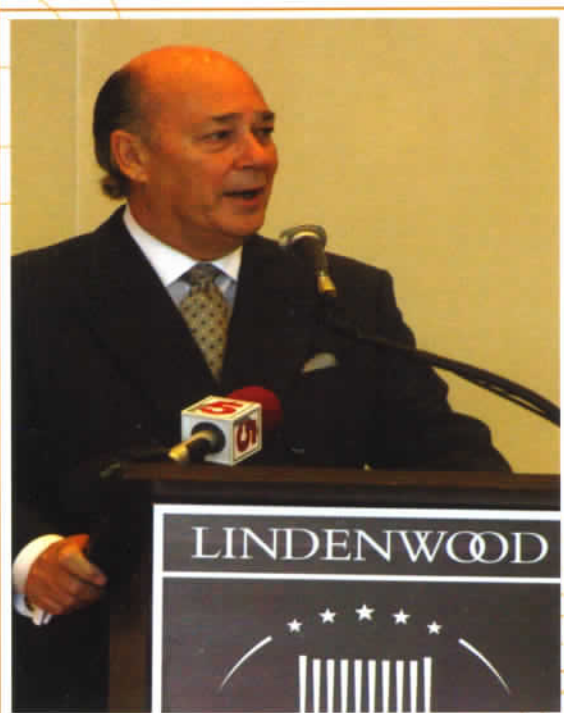
LINDENWOOD



J. SCHEIDEGGER
CENTER FOR THE ARTS

THE STARS ARE MUCH BRIGHTER HERE...
COME SEE FOR YOURSELF.

WELCOME



Dear Patrons,

As the J. Scheidegger Center for the Arts enters its third season, I would like to share with you my joy and enthusiasm over being part of such a wonderful and unique facility. This center not only presents the finest Broadway shows, recording artists, and touring acts, but it offers some of the best student theatre, music, and dance in the Saint Louis area.

Lindenwood University opened this incredible building in 2008 with Liza Minnelli crossing the stage, but it has also seen the likes of Hal Holbrook, Marvin Hamlisch, the Russian National Ballet Theatre, Shen-Yun, *Jesus Christ Superstar*, *Movin' Out*, and many other fine acts. This season's lineup promises to be just as exciting.

But the Scheidegger Center is more than the headliner acts in The Bezemes Family Theater. We have impressive shows in the Emerson Black Box Theater and inspiring art exhibits in the Boyle Family Gallery. Never before have the people in this region been given such a broad variety of entertainment options under one roof. I hope you can join us soon!

Jerry Scheidegger

A LOOK BACK...

As we enter into our third year of bringing sensational Broadway and national tours, musical concerts, world renowned dance, celebrity appearances, and Lindenwood University productions to the Saint Louis community, we take a look back at the stars that have shown brightly here.

A LOOK BACK...



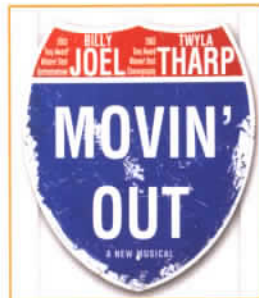
LIZA
MINNELLI



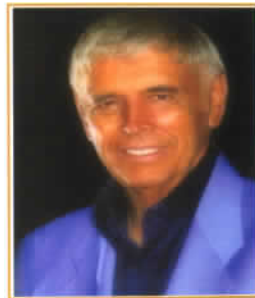
HAL
HOLBROOK



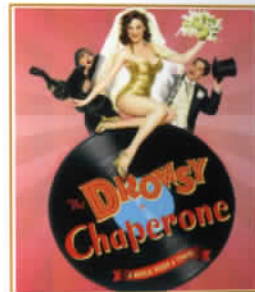
CHERRYHOLMES



MOVIN' OUT:
THE NATIONAL TOUR



ROGER
WILLIAMS



THE DROWSY
CHAPERONE:
THE NATIONAL TOUR



OLIVER
THE NATIONAL TOUR



PAUL
THORNE



THE HOLMES
BROTHERS



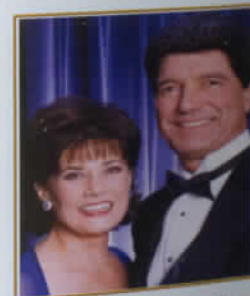
MARVIN
HAMLISCH



DEBBY
BOONE



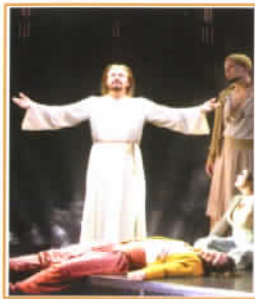
BOBBY
GOLDSBORO



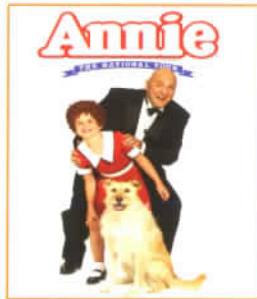
GUY & RALNA



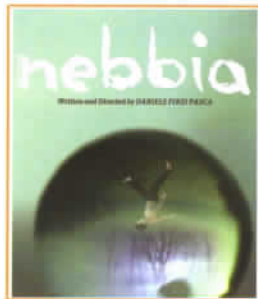
THE RUSSIAN NATIONAL BALLET



**JESUS CHRIST SUPERSTAR:
THE NATIONAL TOUR**



**ANNIE:
THE NATIONAL TOUR**



**CIRQUE ELOIZE
NEBBIA**



**BYE BYE BIRDIE:
THE NATIONAL TOUR**



**CATS:
THE NATIONAL TOUR**



JOAN OSBORNE



THREE DOG NIGHT



**PEACHES &
HERB**



BJ THOMAS



BILLY JOE ROYAL



FREDA PAYNE



JONATHAN EDWARDS



RAY STEVENS

THE BEZEMES FAMILY THEATER

The Bezemes Family Theater is a 1,200-seat Broadway-style theater. Elegant and intimate in its design, the theater has one of the largest and most sophisticated stages in the region. Viewing is pleasant from any vantage point, allowing our patrons excellent visibility, superior sound quality, and comfortable seating. The Lindenwood Main Stage readily accommodates large scale national and Broadway tours, as well as concerts, world-class dance, celebrity appearances, and Lindenwood University productions.

We invite you to join us for unparalleled experiences in the arts and entertainment. The J. Scheidegger Center for the Arts is easily accessible from anywhere in the region. Just minutes from the Saint Louis International Airport, and less than one quarter mile from Interstate 70, the J. Scheidegger Center for the Arts is in a safe, park-like setting on the campus of Lindenwood University. We're easy to find, and ample free parking surrounds this architecturally significant and beautiful facility.





THE EMERSON BLACK BOX THEATER

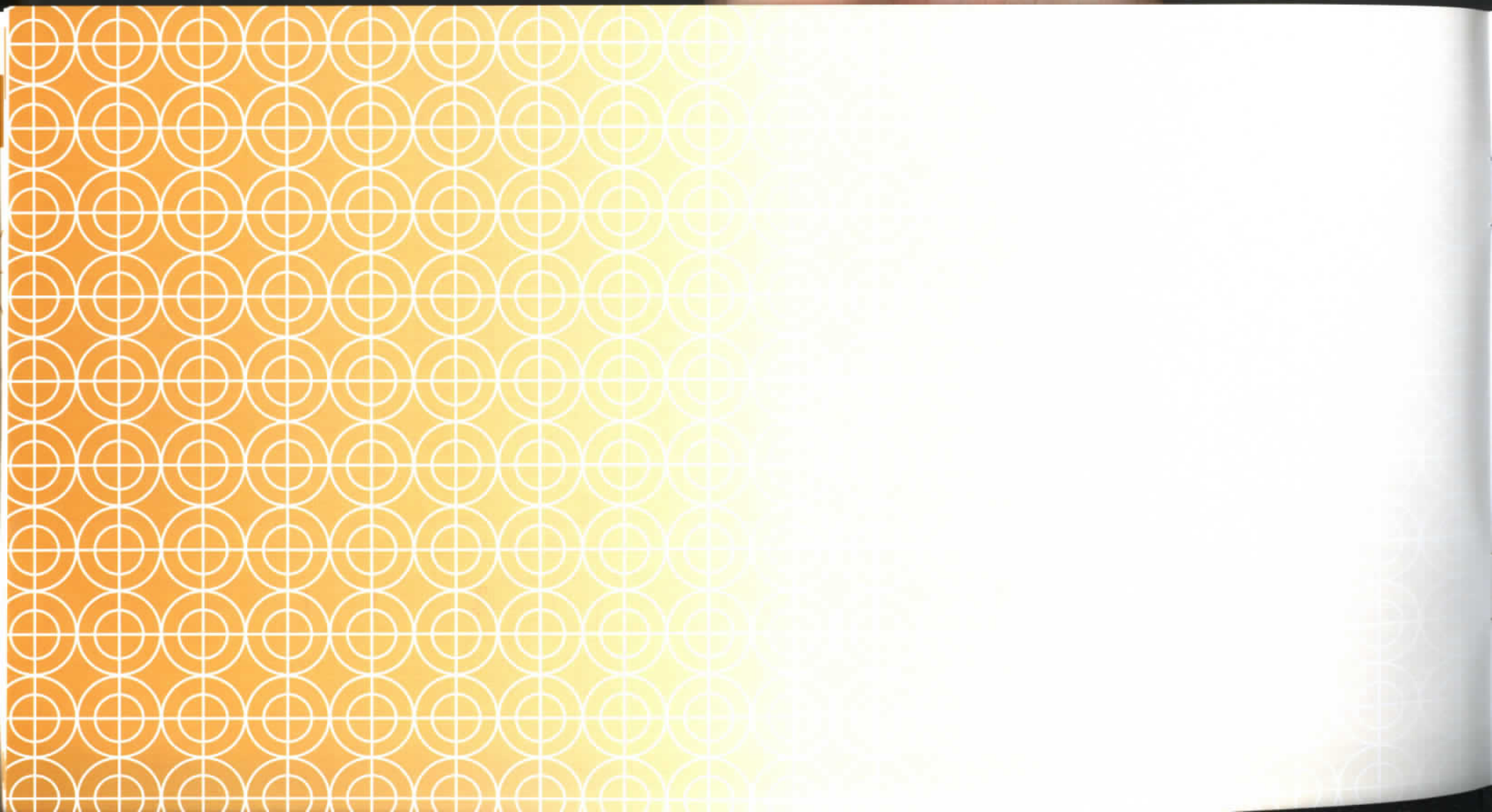
The Emerson Black Box Theater is a flexible space designed to put the audience close to the action. While the size of the audience can be adjusted to suit the production's requirements, one thing that never changes is the intimate relationship between the audience and the performers. The Emerson Black Box Theater can be configured for theater in the round, as a traditional theater, or for anything in between.

Generally seating between 150 and 250 audience members, The Emerson Black Box Theater provides for intimate gatherings in music, dance, drama and experimental theater. Located at the west end of The Grand Lobby, The Emerson Black Box Theater is just steps from The Boyle Family Art Gallery, and The Bezemes Family Theater.

THE BOYLE FAMILY GALLERY

The Boyle Family Gallery is a beautiful, spacious art gallery designed to display a variety of artistic works ranging from fine paintings to sculpture. This state-of-the-art gallery will delight all who visit with works of art from local, national and international artists.

Located at the west end of The Grand Lobby, The Boyle Family Gallery is just steps from The Emerson Black Box Theater, and The Bezemes Family Theater.



UPCOMING
MAIN STAGE PRODUCTIONS

THE BEZEMES FAMILY THEATER | 2010 - 2011 SEASON



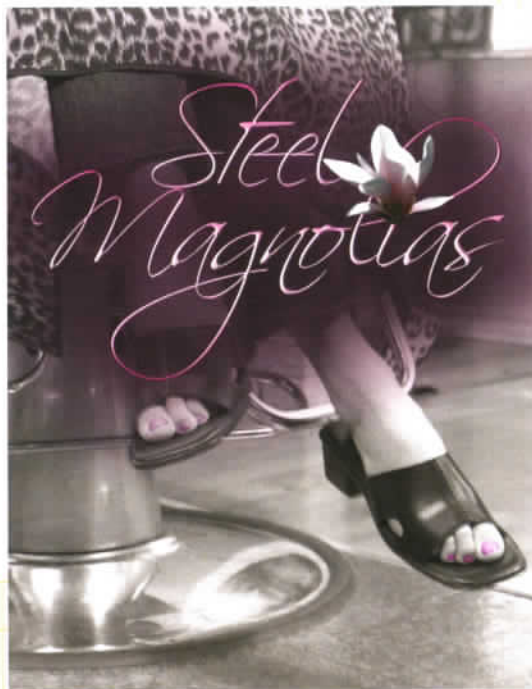
STEEL MAGNOLIAS

SEPTEMBER 9, 10, 11 & SEPTEMBER 16, 17, 18, 2010 | 7:30 PM

The quintessential story of friendship and trust, *Steel Magnolias* serves up a southern slice of life that's as warm and comforting as sweet potato pie! In the world of Truvy's local-homegrown beauty salon, six very different women come together to share their secrets, fears and love for one another while engaging everyone in hysterical and neighborly gossip.

From weddings to divorces, babies to funerals, new beginnings to happy endings, they share each moment in their lives with grace, determination, and perfectly coiffed hair. When tragedy strikes, it is in the familiar comfort of Truvy's salon that they seek the solace and support of each other to carry them through.

Platinum \$18 | Orchestra \$15 | Parterre \$12 | Balcony \$10



GREASE: THE NATIONAL TOUR

OCTOBER 8, 2010 | 8:00 PM - OCTOBER 9, 2010 | 1:00 PM

STARRING: Eddie Mekka as Vince Fontaine! Eddie delighted audiences everywhere as Carmine "The Big Ragu" in the classic hit television show *Laverne & Shirley!*

The one that you want is back! *GREASE*, *Time Magazine's* 2007 pick for "#1 Musical of the Year," is rockin' across the country in this new production direct from Broadway!

Take a trip to a simpler time of poodle skirts, drive-ins, and T-birds. "Bad boy" Danny and "the girl next door" Sandy fall in love all over again to the tune of your favorite songs: "Summer Nights," "Greased Lightnin'," and "We Go Together," as well as "Grease," "Hopelessly Devoted to You," and "You're the One That I Want."

So throw your mittens around your kittens and Hand Jive the night away with the show that'll make you want to stand up and shout, "A-wop-bop-a-loo-bop a-wop-bam-boom!"



Platinum \$48.50 | Orchestra \$41.50 | Parterre \$32.50 | Balcony \$24.50

MARVIN HAMLISCH'S BROADWAY

OCTOBER 16, 2010 | 8:00 PM



Marvin Hamlisch, one of only two composers to win virtually every music award that exists (three Oscars, four Grammys, four Emmys, a Tony, three Golden Globes, and a Pulitzer Prize for his groundbreaking show *A Chorus Line*) will perform his Broadway Program, paying tribute to several composers from Broadway musicals, including music from Cole Porter, Richard Rodgers, Irving Berlin, and Jule Styne. He will perform a variety of his own compositions, including favorites from *A Chorus Line* and *Sweet Smell of Success*, as well as *The Way We Were*, *The Sting*, and other nominated selections from his body of work.

Platinum \$64.50 | Orchestra \$59.00 | Parterre \$56.50 | Balcony \$48.50



Mr. Hamlisch will be joined by Anne Runolfsson and J. Mark McVey.

Anne Runolfsson is one of those rare artists whose unique versatility has allowed her a distinguished career not only in the theater but also in recording studios, intimate cabaret spaces, and concert halls throughout the world. She recently completed a two-year run on Broadway as the tempestuous diva Carlotta Giudacelli in Andrew Lloyd Webber's *Phantom of the Opera*.



Mr. McVey made his Broadway debut as Jean Valjean in *Les Miserables*, after having won the Helen Hayes Award for Outstanding Actor while in Washington, D.C. with the show. He was also the first American to perform the role of Jean Valjean in London's West End, and just completed his seventh full year in the role. In 1997, Mr. McVey made his Carnegie Hall debut with Marvin Hamlisch and is proud to be Mr. Hamlisch's Tenor of choice.

THE BAYANIHAN

PHILIPPINE NATIONAL DANCE COMPANY

OCTOBER 22, 2010 | 8:00 PM

A multi-awarded company, nationally and internationally, Bayanihan has awakened a new pride among Filipinos in their cultural heritage, has preserved and added a new dimension to the country's dance tradition, and has built for the country a rich reserve of international goodwill.



Platinum \$54.50 | Orchestra \$46.50 | Parterre \$38.50 | Balcony \$26.50

Acclaim:

"The show was breath-taking. It was an evening of beautiful costumes, intriguing cultural influences and absolutely incredible dancing."

— John Leisure, *Portsmouth Daily Times*

"Every scene was choreographed and timed down to the second, which made everything spectacular."

— Scott Boardman, *The Clarion*

"I never thought that after seeing the Bayanihan show for 40 years and thousands of times, I could see the same show, the same dances, and see it for the first time."

— Corky Trinidad, *Honolulu Star Bulletin*

"The current American tour of the popular and influential Bayanihan Philippine National Dance Company returns audiences to the age of innocence in adapted folklore."

— Lewis Segal, *Time Dance Critic*

CATS: THE NATIONAL TOUR

NOVEMBER 2, 2010 | 8:00 PM - NOVEMBER 3, 2010 | 1:00 PM



The longest running, most popular, North American touring production in history! There's no better way to introduce your family to the wonders of live theater than with the magic, the mystery, the memory of CATS. What began as a musical about cats after Andrew Lloyd Webber picked up a book of poems in an airport bookshop has become one of the longest running shows in Broadway's history. Winner of seven Tony Awards, including Best Musical, CATS features 20 of Andrew Lloyd Webber's timeless melodies, including the hit song "Memory."

Platinum \$48.50 | Orchestra \$41.50 | Parterre \$32.50 | Balcony \$24.50

THE ONE, THE ONLY, THE ORIGINAL



A CHRISTMAS CAROL

NOVEMBER 18, 19, 20, 2010 | 7:30 PM

DECEMBER 2, 3, 4, 2010 | 7:30 PM

"Charles Dickens' classic has been a holiday tradition at Lindenwood for decades."

Dickens' beloved Christmas story comes to life before your very eyes with a cast of over 30 people!

Join Ebenezer Scrooge on his haunting journey with the Ghosts of Christmas Past, Present, and Future.

Don't miss the Cratchit Family (including Tiny Tim!) and the rest of your favorite Dickens characters as they once again show us the *true* meaning of Christmas.

Platinum \$18 | Orchestra \$15 | Parterre \$12 | Balcony \$10



LEGALLY BLONDE: THE NATIONAL TOUR

DECEMBER 8, 2010 | 8:00 PM

It's here, and it's "AN ELLE OF A SHOW" (*TIME Magazine*). The hilarious MGM film is Broadway's new smash-hit musical, and now *Legally Blonde* is coming to you. *Legally Blonde* follows sorority star Elle Woods, an underestimated blonde who doesn't take "no" for an answer. When her boyfriend dumps her for someone more "serious," Elle puts down the credit card, hits the books, and sets out to go where no Delta Nu has gone before: Harvard Law. Along the way, Elle proves that being true to yourself never goes out of style. After turning Broadway and MTV hot pink, this "Feel-Good Song and Dance Juggernaut" (*New York Magazine*) is "The Best New Musical Around!" (*WOR*).

Platinum \$54.50 | Orchestra \$46.50 | Parterre \$38.50 | Balcony \$28.50



CHRISTMAS WITH:

THE OSMOND BROTHERS

DECEMBER 17, 2010 | 8:00 PM

Join The Osmond Brothers as they perform some of your Christmas favorites!

The Osmond Brothers have been performing in front of world-wide audiences for 50 years. They have practically lived on a stage, thrilling many millions of people with their brand of entertainment.

The Osmonds perform all styles of music. From barbershop, pop, and rock, to country and jazz, their close harmonies cannot be matched by any other group. They have sold millions of albums and have several Gold and Platinum records to their credit. They have broken records for sell-out performances once held by the Beatles and Elvis and have won numerous awards-including the People's Choice Award, and Best Vocal Group and Best Show in Branson, Missouri.

The Osmond Brothers are celebrating their 50th year in entertainment and they just keep getting better and better!



Platinum \$42.50 | Orchestra \$38.50 | Parterre \$32.50 | Balcony \$24.50

CHRISTMAS WITH:

ROGER WILLIAMS

DECEMBER 18, 2010 | 8:00 PM

Spend an evening this Christmas season being serenaded by our very own Christmas tradition, Roger Williams! Mr. Williams will play a mixture of Christmas favorites and a selection from his long list of hits, as well as take requests from the audience!

The first pianist to have a star on the Hollywood Walk of Fame, Roger has 21 Gold and Platinum albums to his credit. He is a Steinway Artist, he is the first and (so far) only artist to receive the Steinway Lifetime Achievement Award, and he was featured at Carnegie Hall for Steinway's 150th anniversary. Roger Williams is also the first to ever have a series of pianos named after him by Steinway. *Reader's Digest* puts it this way, "Roger Williams is undeniably one of the greatest pianists of the 20th Century. His illustrious career in music is unparalleled."

Roger's music has served as the soundtrack to the lives of three generations. He burst upon the music scene when he recorded *Autumn Leaves* in 1955. His version became an American classic and still stands as the greatest selling piano recording of all time. Williams followed with more million-selling records, including *Born Free*, *Impossible Dream*, *Till*, *Near You*, *Almost Paradise*, *Two Different Worlds*, *Lara's Theme* from *Dr. Zhivago*, and the theme from *Somewhere in Time* charting Billboard hits in four different decades.

Platinum \$42.50 | Orchestra \$38.50 | Parterre \$32.50 | Balcony \$24.50



THE RUSSIAN NATIONAL BALLET THEATER PRESENTS
ROMEO & JULIET

JANUARY 21, 2011 | 8:00 PM



The world's most famous love story returns to the stage in a full-length ballet performed by The Russian National Ballet Theater. With their families locked in a bitter feud, Romeo and Juliet's fate is doomed. While they will do anything to be together, their families will do anything to keep them apart. This highly dramatic and visually stunning production features more than 50 dancers upholding the grand tradition of Russian ballet in the tragic tale of Shakespeare's *Romeo and Juliet*.

Acclaim:

"The Russian National Ballet Theater, directed by Elena Radchenko, is a cut above many of its rivals."

— *Alexandera Tomalonis, Washington Post*

Platinum \$54.50 | Orchestra \$46.50 | Parterre \$38.50 | Balcony \$26.50

TANGO BUENOS AIRES PRESENTS: FIRE & PASSION

JANUARY 27, 2011 | 8:00 PM



Tango Buenos Aires has become one of Argentina's great cultural exports, known throughout the Americas, Europe, and the Far East as the most authentic and uncompromising representative of the Tango.

Platinum \$54.50 | Orchestra \$46.50 | Parterre \$38.50 | Balcony \$26.50

Acclaim:

"Fast and furious, the dancers' feet and legs flashed and wove in and around each other, or paused to move slowly and seductively, stretching the tension within the dance."

— *Lincoln Journal Star*

"Sometimes playful, sometimes dramatic, and always sensuous, the closely entwined bodies and limbs moved with amazing speed through deftly engineered movements, including frequent dips, deep slides, energetic foot stomps and ballet-like turns."

— *Ruidoso News*

"...repeatedly crafted swirling, fast-paced tapestries of movement, laced with proud postures and sensual couplings."

— *The Washington Post*

BJ THOMAS & GARY PUCKETT IN CONCERT

FEBRUARY 12, 2011 | 8:00 PM

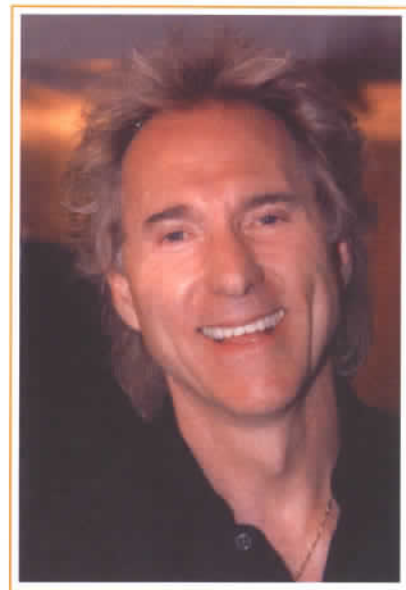
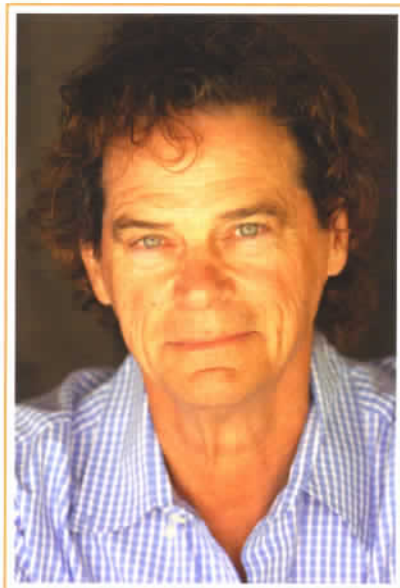
With over 70 million records sold, BJ Thomas's vocal versatility is as apparent today as it was when he recorded his first hit in 1967, "I'm So Lonesome I Could Cry".

Since the mid-1960s, BJ Thomas has become one of the most recognized and respected voices of the American musical landscape. He has impacted many areas of popular music with 15 Top-40 pop hits, 10 Top-40 country hits, 5 Grammys, 2 Dove awards and 15 Gold and Platinum records. He is the only artist to successfully move to the top of three music genres not as a crossover and also have crossover success.

BJ appeared on the stage of The Bezemes Family Theater in March 2010 for the taping of the PBS National Television Special *Marvin Hamlisch Presents: The '70s, The Way We Were*.

Gary Puckett and The Union Gap had six consecutive gold records and sold more records in 1968 than any other recording act, including The Beatles. He is one of only a few artists whose first five releases went Gold—not even Elvis accomplished this. Mr. Puckett played a command performance at The White House for Prince Charles and Princess Anne by special invitation of the president. One of Gary's biggest hits includes the fan-favorite "Young Girl." It was reissued by popular request in England, where it reached number-1 and achieved a Silver Record Award for the second time. He currently resides in Clearwater, Florida, with his wife and family.

Platinum \$54.50 | Orchestra \$46.50 | Parterre \$38.50 | Balcony \$28.50



URINETOWN

MARCH 3, 4, 5 & MARCH 10, 11, 12, 2011 | 7:30 PM



One of the most uproariously funny musicals in recent years, *URINETOWN* is a hilarious tale of greed, corruption, love, and revolution in a time when water is worth its weight in gold. In a Gotham-like city, a terrible water shortage, caused by a 20-year drought, has led to a government-enforced ban on private toilets. The citizens must use public amenities, regulated by a single malevolent company that profits by charging admission for one of humanity's most basic needs. Amid the people, a hero decides he's had enough, and plans

a revolution to lead them all to freedom! Inspired by the works of Bertolt Brecht and Kurt Weill, *URINETOWN* is an irreverently humorous satire in which no one is safe from scrutiny. Praised for reinvigorating the very notion of what a musical could be, *URINETOWN* catapults the "comedic romp" into the new millennium with its outrageous perspective, wickedly modern wit, and sustained ability to produce gales of unbridled laughter.

Platinum \$18 | Orchestra \$15 | Parterre \$12 | Balcony \$10

DEBBY BOONE: REFLECTIONS OF ROSEMARY

MAY 7, 2011 | 8:00 PM

Debbi Boone earned instant fame in 1977 when the song "You Light Up My Life" became an overnight hit. The tune, which outranked even The Beatles by claiming the number-1 spot on the *Billboard* charts for ten straight weeks, sold in excess of four million copies; the album went double platinum with sales in excess of two million. The song went on to win an Academy Award® for Best Song in a Motion Picture, and Debbi received the GRAMMY® Award for Best New Artist of the Year.

Reflections of Rosemary is an intimate musical portrait of Debbi's late mother-in-law, the legendary singer Rosemary Clooney (as seen in the classic motion picture *White Christmas* with Bing Crosby and Danny Kaye). The performance is a deeply heartfelt tribute to the unforgettable Rosemary, a woman for whom Debbi had great love and respect.

"I wanted to select songs that would give an insight into Rosemary from a family perspective, and from the more than 30 years that I spent with her," says Boone.

Debbi performed in March 2010 on the stage of The Bezemes Family Theater during the filming of PBS's National Television Special *Marvin Hamlisch Presents: The '70s, The Way We Were*.

Debbi has also appeared in numerous Broadway and nationally touring productions.

Platinum \$42.50 | Orchestra \$38.50 | Parterre \$32.50 | Balcony \$24.50



BOBBY GOLDSBORO

COMING SPRING 2011

Bobby Goldsboro's career has been a remarkable evolution.

In 1964 Bobby started his solo career by recording the first of a string of 16 Top-40 hits, "See the Funny Little Clown." He hit the Billboard charts with 29 consecutive singles. More million-selling hits followed, setting the stage for 1968 and the classic, "Honey," which became the largest-selling record in the world! "Watching Scotty Grow" was 1971's No. 1 Soft Rock and Adult Contemporary hit and his recordings of "Little Green Apples" and "With Pen in Hand" have also become classics.

The 1993 television season saw the hit CBS comedy *Evening Shade* premiere with a new theme song, written and performed by Bobby. The six-time Grammy nominee was also the new musical director of the show, which starred his buddy, Burt Reynolds.

Recently, the energetic dynamo decided to pursue another lifelong passion, oil painting! He has quickly gained a reputation as a world-class artist. Bobby will have a special showing of his original oil paintings in The Boyle Family Gallery for several weeks following his concert performance.

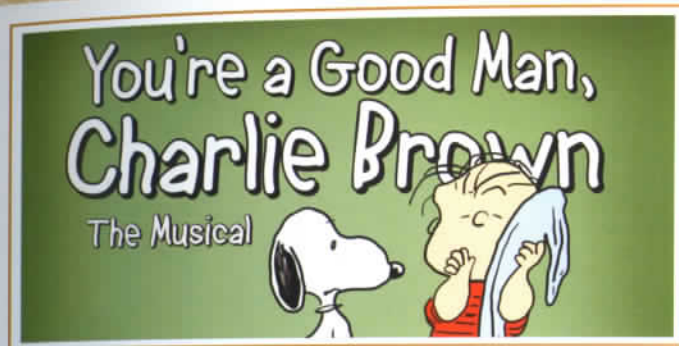
Bobby performed in the PBS Television Special *Marvin Hamlisch Presents: The '70s, The Way We Were*, filmed before a live audience at Lindenwood's J. Scheidegger Center for the Arts in March, 2010.



Platinum \$42.50 | Orchestra \$38.50 | Parterre \$32.50 | Balcony \$24.50

UPCOMING STUDENT THEATER PRODUCTIONS

THE EMERSON BLACK BOX | 2010 - 2011 SEASON



YOU'RE A GOOD MAN, CHARLIE BROWN

OCTOBER 7, 8, 9 & OCTOBER 14, 15, 16, 2010 | 7:30 PM

It's an average day in the life of Charlie Brown-it really is just that, a day made up of little moments picked from all the days of Charlie Brown, from Valentine's Day to the baseball season, from wild optimism to utter despair, all mixed in with the lives of his friends (both human and non-human) and strung together on the string of a single day, from bright uncertain morning to hopeful starlit evening.

General Admission \$15

SHE STOOPS TO CONQUER

FEBRUARY 3, 4, 5, 2011 | 7:30 PM

Most everyone has been the target of practical jokes, and most have been out on blind dates. Oliver Goldsmith bases his 1773 comedy *She Stoops to Conquer* on two such incidents, creating a complicated, convoluted plot based on miscommunication and mistaken identities.

General Admission \$10

ONE FLEW OVER THE CUCKOO'S NEST

APRIL 14, 15, 16 & APRIL 21, 22, 23, 2011 | 7:30 PM

Randle Patrick McMurphy is a charming rogue who contrives to serve a short sentence in an airy mental institution rather than in a prison. During his fraudulent stay, McMurphy invokes the head nurse's antagonism by inciting revolution among the inmates.

General Admission \$10

UPCOMING STUDENT MUSIC PRODUCTIONS

2010 - 2011 SEASON

JAZZ BAND CONCERT

November 3, 2010 | 7:30 PM

Groove along with Lindenwood University's Jazz Band in the intimate setting of The Emerson Black Box Theater.

Free General Admission

ORCHESTRA CONCERT

November 4, 2010 | 7:30 PM

Join the Lindenwood University Orchestra for an enchanted evening of music. Sway with the deep bass, flow with the brass, and soar with the violins during a night that you'll be sure to remember.

Free General Admission

CHOIR CONCERT

November 5, 2010 | 7:30 PM

The Lindenwood choirs will present an eclectic collection of sound, from European Classical styles to popular American songs. The choirs will feature music of Brahms, Gounod, Billy Joel and the Beatles. Enjoy performances of University Chorus, Concert Choir, and Voices Only.

Free General Admission



UPCOMING STUDENT DANCE PRODUCTIONS

2010 - 2011 SEASON

FALL DANCE CONCERT

November 11, 12, 13, 2010 | 7:30 PM

The Fall Dance Concert will feature choreography by faculty, graduate students, and guest artist Gwen Meeker (Class of 2009.)

Dance styles will include Ballet/Pointe, Contemporary, Jazz, Hip Hop, Modern, and Tap.

General Admission \$10

STUDENT DANCE CONCERT

February 16, 17, 18, 19, 2011 | 7:30 PM

The Student Dance Concert will feature new works from undergraduate students. Some of the students are first-time choreographers, and others are fulfilling part of their major requirements.

Students not only create the choreography, but are also responsible for their own costumes

Free General Admission

SPRING DANCE CONCERT

April 14, 15, 16, 2011 | 7:30 PM

The first half of the Spring Dance Concert will feature new works created by senior dance majors as part of their culminating (Senior Thesis) project.

The second half of the concert will feature the Lindenwood University Dance Ensemble and include choreography by faculty, graduate students, and Dance Ensemble members.

General Admission \$10





PREMIER PATRONS MEMBERSHIP - \$125.00

Don't miss the chance to be part of our Premier Patrons Membership program!

Support the Arts, and our students, while receiving these benefits:

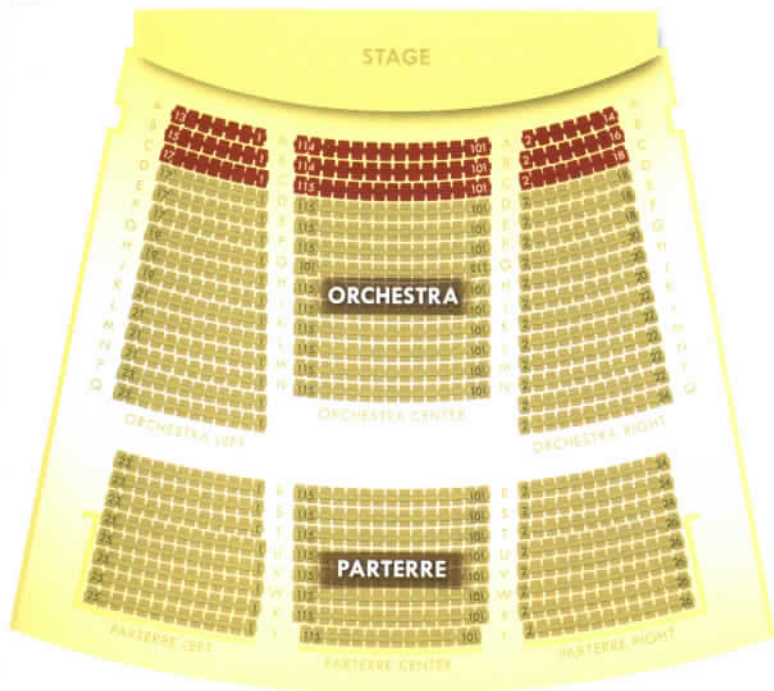
- Complimentary Valet Service for all Main Stage productions.
- Recognition on the Annual Membership display for the 2010-2011 Season.
- 10% Discount on Performance Package purchases.
- 20% Discount on all Lindenwood University student productions.
- Exclusive invitations to private Premier Patrons receptions with celebrity and VIP guests.
- Premier Patrons Membership honored at many local businesses for special events and discounts.
Complete list of participating businesses available at www.LindenwoodCenter.com

Please contact The Box Office at (636) 949-4433 for details.

For Corporate Sponsorship Opportunities, please contact the Director of Marketing at (636) 949-4512.

SEATING CHART

PARTERRE AND ORCHESTRA



PLATINUM SEATING IN RED

BALCONY



PLATINUM SEATING IN RED

MAIN STAGE PERFORMANCE PACKAGES - PER SEAT

A. BROADWAY AND NATIONAL TOURS

Grease: The National Tour

October 8, 8:00 PM | October. 9, 1:00 PM

CATS: The National Tour

November 2, 8:00 PM | November. 3, 1:00 PM

Legally Blonde: The National Tour

December. 8, 8:00 PM

1. PLATINUM	\$151.50
2. ORCHESTRA	\$129.50
3. PARTERRE	\$103.50
4. BALCONY	\$77.50

B. WORLD RENOWNED DANCE

The Bayanihan Philippine National Dance Company

October 22, 8:00 PM

The Russian National Ballet Presents: *Romeo and Juliet*

January 21, 8:00 PM

Tango Buenos Aires Presents: *Fire & Passion*

January 27, 8:00 PM

1. PLATINUM	\$163.50
2. ORCHESTRA	\$139.50
3. PARTERRE	\$115.50
4. BALCONY	\$101.50

C. LIVE & IN CONCERT

Marvin Hamlisch's Broadway

October 16, 8:00 PM

BJ Thomas & Gary Puckett: In Concert

February 12, 8:00 PM

Debbie Boone: In Concert

May 7, 8:00 PM

1. PLATINUM	\$161.50
2. ORCHESTRA	\$144.50
3. PARTERRE	\$127.50
4. BALCONY	\$101.50

D. A VERY MERRY CHRISTMAS

Lindenwood's *A Christmas Carol*

November 18, 19, 20, 7:30 PM

December 2, 3, 4, 7:30 PM

Christmas With The Osmond Brothers

December 17, 8:00 PM

Christmas With Roger Williams

December 18, 8:00 PM

1. PLATINUM	\$130.00
2. ORCHESTRA	\$92.00
3. PARTERRE	\$77.00
4. BALCONY	\$59.00

ORDER YOUR PERFORMANCE PACKAGE TODAY!

To order multiple types of Performance Packages or if you require handicap-accessible seating, please contact The Box Office directly.
For individual ticket purchases, please contact The Box Office or Telecharge.

THE BOX OFFICE:

Phone: (636) 949-4433

Email: Lindenwood@shubertorg.com

Address: Lindenwood's J. Scheidegger Center for the Arts
2300 West Clay Street
Saint Charles, MO 63301

Hours: Monday - Friday: 10:00 AM - 6:00 PM
Saturday: 10:00 AM - 2:00 PM



Telecharge.com

(800) 447-7400

Mail your Order:

Please detach and bring the form below to The Box Office or mail it to the address listed.
Once your order is received, a Box Office agent will contact you to confirm your seating, dates, times and show-related information.

NAME: _____
ADDRESS: _____
CITY | STATE | ZIP: _____
DAY PHONE: _____
EMAIL: _____

PERFORMANCE PACKAGE - Circle one: A B C D Performance 1: _____
SEATING SECTION - Circle one: 1 2 3 4 Performance 2: _____
_____ x _____ = _____ Performance 3: _____
Section Cost Number of People Subtotal Date Time

PAYMENT

AMEX Visa Mastercard Discover

CARD #: _____

EXPIRATION DATE: _____

NAME ON CARD: _____

SIGNATURE: _____

SUBTOTAL : _____

*PREMIER PATRONS MEMBERSHIP : \$125.00

GRAND TOTAL : _____

*The 10% Discount on your Performance Package purchase with your Premier Patrons Membership will be calculated once your order is received.



THE STARS ARE MUCH BRIGHTER HERE...
COME SEE FOR YOURSELF.