



LINDEN WORD

87-88

Vol. 4, No. 1

Winter '88

College-Soviet Exchange

In a league with such prestigious institutions as Stanford, Yale and Harvard universities, Lindenwood is one of 10 colleges and universities in the United States embarking upon a unique student-exchange program with the Soviet Union.

Initiated entirely by members of the Lindenwood Student Government, the program will involve a group of Lindenwood students and faculty spending a week next year at a university in the U.S.S.R. and a group of Soviet students spending a week on the St. Charles campus. For details on this unique program, the first ever to pair American and Soviet universities for a reciprocal exchange of undergraduate students, see page 6.

A Powerful Boost for KCLC-FM

Seven years of planning became a reality recently when Lindenwood's community radio station, KCLC-FM, positioned itself as a major median in the metropolitan area with an increase in power from 1,500 to more than 25,000 watts. KCLC-FM Radio now has a stronger and sharper signal, enabling it to reach more than 95 percent of the estimated 2.4 million population in the metropolitan area. Turn to page 3 and, if you are in the area, turn your FM dial to 89.1

Mid Rivers Mall Opening Cites Lindenwood

St. Charles County's newest retail development, the \$100 million Mid Rivers Mall in St. Peters, honored Lindenwood in special grand-opening ceremonies recently. The college was one of two charitable organizations to receive nearly \$10,000 for ticket sales at the gala opening. A check, funds from which will go to the Performing Arts Dept. for equipment at Jelkyl Theatre, was presented to Lindenwood President James I. Spainhower by Robert L. Ferguson, chairman and president of May Centers, Inc., developers of the mall, during the gala event this fall. For the complete story, see page 3.

Descendent Visits Campus

Robert Easton, a veteran Hollywood character actor and an internationally-known dialect expert, saw his ancestors' creation when he visited the Lindenwood campus for the first time this summer. The 57-year-old Easton is an 11th generation American and the great-great grandson of Rufus Easton, the father of Lindenwood founder, Mary Easton Sibley. Editor Randy L. Wallick spent a day with Easton as he toured the campus and gathered material for his genealogy, and Wallick's feature story on this fascinating Sibley descendent appears on pages 10-11.

Colleges Form Unique Pact

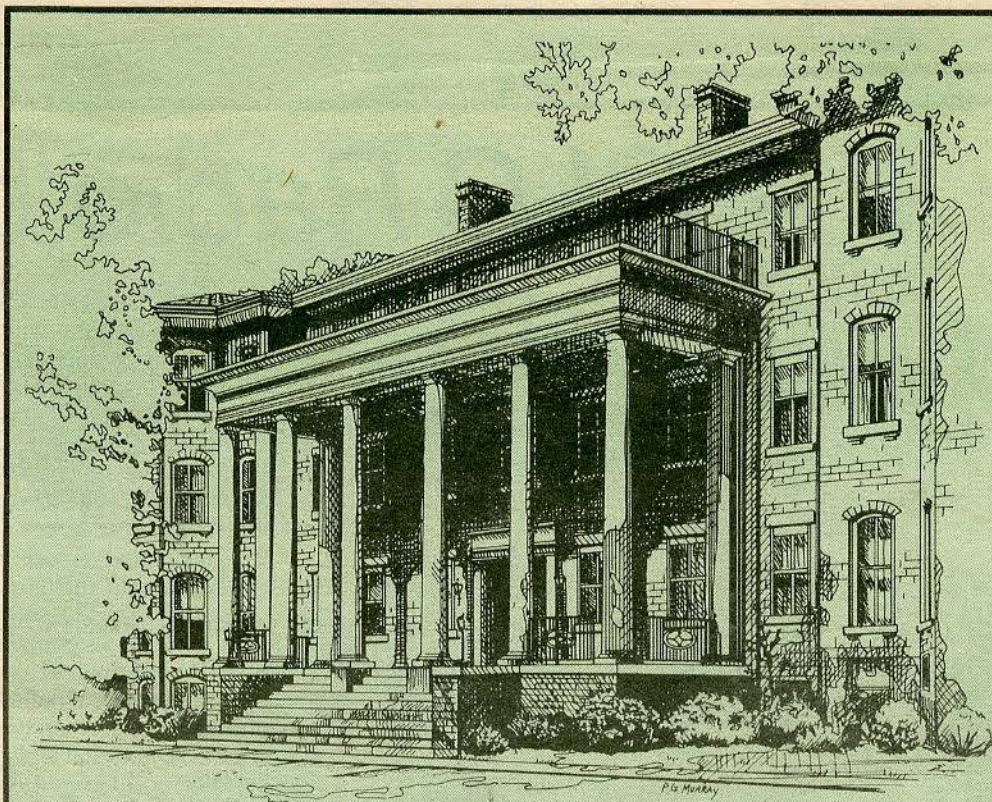
St. Charles County's newest educational institution, the St. Charles Community College, and its oldest, Lindenwood, joined forces with adoption of a cooperative agreement recently. The pact is designed to better serve graduates of the two-year community college who wish to continue studies at Lindenwood. For a look into this unique agreement, which was approved by boards of both colleges and signed by President James I. Spainhower and Community College President Donald D. Shook, turn to page 4.

Alumni Honor St. Louis TV Broadcaster

Lindenwood's St. Louis Metropolitan Noonday Alumni Group presented its first Noonday Award recently to television broadcaster Kathy Leonard, a general assignment reporter for KSDK-TV in St. Louis and a 1972 alumna of Lindenwood. For a glimpse into the life of one of Lindenwood's outstanding alumni and why the Noonday Group selected her for its prestigious award, turn to page 8.

Lindenwood Donor Honor Roll

Lindenwood completed the 1986-87 fiscal year with cash and total contributions of \$1.66 million — the most successful one-year support record in college history! To honor those who contributed to this effort, including 48 percent of Lindenwood's alumni, turn to page 12 for a list of donors. This listing is only for gifts received July 1, 1986, through June 30, 1987.



A Challenge for Our Next 160 Years

by James I. Spainhower, President

As we face a new year in the midst of our 160th anniversary celebration, Lindenwood College has a challenge for the future — to strengthen itself as an even greater independent institution and to position itself as one of the most dynamic liberal arts colleges in the United States.

The college's challenge is shaped by its splendid past year. Its outlook for the future is one of growth, development and increasing its range of educational opportunities for those who turn to Lindenwood to receive a highly-individualized college education.

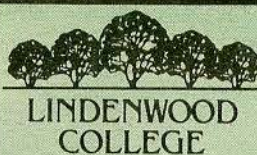
Since the early 19th century, the Sibleys and other Lindenwood leaders have strived to make sure that careful investments in higher education bring rich returns in personal and professional success.

The Sibleys' dream is never more evident nor our challenges more real than now, as Lindenwood finished recording its most successful one-year support record in its history. This has been achieved by a record \$1.66 million in cash and total contributions during the past fiscal year, by the addition of corporate and civic backing for the college and, perhaps most importantly, by a record of 48% in alumni support, the highest in Missouri and one of the greatest in the country.

But, we must expand our efforts. Our challenges demand the best from all members of the college community — its alumni, boards, the community, corporations, faculty, friends, parents, staff and students. Perhaps never before in its 160-year history has there been a more important challenge and the need for a more committed and unified effort than during the next few years as Lindenwood eyes the 21st century.

We must meet our challenge by securing the college for the future. We must re-double our efforts on behalf of the college. Lindenwood will need to recruit more students and raise more money than ever before. And, in the midst of seasonal giving, there is no better time than the present to show our support for Lindenwood. The newly-created Butler Society, details of which can be found on page 20, is one of the best ways we can secure the future so Lindenwood can continue to meet its challenges.

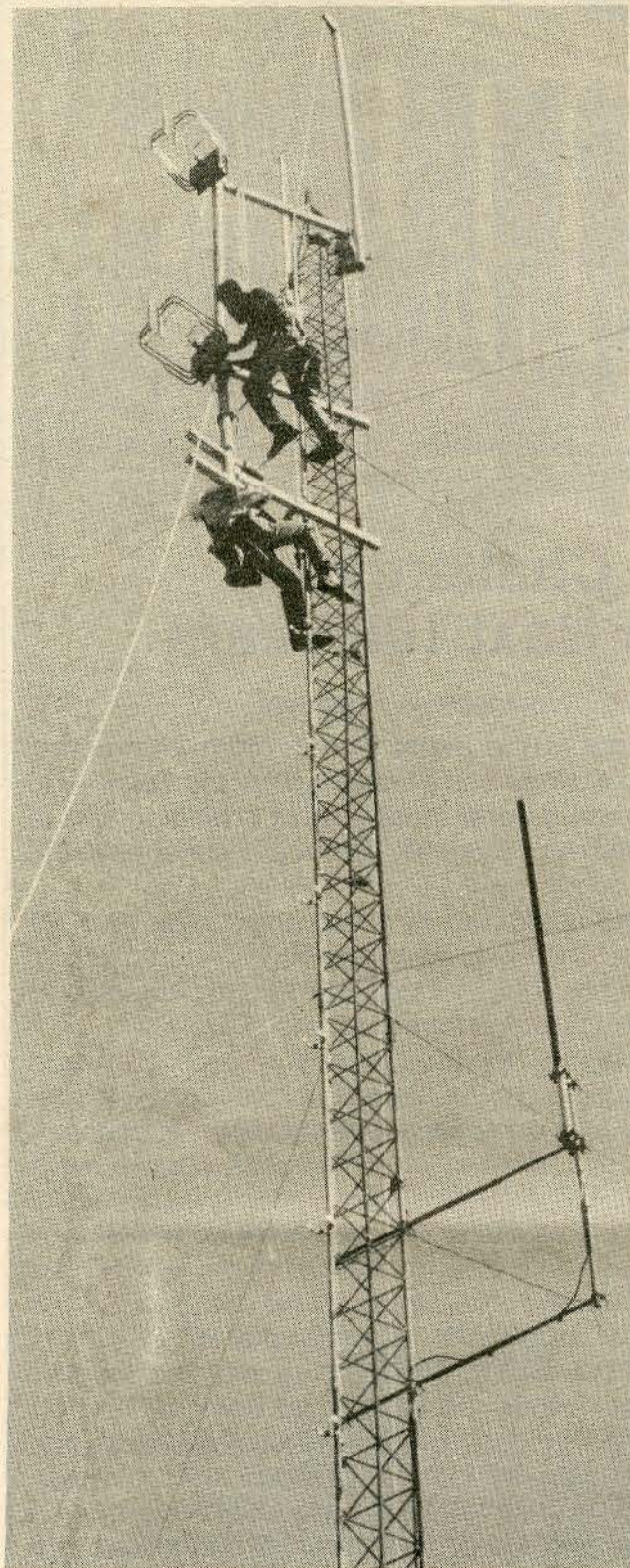
As the new year emerges, our responsibility to the future demands no less than our best efforts. Each and every one of us must become an ambassador for this wonderful institution. Together, we have proven that when alumni, friends, parents, students and supporters join forces, only positive results can transpire at Lindenwood College.



Non Profit Org.
U.S. Postage
PAID
Permit No. 84
St. Charles, Mo.

Address Correction Requested

KCLC Radio boosts power



Lindenwood's community radio station, KCLC-FM, has positioned itself as a major median in the metropolitan area with its recent power increase from 1,500 to 25,500 watts.

Increased community coverage, remote broadcasts, on-air endorsements, new or expanded programs and a week-long fund-raising campaign are going on as KCLC-FM draws attention to its sharper, stronger signal resulting from its power increase.

A formal dedication took place recently to observe the power increase and to draw attention to the 19th anniversary of the FM station. Guests included Kathy Leonard, general assignment reporter for KSDK-TV and a 1972 Lindenwood alumna; James G. Maurer, manager of community relations for Southwestern Bell Telephone and chairman of the KCLC Board of Advisors; Lindenwood College President James I. Spainhower; and James A. Wilson, general manager of KCLC Radio and chairman of the college's Communications Dept.

In November, the radio station aired messages from local and state community, business, civic and political leaders, congratulating it on the power increase and the anniversary of the station's formation in October, 1968.

According to Glynelle Wells, special projects director for KCLC-FM, the power increase allows Lindenwood's community radio station to be heard clearly throughout the metropolitan area. The increased power also provides a sharper signal, enabling listeners throughout St. Charles and St. Louis counties to receive better quality reception, she added.

According to Wilson, planning for the recent power increase began as early as 1980, while the application was filed with the FCC in 1982. "It's been a long, draining battle," Wilson said, "since we ran into a large number of unanticipated road blocks during the past several years.

NEW HEIGHTS — At left and below, workers move and install transmitter and antenna equipment for KCLC-FM's recent power increase from 1,500 to 25,000 watts. More than five years in the planning stage, the power increase means Lindenwood College's community radio station now reaches more than 95 percent of the population in the two-state metropolitan area. A sharper, stronger signal also results from the increase, enabling listeners to receive better quality reception on 89.1 FM.

"However, our signal now reaches more than 95 percent of the population in the metropolitan area. I hope the people in our new service area take the opportunity to share with our unique public radio programming as soon as possible," he added.

Earlier this year in anticipation of the power increase, KCLC increased its community service programming. New or expanded additions to its 18.5 hours of daily programming include "Dimension," a community issue-oriented program; "Business Update" to provide financial and business news; the daily "Community Calendar" to provide announcements of community events; and expanded jazz and bluegrass, including "Band Beat" to provide information on local jazz entertainment.

The station will be involved in upcoming community activities, such as live broadcasts from Mid River Mall in St. Peters, joint sponsorship of area concerts, live broadcasts of high school football each Friday in St. Charles county and coverage of the state high school football championships.

KCLC, 89.1 on the FM dial, broadcasts entertainment, cultural and public service programs as well as award-winning bluegrass, jazz, new wave and religious music from 5:30 a.m. to midnight each day. Utilized as an instructional tool for Lindenwood's communications program, the station is staffed primarily by volunteers and students.

KCLC Radio began in 1948 as a closed-circuit station on the Lindenwood campus. Twenty years later, a 10-watt FM station was established for broadcast to the City of St. Charles and, in 1972, that station increased its power to 1,500 watts to provide coverage to the metropolitan area. In 1983, KCLC-FM began stereo broadcasts.

Accreditation until 1994!

The North Central Association of Schools & Colleges (NCACS) has granted continued accreditation to Lindenwood College until 1994 - the maximum that can be received from the Chicago-based accrediting body.

"This accreditation is quite an accomplishment," said President James I. Spainhower, "and it is indicative of the continuing value of a degree from this institution."

According to James F. Hood, former dean of faculty who served as coordinator for the NCACS study, "The accrediting team gave us high marks for our academic program. In fact," he added, "in every NCACS evaluation we've had recently, the association has never knocked our academic program, always saying that the college is a high-quality, liberal arts institution."

With member institutions in 19 states, the NCACS covers the largest portion of the United States as an official accrediting body for colleges and universities. It has granted accreditation to Lindenwood College since 1918.



LINDENWOOD
COLLEGE

ROBERT F. HYLAND,
Chairman, Board of Directors

RONALD W. OHMES
Chairman, Board of Overseers

JAMES I. SPAINHOWER
Lindenwood President

RANDY L. WALLICK
Editor & PR Director

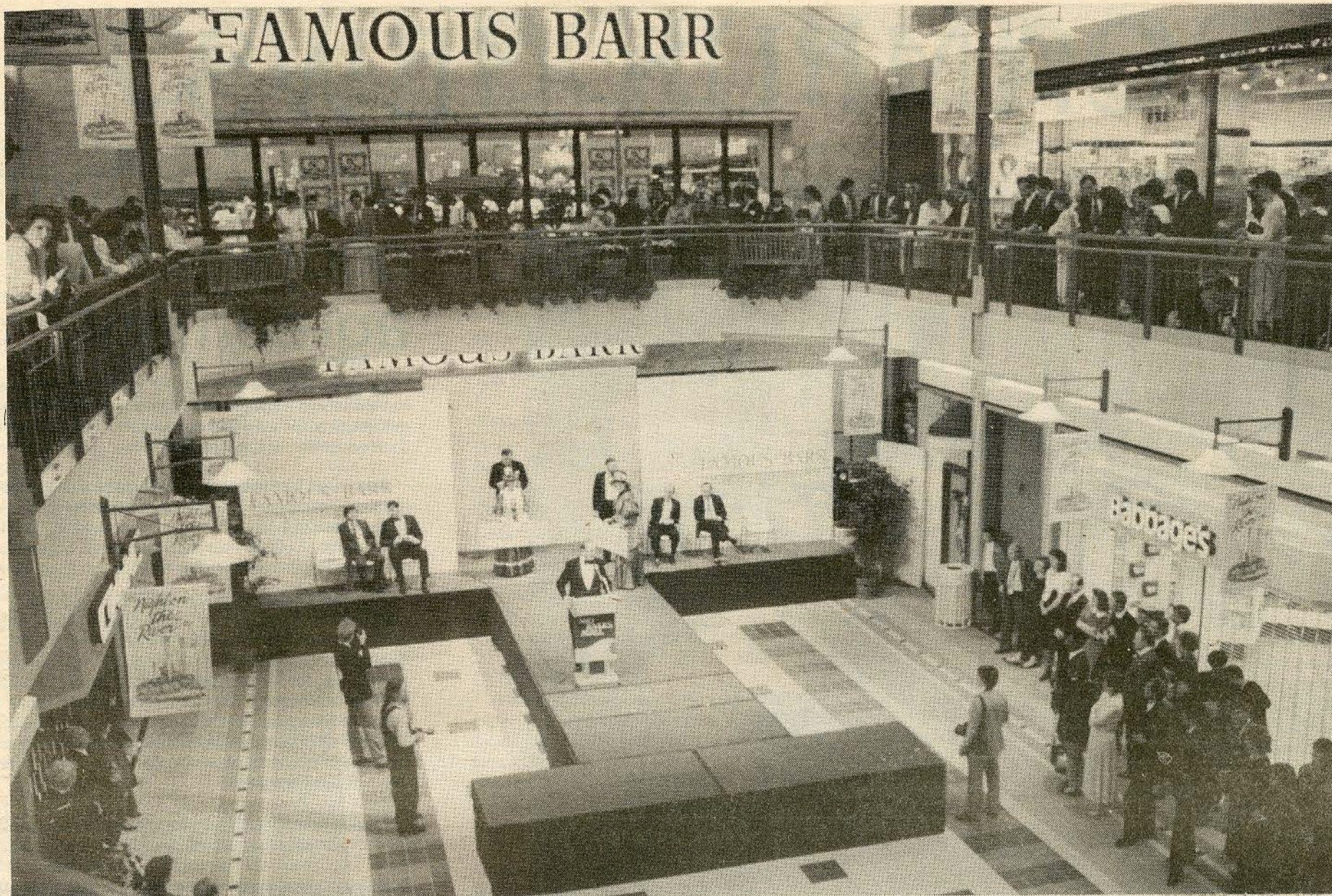
MAURITA E. STUECK ('41)
President, Alumni Council

ESTHER TALBOT FENNING ('77)
Alumni Affairs Director

Written and produced by the Lindenwood College Public Relations Dept., *The Linden Word* is published quarterly and disseminated free of charge to nearly 30,000 alumni, friends and supporters of the college.

Views and opinions appearing in this publication are not endorsed necessarily by the Lindenwood College Board of Directors or the Lindenwood Board of Overseers.

Address all communications, letters, subscription requests and changes of address (include both the mailing label from the current issue along with the new address and proper zip code) to: Public Relations Dept., Lindenwood College, First Capitol Drive and Kingshighway, St. Charles, MO 63301.



College President Jim Spainhower addresses Mid Rivers Mall guests

Gala opening honors county's oldest institution

Lindenwood was one of two charitable organizations elected to benefit from the Mid Rivers Preview Grand Opening Celebration which took place this fall at the \$100 million shopping center in St. Peters.

The college and Four County Mental Health, Inc., each received nearly \$10,000 from the sale of nearly 1,000 tickets both organizations received for the gala event, courtesy of the May Centers, Inc., developers of the mall.

Included as part of this year's effort to secure \$1 million in fund raising, proceeds from ticket sales for the Mid Rivers Mall opening were earmarked to the Performing Arts Dept., which had an integral part in the opening festivities. Specifically, funds will be used for equipment for Jelkyl Theatre, a chief cultural source in St. Charles County for nearly 50 years.

With a theme of "Night on the River," grand opening ceremonies featured Art Fleming, well-known television broadcaster and former host of "Jeopardy," serving as master of ceremonies. Also taking part in opening ceremonies were a number of business, civic, political and community leaders, including Lindenwood President James I. Spainhower, who officially announced the beginning of the college's 160th anniversary this year.

As the oldest institution in St. Charles County, Lindenwood was selected to participate in opening ceremonies with the newest facility in the county - Mid Rivers Mall.

"As the newest member of the community, it is an honor to recognize the academic achievements of Lindenwood College, the oldest member of the community and the second-oldest educational institution west of the Mississippi," said Robert L. Ferguson, chairman and president of May Centers, Inc.

Sales of the tickets for the mall's grand opening were coordinated for Lindenwood by a 60-member blue ribbon committee chaired by Keith W. Hazelwood of Thompson & Mitchell, St. Charles, and Catherine O. Pundmann of Pundmann Ford of St. Charles, both members of the Lindenwood College Board of Overseers.

Accepting the check from May Centers, Inc., Spainhower said, "The opening of Mid Rivers Mall is a solid indication of the economic vitality of St. Charles County. This new addition to the retail offerings of the county helps to insure that shopping in St. Charles County will continue to be exciting and absolutely state of the art!"

Continuing, the president said, "Lindenwood, this year celebrating its 160th year of offering state of the art higher education experiences for its students, is pleased that its excellent Performing Arts Dept. has been designated to receive a share of the ticket sales from the mall's grand opening celebration.

"Theatre always has been a vital ingredient in Lindenwood's life," Spainhower said, and "funds from this benefit will help the college continue providing both education and entertainment to the community through its Performing Arts Dept.," he said.

Centered around a theme of "Night on the River," the Mid Rivers Mall grand opening attracted nearly 2,500 people to the three-hour celebration. Many of the mall's 100 shops and speciality stores were open during the event to provide patrons with a preview and sample of some of their goods and services. The mall, with a capacity of 110 stores, officially opened the following day, October 14.

Providing entertainment were students of Lindenwood's Performing Arts Dept., under the direction of

Daniel Alkofer, Ph.D., department chairman. Lindenwood presented several olios, a series of vaudeville acts throughout the evening, and "River Review," a presentation with authentic scenes and costumes from the turn of the 20th century on the Missouri and Mississippi Rivers.

Other entertainment was provided by Tanya Tungate, former Miss Missouri who did a repertoire from the musical, "Showboat"; the Pat Holt Singers; and the Singleton Palmer Jazz Band. Accenting the river theme were food and beverage stations at nine locations within the mall, each of which offered different selections from towns on the rivers, such as New Orleans, St. Louis and Hannibal, MO.

As part of the week-long grand opening, KCLC Radio presented live broadcasts from Mid Rivers Mall.

\$20,000 gift

Lindenwood has received a contribution of \$6,667 from the Ralston Purina Co. of St. Louis as the first installment in a three-year, unrestricted pledge of \$20,000 made to the St. Charles-based institution.

In announcing the recent gift, Lindenwood President James I. Spainhower expressed the college's deep appreciation to John L. Lenza, manager of the Contributions Program for Ralston Purina, and to William P. Stirtz, chairman, president and chief executive officer of the St. Louis-based firm.

The Ralston Purina gift has been earmarked to the college's general fund to be used for student scholarship assistance, facilities improvement and campus renovation and repair.



AN AUTUMN PICNIC — Lindenwood's picturesque campus provided the backdrop for a "Welcome Back B-B-Q" this fall for students, faculty and staff. The second annual event was hosted by the Lindenwood College Board of Overseers whose members utilized the opportunity to meet with the Lindenwood family. The picnic, termed a tremendous success, was arranged by overseers in cooperation with the college's Development Office and Tracy L. Mathis, a St. Charles attorney and chairperson of the board's Student Support Committee.

Colleges form cooperative agreement

Lindenwood and St. Charles Community colleges have adopted a cooperative agreement to better serve graduates of the two-year college who wish to continue their education at Lindenwood.

Approved by the boards of directors of both institutions, an agreement recently was signed by Lindenwood President James I. Spainhower and St. Charles Community College President Donald D. Shook during a formal ceremony at the Holiday Inn at St. Peters.

The two-page document calls for cooperative curriculums to ensure that community college graduates can transfer their credits to Lindenwood, for the creation of a number of 2+2 programs between both institutions, for cooperation between the faculties and staffs of both colleges, for joint promotion of the cooperative agreement between both schools, and for joint development of scholarship programs for community college students who want to pursue two more years at Lindenwood.

The agreement also calls for the establishment of an advisory board of representatives from both institutions. The board will "promote the cooperative relationship . . . and suggest new avenues for cooperation which will be in the interests of both institutions and the citizens of St. Charles County."

Spainhower called the agreement a symbol "of a great spirit of cooperation between the oldest and newest institutions in the county, Lindenwood and the community college. It shows that we'll work together, and I welcome the new college," he said.

Shook said the pact took advantage of the proximity of the two colleges. "We can do things that would not be possible if we were some distance apart. I believe we can offer the maximum potential to our students by expanding their opportunities."

A new look for theatre

Lindenwood College's theatre faculty of the Performing Arts Dept. has a new, more stable look this season, prompted by the recent appointments of three full-time faculty members.

Joining Lindenwood this year as chairman and professor of performing arts is Daniel W. Alkofer, Ph.D., formerly of Madison, WI. While teaching stage directing and other subjects and developing the theatre department, Alkofer also will direct two Mainstage Theatre productions, "A Christmas Carol" during the holiday season and next semester's presentation of "Rhinoceros."

Other full-time appointments include Suzanne E. Mills as assistant professor of acting, and Greg Hillmar as resident scenic and lighting designer and technical director.

Alkofer holds an undergraduate degree in philosophy from Oberlin College in Ohio, an M.A. in theatre from the University of Iowa, and a Ph.D. in theatre history from Indiana University. With 19 years of experience in teaching at both the undergraduate and graduate levels, his most recent academic appointment is that of head of the Theatre Dept. at Oklahoma State University.

Besides work at colleges and universities, he has been production consultant for a dinner theatre in Madison, and he has worked at a civic theatre in Austin, TX. Alkofer has directed 33 full-length productions, and his credits also include numerous assignments in acting and lighting design. His special interest areas

include directing, theatre history and dramatic literature, especially British theatre from Shakespeare to the Georgian period.

Commenting on his aspirations for Lindenwood College, Alkofer said, "There is a great deal of rebuilding and development ahead of us. The potential is here to make Lindenwood the artistic center of St. Charles County, and I am committed to every effort to make that happen.

"I'm very pleased that the department combines music and dance with theatre," Alkofer said, "since the three fields frequently are combined. I also plan to revive the community support organization of the performing arts at Lindenwood, and to develop close ties with the community," he added.

Mills joins the college faculty after serving two years as a visiting professor. As assistant professor of acting, she not only teaches undergraduate and graduate courses, but also directs Mainstage productions. Her past work has included "Round and Round the Garden," "El Grande de Coca-Cola" and "She Stoops to Conquer." Earlier this semester, Mills directed the opening production, "Foxfire," and next semester, she will direct Lindenwood's production of "Hedda Gabler."

Mills completed her undergraduate work at the State University of New York at Stony Brook, and earned a Master of Fine Arts degree at Indiana University. In conjunction with the Lindenwood Performing Arts Dept., Mills recently received for the second year the

Camelot Grant from the Arts & Education Council of Greater St. Louis for her children's play, "A New Twist," which will tour elementary schools in the area later this year.

An actress, she has appeared as Loretta in the Kennedy Center's ANTA touring company's production of "A History of the American Film." She has been an instructor at Indiana and Indiana State Universities, and has served as a co-host of "PM Magazine" in Terre Haute, IN.

Hillmar's scenic and lighting experiences include assignments with the Nevada Dance Theatre, the Virginia State Ballet, the Tidewater Ballet, Capital Ballet Gala at the Kennedy Center, the University of Texas at Austin, Dogwood Dell Amphitheatre, the Little Theatre on the Square in Sullivan, IL, and others.

The fourth full-time theatre position is held by Niki Juncker, who joined Lindenwood in 1981. Former acting department chairman in 1986-87, she is an associate professor and costume designer for the Performing Arts Dept.

These four full-time faculty members hope to bring forth an exciting and successful 1987-88 season of productions to the entire St. Louis area. Upcoming are Henrik Ibsen's "Hedda Gabler," to be performed February 25-27 and March 3-5, and Eugene Ionesco's "Rhinoceros," slated April 14-16 and 21-22. The two shows, which will be staged in Jelkyl Theatre in Roemer Hall at 8 p.m. each day, complete the Mainstage Theatre's presentations for the 1987-88 academic year.



COLLEGE KUDOS

President James I. Spainhower is serving as temporary chairman of the newly-formed St. Charles County Conference on Education (SCCCE), an organization addressing the total educational concerns of the county. Membership includes superintendents of all of the county's public school districts, representatives of private elementary and secondary schools and presidents of Lindenwood, St. Mary's and St. Charles County Community Colleges.

"There is a strong feeling among St. Charles County educators," Spainhower said, "that educators and the institutions they represent must be organized sufficiently on a county-wide basis to assure the continuation of quality educational opportunities for all areas of St. Charles County." Establishment of the SCCCE is viewed as a viable means of helping the county as a whole address its growing educational concerns in a unified manner, he added.

Thomas L. Gossage, senior vice-president of Monsanto Chemical Co., and **Walter L. Metcalfe, Jr.**, an attorney with Bryan, Cave, McPheeters & McRoberts in St. Louis, have been elected vice-chairman of the Lindenwood College Board of Directors. Chaired by **Robert F. Hyland**, senior vice-president of the CBS Radio Division and general manager of KMOX-AM and KHTR-FM Radio in St. Louis, the 30-member board oversees the management and operation of Lindenwood College. Gossage, who also serves as Development Chairman of the board, has been a member since 1983, while Metcalfe has served since 1969.

Lindenwood has named **V. Peter Pitts**, former director of admissions for the Chicago office of Monmouth College, as Director of Admissions for the Day College. He will be responsible for directing admissions efforts in the recruitment of students for the Day College, primarily full-time, traditional-age ones.

Since 1985 he has been responsible for the marketing, strategic planning, goal setting and recruiting in the Chicago area for Monmouth, a four-year private college affiliated with the Presbyterian Church (U.S.A.). Prior to his position at Monmouth, he was director of admissions for the Chicago office of Wartburg College of Waverly, IA, and for Saint Francis College in Fort Wayne, IN. A 1974 graduate of Wartburg, he holds a graduate degree in sociology from the University of Iowa.

Maggie Kracke, former director of marketing and business for St. Mary's College in O'Fallon, MO, has been appointed Director of Off-Campus Centers. A former adult admissions counselor and corporate recruiter for Lindenwood, she directs the college's West Port Center in Maryland Heights and the Downtown Center in St. Louis.

Kracke served in the Lindenwood Placement Office for a few months before being named director of the college's Lake St. Louis Faculty in 1981, a position she held for two years. In 1983, she joined the admissions staff in St. Charles and later was named corporate representative and adult admissions coordinator. Kracke holds both undergraduate and graduate degrees in business administration from Lindenwood, awarded, respectively, in 1981 with an emphasis in marketing, and in 1985 with an emphasis in human resource development.

Marsha Hollander Parker of St. Charles, former head of personnel and volunteer services for the St. Charles City-County Library, has been named Director of Admissions for Evening & Corporate Programs. She will be responsible for recruiting students for the Evening College, LCIE, Saturday Campus and graduate and corporate programs.

A 1971 graduate of Lindenwood, she holds a graduate degree in theatre, awarded in May. Prior to her appointment with the library in 1978, she served as a deputy juvenile officer with the Missouri 11th Judicial Circuit Court, as Director of Volunteers for the St. Louis State School & Hospital, and as a teacher of psychology and religion at Duchesne High School from 1971-72.

Daniel N. Keck, vice-president of academic affairs and dean of faculty, has received an honorary membership in Alpha Lambda Delta, the national scholastic honor society that recognizes superior academic performance among college and university students. Keck serves as liaison administrator of the Lindenwood chapter, while **Edith Graber**, associate professor and chairperson of sociology, is faculty advisor. Established in 1924 at the University of Illinois, Alpha Lambda Delta has a membership of more than 325,000 at 206 chapters at colleges and universities throughout the United States.

Daniel W. Alkofer, a former university professor, is the new chairman of the Performing Arts Dept. For the past year, he served as production and design consultant for the Showroom of the Concourse Dinner Theatre in Madison, WI. From 1981-85, he was associate professor of acting, directing and theatre at Oklahoma State University (OSU) and, from 1969-81, was an assistant and associate professor at Idaho State University where he also served as business manager of theatre and auditorium manager. At OSU, he was chairman of the Dept. of Theatre at the Stillwater campus from 1981-84.

Alkofer has more than 20 years of stage direction experience in addition to post-graduate expertise in lighting design, acting and narration. A 1962 graduate of Oberlin College in Ohio, he has a graduate degree in dramatic art, awarded by the University of Iowa, and a doctorate degree in theatre, awarded by Indiana University.

Paintings by **W. Dean Eckert**, professor and chairman of art, recently were shown in regional juried exhibits in Kansas City and Evansville, IN. An acrylic painting, "Velazquez at Segovia," was included in an exhibit at the Nelson Gallery in Kansas City that was open to artists in Missouri as well as adjacent states of Iowa, Kansas and Nebraska. Out of more than 1,550 entries, Eckert's and 60 other were selected.

Another painting, "Segovia: Casa de los Picos," was displayed this summer in the Realism Today Exhibit at the Evansville Museum of Arts and Science. Indiana artists and those living within 200 miles of Evansville were eligible to submit entries for the juried showing. Eckert's acrylic painting was purchased during the exhibit for the corporate collection of Bristol-Myers of Hillsdale, NJ.

Rao Ayyagari, assistant professor of biochemistry; **Niki Juncker**, assistant professor of theatre; **Anthony Perrone**, assistant professor of modern languages; and **Wanita A. Zumbrennen**, assistant professor of English, each have been promoted to associate professors at Lindenwood. Ayyagari and Perrone have been members of the faculty since 1969, while Juncker has been with the college since 1981 and Zumbrennen since 1980.

Larry Sackman, director of Financial Aid & Scholarships, has been elected president of the St. Charles Optimist Club, a 75-member community organization. Sackman, who recently completed his M.B.A. degree at Lindenwood, has been a member of the administrative staff since 1983.

Malone Aderholt, former executive secretary in marketing engineering for Monsanto, has been appointed assistant director of off-campus centers. Aderholt, who took an early retirement from Monsanto after 23 years of service, will work at Lindenwood's off-campus center in west St. Louis County. A graduate of Oklahoma State University, she is pursuing a graduate degree in counseling at Lindenwood.

Five members of the Art Dept. faculty were represented in "Faculty '87," an invitational exhibit recently held at the St. Louis Artists Guild. Faculty members are **Dean Eckert**, chairman and professor of art; **Mark A. Fisher** and **Nancy Follis**, adjunct instructors; **Hans Levi**, associate professor of art; and **John H. Wehmer**, professor of art. The five were among more than 80 artists/instructors selected for single exhibits in varied media. The one-month showing was represented by 16 colleges and universities in the two-state metropolitan St. Louis area.

Allen M. Schwab, former Dean of College Life, has been promoted to Dean of the Undergraduate College, an expanded position created recently by Lindenwood. Schwab will be responsible for the area of academic advising, including both the preceptor and the advising for majors programs; the coordination of retention efforts; new student orientation and other areas related to the academic status and progress of students.

A member of the college since 1983, Schwab also serves as associate professor of English. A 1964 graduate of the University of Illinois at Urbana, he holds a graduate degree from the University of Washington and a Ph.D. in English from Tufts University.

James G. Maurer, manager of community relations for Southwestern Bell Telephone and a member of the Lindenwood College Board of Overseers, has been appointed chairman of the KCLC Board of Advisors, a group that provides directions for improving the overall efficiency and effectiveness of the college's 25,500-watt community radio station, KCLC-FM.

Barbara A. Carusa, a 1987 graduate of the University of Missouri-Columbia, has joined the college as an admissions counselor responsible for recruiting traditional-age students in Illinois. During the past year, she served as a personnel assistant and intern at the University of Missouri-Columbia Hospital & Clinics where she was responsible for nurse recruitment and for screening applicants for service. Carusa also was a resident assistant at the Columbia campus from 1985-87. She is the sister of Lindenwood Controller Mary C. Martin.

Athletic Director Deborah Kehm, is Lindenwood's representative in the Show-Me Collegiate Conference, a group of National Association of Intercollegiate Athletics (NAIA) schools formed to promote positive ideals and objectives of athletics. The group will also provide members with athletic engagements, with a forum to formulate guidelines and solve common problems, and with promotion and enhancement of NAIA athletics within the academic environment.

Charter members in addition to Lindenwood include Columbia, Fontbonne, Hannibal-LaGrange, Harris-Stowe State and Missouri Baptist colleges. Additional members will be admitted with the unanimous approval of charter members.

Former Director of Development **James D. Thompson** has been named Executive Director of Development, a newly-created position with added responsibilities. A 1983 Lindenwood alumnus, he formerly served as Major Funds Coordinator until he was named to his previous position in 1984. With the appointment, Thompson serves as a member of the Executive Committee, a group composed of **President James I. Spainhower** and the three vice-presidents that meets weekly to administer college policy.

Keith W. Hazelwood, a former chairman of the Lindenwood College Board of Overseers, and **Daniel N. Keck**, vice-president of academic affairs and dean of faculty, are co-chairmen of the Task Force on Public Education in St. Charles County, a newly created body sponsored by the Industrial Development Authority of St. Charles County.

The task force will study public education in the county, focusing on the financing of public education, the perceptions of business and government about the quality of education, the relationships among school districts and college and universities, and strategic planning of the county's education system.

Randy L. Wallick, public relations director, has been selected for inclusion in the 1988 edition of **American Publishing Who's Who in Society**, a biographical directory of civic and professional men and women.

Alan Shiller, assistant professor of speech, taught an advanced communications seminar on public presentations recently to members of the Communications Workers of America at its annual conference at the University of Georgia in Athens, GA.

CAMPUS NEWS

Children's literature exhibit opens

The Patricia C. McKissack Collection of Black Children's Literature opened this fall with a permanent display at Butler Library on the St. Charles campus.

The collection of books is by, for and about black Americans, including first drafts, research notes, original art, correspondence and other working papers of McKissack, a well-known author and educator.

Included in the collection are children's books for and about black Americans, including representative titles by William Armstrong, Gwendolyn Brooks, Ashley Bryan, Donald Crews, Pat Cummings, Paula Fox, Nikki Giovanni, Bette Greene, Eloise Greenfield, Virginia Hamilton, James Haskins, Langston Hughes, Ezra Jack Keats, Sharon Bell Mathis, Ann Herbert Scott, John Steptoe, Mildred Taylor, Brenda Wilkenson and other authors and poets.

A native of Nashville, TN, McKissack graduated from Tennessee State University at the age of 19 and taught ninth-grade English in Leabon, TN, before joining Kirkwood schools in 1970, becoming the district's first black faculty member. She served as Children's Book Editor at Concordia Publishing House in St. Louis from 1977-82 before beginning a career in writing in 1983 along with her husband, Fred McKissack.

According to Nancy Polette, a nationally-known author or children's books and assistant professor of education at Lindenwood, "As McKissack sees it, white history in America is a part of black history in America and, likewise, black history in America should be a part of white history. She wants to make minority literature, whether fiction or nonfiction, available to all age readers," added Polette, founder of Book Lures, Inc., of O'Fallon. The collection at Lindenwood College is made possible by a continuing grant from Book Lures.

"McKissack strives to give accounts of positive role models for blacks and whites to read about and imitate. She points out that the American blacks are more

closely similar to American whites than they are to black Africans. And, American whites have more in common with American blacks than with white Europeans.

"Therefore," Polette said, "we need to learn as much about each other's history and similarities as we can. McKissack hopes to create a bond among the cultures and, through her writing and collections, she is succeeding by providing all levels of readers with black literature as a way to help bridge the racial and minority gaps in our country."

Members of the community and college honored McKissack during a reception September 27 to mark the opening of the collection.

The McKissack Collection of Black Children's Literature is one of several community events planned this term as Lindenwood College celebrates its 160th anniversary this year. It can be viewed during normal hours of Butler Library.

College-Soviet exchange

Lindenwood is among 10 colleges and universities in the country embarking on a unique student-exchange program that will bring a group of Soviet students to the campus.

Initiated entirely by members of the the Lindenwood Student Government (LSG), the program will involve a group of Lindenwood students and faculty spending a week at a university in the U.S.S.R. and a group of Soviet students spending a week at Lindenwood.

"The exchange program is the first ever to pair American and Soviet universities for reciprocal exchange of undergraduate students from all academic disciplines," said Ronald W. Watermon, a junior from Fenton who is president of LSG and project coordinator for the Lindenwood-Soviet exchange program. "It is an invaluable introduction to the U.S.S.R. and an opportunity to meet counterparts face to face," he added.

Faculty advisor for the program is C. Edward Balog, Ph.D., chairman and professor of history at Lindenwood and a member of the St. Charles City Council. Students who will participate in the Soviet exchange

program have not been selected.

Co-sponsored by the Citizen Exchange Council (CEC) and the Soviet Student Council, the program involves the pairing of 10 American and 10 Soviet universities in 1988, including Lindenwood.

Lindenwood students will augment their traditional classroom education and form their own impressions of the Soviet Union based upon first-hand experience of Soviet culture and society. Through meetings with Soviet counterparts, students will explore common interests and concerns, and also will identify cultural and ideological barriers which often hinder the process of successful dialogue and negotiation, the CEC said.

Watermon said there is a three-year commitment to the exchange program, and an annual budget cost of \$20-\$30,000. "The LSG currently is in the process of fund raising, and it hopes to gain both corporate and philanthropic support from throughout the metropolitan area," he said.

Services held for three from college

Carol T. Gray

Services were held November 7 at West Baptist Church in St. Louis for Carol T. Gray, a 28-year-old mother of two and a Lindenwood College graduate student who was murdered November 4 after attending classes at the college's Westport Campus.

A 41-year-old janitor of an office building near Westport Plaza in St. Louis County has been arrested in connection with the killing. The suspect, Creston H. Austin of Bel Ridge, MO, has been charged with second-degree murder and armed criminal action. Ms. Gray was wounded fatally with her own handgun after she and Austin allegedly struggled inside her car.

Ms. Gray, who was single, lived alone in an apartment in north St. Louis County with her two children, Megan, 6, and Brad, 3. Her apartment was near the residence of her mother, Synobia Gray, and her younger brother, Darrell, 22.

She worked at the Metro Community Health Center as a health educator for the past four years. Ms. Gray specialized in the disease of sickle-cell anemia, and she worked closely with students in high schools in St. Louis to spread information about the illness.

A 1982 graduate of Southern Illinois University-Edwardsville with an undergraduate degree in health education, Ms. Gray, was pursuing graduate studies for an M.B.A. degree at Lindenwood.

In addition to her two children, mother and brother, she is survived by a sister, Renee Campbell of Tupelo, MS.

Lindenwood College's Circle K Club is collecting donations for the two children in their mother's memory. Donations will be presented to the family during the holiday. Donations also will continue after

the holidays, and they can be made by forwarding contributions to the Circle K Club, in care of the Development Office, Lindenwood College, St. Charles, MO 63301.

Lula Clayton Beale

Dr. Thomas W. Doherty

The Lindenwood College community expresses condolences to friends of Lula Clayton Beale, registrar emeritus, and to the family of Thomas W. Doherty, professor emeritus of modern language.

Services were held at the Kraefer Funeral Home in Pompano Beach, FL, for Miss Beale, who died at her Pompano Beach resident Nov. 13 at the age of 76.

A memorial service for Dr. Doherty was held Nov. 16 at St. Charles Presbyterian Church. Dr. Doherty died of apparent pneumonia Nov. 12 at St. Joseph Health Center in St. Charles at the age of 75.

Miss Beale joined Lindenwood College in 1952 as head resident of Butler Hall and as assistant to the Director of Guidance and Counseling, after a 23-year teaching career in public schools. Two years later, she was appointed registrar, a position she held for 20 years until her retirement in 1974. At the time of her retirement, the Lindenwood faculty voted unanimously to bestow upon her the title of registrar emeritus.

Following her retirement, Miss Beale resided in St. Charles until 1982 when she moved to a retirement community in Pompano Beach.

Miss Beale held an A.B. degree from Murray State College in Kentucky and an M.A. from the George Peabody College for Teachers in Nashville. She was a member of the American Association of University Women, Altrusa, the Association of Fine Arts and

the St. Charles Historical Society. She also was a member of Delta Kappa Gamma, an international educational society in Murray, KY.

Miss Beale has no immediate survivors. Memorials in her name may be made to the Harry D. Hendren Memorial Fund for Art, in care of Lindenwood College.

Dr. Doherty retired from the Modern Language Dept. as an instructor of French at Lindenwood in 1977 after serving on the faculty for 27 years. At the time of his retirement, the faculty bestowed upon him the title of professor emeritus of modern language.

He received an undergraduate degree from Westminster College in Fulton, MO and his graduate and D.M.L. degrees from Middlebury College in Vermont. He also held a Certificat de Pronociation Francaise from the Institut de Phonetique in Paris, France, and a Diplome de Literature Francaise Contemporaine from Sorbonne in Paris.

Dr. Doherty was a member of the American Association of Teachers of French, and he was an Army veteran of World War II.

Recently, he had been studying piano and organ with Groff Bittner, assistant professor of music at Lindenwood. Last April, he presented a community recital at Lindenwood, featuring selections from Bach, Mozart, Chopin and Debussy. Dr. Doherty also served as a church organist at St. Charles Presbyterian Church.

He is survived by his widow, Christiane of St. Charles; a daughter, Anne Khosropour of Maid Madison, WI; a son, Daniel Doherty of Seattle, WA; a sister, Helen Watson of Denver, CO; and five grandchildren.

Memorials in Dr. Doherty's name may be made to either Lindenwood College, St. Charles Presbyterian Church or the St. Joseph Health Center Hospice in St. Charles.

CAMPUS NEWS

Promotions expanded by college

Lindenwood College is utilizing a number of media for its current advertising program to heighten awareness about the 160-year-old institution and to strengthen its non-traditional enrollment.

The advertising program is part of a multi-faceted marketing objective to not only increase enrollment and awareness, but to increase fund raising and to position Lindenwood as a leader in independent education.

For this year's advertising program, which began in August, the college is placing print insertions in *The Riverfront Times*, a weekly tabloid with a circulation of more than 100,000; *St. Louis*, a monthly magazine with a circulation of 28,000; and, to promote its M.B.A. and adult programs, in *Commerce* magazine, the official monthly magazine of the St. Louis Regional Commerce & Growth Association, and in the weekly *St. Louis Business Journal*. Lindenwood insertions also appeared in the premiere issue of *St. Louis Woman*, a tabloid insert in the *Business Journal*.

Other specialized publications being used are public television station KETC's *Nine Magazine*, the "College Guide" supplement of *The Riverfront Times* and the *Business Journal*'s annual "Book of Lists," an information directory on key St. Louis industries and companies and the people behind them.

Recently, Lindenwood has contracted with Media Networks, Inc., to place advertisements in three national magazines comprising the St. Louis News Network. Lindenwood ads are appearing in regional editions of *Newsweek*, *Time*, and *U.S. News & World Report*, the three magazines that comprise the News Network with a combined circulation of nearly 100,000 in St. Louis and St. Louis and St. Charles counties.

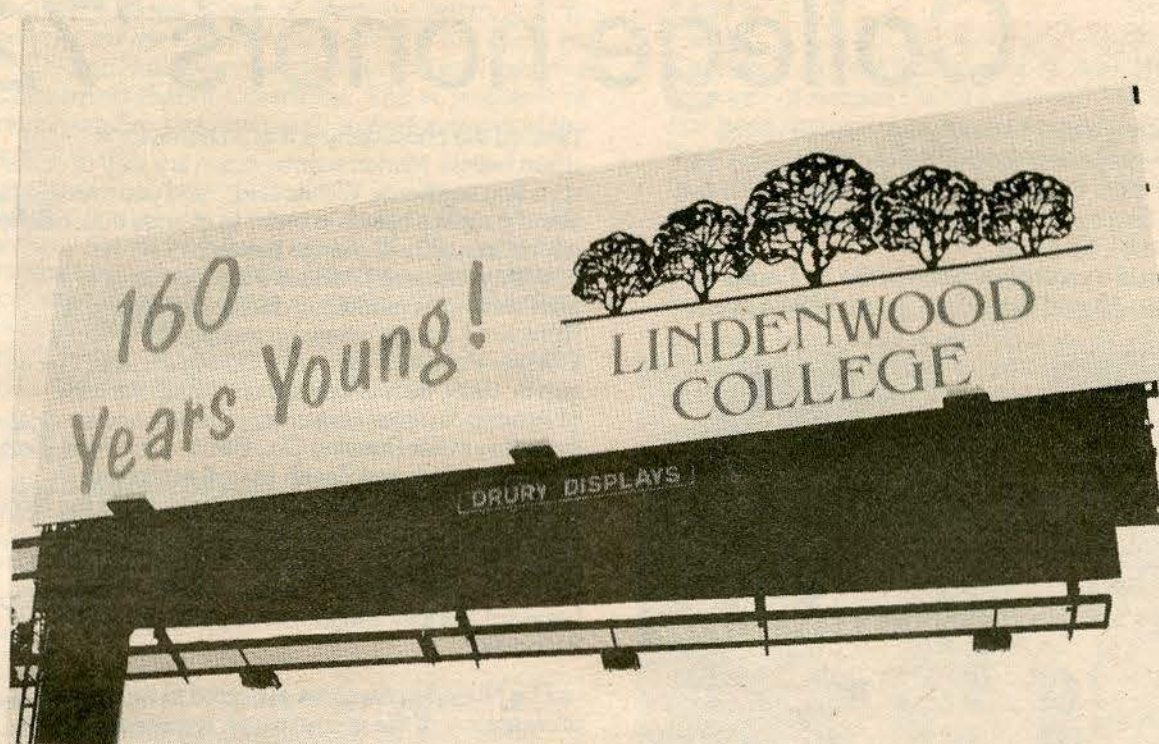
For the first time, Lindenwood has utilized outdoor advertising as part of its marketing program. The college contracted with Drury Displays of St. Louis to rent a 14x48-foot billboard at the St. Charles Rock Road exit of Interstate 170 for a two-month period this fall.

Produced in three colors, the billboard features Lindenwood's logo and its 160th anniversary theme, "160 Years Young." Rented at a well-traveled route between Clayton and St. Louis Lambert Airport, the billboard is exposed to more than 100,000 vehicles each day.

To supplement the Drury billboard, 18 smaller panels were contracted with Gateway Outdoor Advertising of St. Louis at locations near downtown St. Louis and areas in north and west St. Louis County. The panels, 6x12-foot in size, are designed to be placed low and close to the ground for greater visibility on secondary thoroughfares. A popular national medium, the smaller billboards are lower in cost for both production and rental.

Lindenwood's 18 billboard have an overall Daily Effective Circulation, known as DEC's in the trade, of 14.2 or 14,200 impressions made daily. The outdoor industry standard is 8.0 DEC's, or 8,000, so Lindenwood's locations were considered nearly 40 percent greater than the national average. The DEC's translate into an estimated 244,600 persons exposed to the 18 billboards each day.

Check your mailing label on page 1. If your address is incorrect, or if you're receiving more than one copy, contact the Public Relations Office, Lindenwood College, St. Charles, MO 63301, for a correction.



To supplement its print campaign, Lindenwood utilized KMOX-AM Radio, one of the country's leading CBS affiliates, to broadcast 60-second spots during September. The commercials, which cite the benefits of a Lindenwood education, were aired by KMOX-AM throughout the day and evening hours, including during live sports coverage of the St. Louis Baseball Cardinals and for the St. Louis Football Cardinals season opening game against the Dallas Cowboys.

Currently, the college is airing 60-second spots on KYKY-FM Radio, one of the metropolitan area's leading adult-contemporary stations. The spots, which run until the end of the year, represent the longest flight

Lindenwood has taken in the broadcast media. Geared toward adults, the spots cite Lindenwood's variety of programs, its convenient and accessible locations, its convenient payment plans to make education affordable and its outstanding alumni as proof of the value and quality of a Lindenwood education.

Coupled with the increased advertising program, our new and expanded college publications and promotional brochures, participation in community and special events like KETC-TV's annual fund-raising auction and recent Grand Opening Celebration of Mid Rivers Mall in St. Peters, and increased media and public relations efforts.

Publication is goal of EWI

In cooperation with more than 60 publishers of educational materials, Lindenwood College's Education Department has established the Education Writers Institute (EWI) to train educators to write for publication and profit.

"The purpose of the EWI is to train educators to transform their knowledge and ideas into publishable manuscripts or products, and to bring the completed works to the attention of appropriate publishers," said Nancy Polette, assistant professor of education and director of the newly-formed institute.

In addition to books and articles, other education formats can include instruction texts and workbooks, filmstrips, cassette tape scripts, transparency masters and computer programs.

The education market is one of the largest publishing industries in the country, and publishers constantly are seeking new and exciting products, said Polette, an

author herself with numerous articles and more than 20 books to her credit.

Instruction takes place during two 16-week semesters, and course work can be done through the mail. In cooperation with instructors, students will complete 15 lessons within this time period. An optional three-day writers workshop at the St. Charles campus also is part of the EWI.

"Included in this instruction will be what makes an outstanding product, the basics of writing for a commercial market, developing a writing style, how to analyze specific markets, how to query publishers and increase chances of being published, and how to avoid common mistakes in the free-lance market," Polette said.

At no additional cost to participants, Lindenwood College awards three semester hours of college credit for course completion.

Five receive Monticello awards

Five coeds at Lindenwood College are the recipients of \$2,000 scholarship awards from the Monticello College Foundation in Godfrey, IL.

Students are Karen S. Dinkins of St. Charles, Cynthia M. Foster of Hawk Point, MO, Cara M. Sutton of Fenton, MO, Melanie C. Smith of Griffith, IN, and Kathryn M. Wetzel of St. Louis.

One of the oldest independent institutions in the country, Monticello was founded in 1835, and it provided higher education for women until its dissolution in 1971. The Monticello Scholars Program was established by the Monticello Foundation to continue the memory of the former Godfrey-based college and to recognize outstanding female scholars.

Last year, five other Lindenwood coeds each received \$2,000 scholarship awards from the Monticello College Foundation, bringing its total contributions to \$20,000.

This year's recipients were nominated for the awards based upon their individual records of scholastic ability, leadership potential and involvement in extra-curricular activities in the school, church or community.

Dinkins is a junior majoring in elementary education. Foster, the daughter of Jimmy Don Foster of Hawk Point, is a freshman majoring in English. A sophomore majoring in elementary education, Sutton is the daughter of Mr. and Mrs. Michael Sutton of Fenton. With an undeclared major, Smith is a freshman and the daughter of Mr. & Mrs. Marvin E. Smith of Griffith. A freshman majoring in business administration, Wetzel is the daughter of Mr. & Mrs. Edward A. Wetzel of St. Louis.

Currently celebrating its 160th anniversary as an independent institution, Lindenwood, like Monticello College, began as a liberal arts school for young women, a position it held until 1969 when it became coeducational.



ALUMNI NEWS

College honors '72 alumna

"Advertising works to strengthen, alter or create beliefs to make people behave the way advertisers want them to," said Clayton E. Wilhite, chief executive/managing director of D'Arcy Masius Benton & Bowles, Inc. (DMB&B), St. Louis.

Speaking at a recent luncheon of the St. Louis Metropolitan Alumni Noonday Group, Wilhite ex-



FIRST RECIPIENT — Kathy Leonard of KSDK-TV receives the college's first Noonday Award from President James I. Spainhower for professional accomplishment in the broadcast profession.

plained the philosophy is that all behavior is based upon beliefs. Market segmentation is a way of understanding segments, Wilhite said, "and you must understand people's beliefs in order to change their beliefs which, in turn, will change behavior."

Wilhite became DMB&B's top executive in 1985 after serving as marketing director for Young & Rubicam-London where he managed the firm's Colgate-Palmolive business. During a career that began in 1969, he has worked on behalf of a wide variety of America's major consumer products and services, including Miller Brewing Co., BMW, Club Med, Sony, Kimberly-Clark and Zenith as well as Colgate.

His presentation followed the highlight of the Noonday Group's luncheon, its first presentation of the Noonday Award for professional accomplishment in the metropolitan area. The first recipient was Kathy Leonard, general assignment reporter for KSDK-TV in St. Louis.

The Noonday Award is expected to be an annual presentation of the group, which is composed of St. Louis area business professionals who are alumni of Lindenwood. Meeting several times annually, the Noonday Group promotes networking among its members and the St. Charles-based college.

As an active alumna of the college, Leonard was cited for her outstanding accomplishments in the broadcast profession in the metro area.

A 1972 graduate of Lindenwood, she has been with KSDK-TV's "Eyewitness News" team since 1981. After graduating from Lindenwood with a degree in broadcast communications, she joined CBS' KMOX-AM Radio as a reporter. She moved to KSD-FM Radio in 1973 and, in 1976, won the Missouri Broadcasters Association's First-Place Award for her special report on a "Stop Smoking Clinic."

Upon receiving the award, Leonard paid tribute to Lindenwood College and its community radio station, KCLC-FM, which she said provided her with opportunities in the broadcast profession.

As a Lindenwood student, Leonard worked as an on-air anchorperson and as news director of KCLC-FM. She was the first woman in Missouri to receive a First-Class License from the Federal Communications Commission, which she still has.

Nearly 40 Lindenwood alumni, friends and guests attended the fall luncheon, held at the Media Club in downtown St. Louis.

Metropolitan area alumni interested in finding out more about the Noonday Group are invited to contact the Lindenwood College Alumni office at (314) 949-2000, extension #319.

CLUB NEWS

ST. LOUIS CLUB - Members held a meeting this fall with a lunch at the Kirkwood home of Mary Ambler ('30), Lindenwood archivist. Keynote speaker was Jean Fields, associate professor of English and communications, who discussed "Maj. George Sibley and the Santa Fe Trail."

Club members also held a joint meeting in December with the St. Charles Club.

In conjunction with the Lindenwood Fashion Marketing Dept., the club's fifth Annual Fashion Show/Luncheon is scheduled February 20 at La Chateau in Frontenac.

On April 23, members will meet on campus for a breakfast with President James I. Spainhower.

For membership or club information, contact Nancy Prosser Dietz ('76) at (314) 878-3721 or call the Lindenwood Alumni Office at (314) 949-2000.

NOONDAY ALUMNI GROUP - Members heard a discussion on advertising and the American consumer by Clayton E. Wilhite of D'Arcy Masius Benton & Bowles of St. Louis (see adjacent story) when they met this fall at the Media Club. At the luncheon meeting, alumna Kathy Leonard of KSDK-TV was honored.

Earlier in the year, the group met at the Omni Hotel for a luncheon and discussion, "Linking the Metropolitan Area with Light Rail," presented by Sandra Kling, executive director of the Citizens for Modern Transit.

For membership or club information, contact Mike Wood at (314) 921-5525 or call the Lindenwood Alumni Office at (314) 949-2000.

KANSAS CITY CLUB - Members held a spring luncheon at the Victory Country Club, hosted by Judith Brougham ('60) of Kansas City, followed by a luncheon and board meeting at the residence of Francis Weeks ('40) of Leawood, KS.

Other recent activities included a reception for prospective Lindenwood students in the Kansas City metro area as well as for Presbyterian students at the Second Presbyterian Church in Kansas City, and a golf and swim picnic at Victory Country Club, hosted once again by Judith Brougham.

The club has two scholarship recipients enrolled at Lindenwood-Candy Myers and Lori Kaster.

ST. CHARLES CLUB - Club members held a potluck in September to honor "Mrs. Sibley's Attic Sale" scholarship recipients and their parents, and, in December, they held a joint dinner meeting with the St. Louis Alumni Club.

The group's fifth annual "Mrs. Sibley's Attic Sale" is scheduled June 4 on the Lindenwood College campus.

SOUTHERN CALIFORNIA CLUB - Club members met earlier this year at the residence of Corrine Paulson Needham ('40) of Escondido, CA. Ten college alumni were present at the gathering, including many from the San Diego area and Marilyn Bennett Noonan ('69), former president of the Lindenwood Alumni Association.

Members also held a buffet at the residence of Nancy Patterson Van Loenen ('39) of Mission Viejo, CA, and sponsored a meeting at the home of Leatha Cross Dean ('20) of Pacific Palisades, CA.

As a gift to the college, club members donated \$300 as a end-of-the-year contributions.

For membership or club information, write or call Arminta Harness ('49), 1633 Nelson Ave., Manhattan Beach, CA 90266, (213) 379-9353, or the Lindenwood Alumni Office at (314) 949-2000.

YOU ARE INVITED TO THE ST. LOUIS LINDENWOOD ALUMNI CLUB'S

Fifth Annual Fashion Show Luncheon

In cooperation with the Lindenwood Fashion Marketing Department

TIME: SATURDAY, FEBRUARY 20, 1988
11:15 a.m. Cash bar-Social Hour
12:30 p.m. Lunch
1:30 p.m. Fashion Show

PLACE: CHATEAU DE FRANCE
10405 Clayton Rd. (Frontenac)
St. Louis, Missouri, 63131

NARRATED BY: Lynn Moore, Director Fashion Marketing


MODELING BY: Alumnae, Faculty, Emeriti and Students

TICKETS: \$15 per person.
(Proceeds toward a scholarship for a Fashion Marketing Student)

FOR TICKET INFORMATION CALL:
Nancy Prosser Dietz ('76) 314/878-3721
or the Lindenwood Alumni Office
(314)949-2000 ext. 317

JOIN US AND BRING YOUR FRIENDS





ALUMNI

MARRIAGES

'85

Mary A. Graveman of St. Charles to **Stephen L. Barteau**, an employee of McDonnell Douglas Aircraft, May 29, 1987.

ALUMNI NEWS

'29

Katherine Perry Kaiser of Irvine, CA, wants classmates to know her address - 20 Foxglove Way, Irvine, CA 92715

'33

Velma Olsen reports she is moving from Sante Fe, NM, to Tucson, AZ.

'34

Jane Laughlin Denslow of Kirksville, MO, wrote her old friend, President Jim Spainhower, that she has entered the Twin Pines Nursing Home in Kirksville.

'37

Carolyn L. Hoffman Howard of Jackson, MO, is retired and does volunteer work as a dispatcher for the Jackson Police Dept. A year ago, she had completed 10,000 hours of volunteer work!

'39

Sue Sonneday Carson recalls that 1935 was the first time students could smoke in their rooms on campus. She remembers her advisor, Dr. Florence Schoper, who asked her as a prospective student, "What is education?" The reply was "a lack of prejudice", and Carson likes to think she has not disappointed him.

'41

Maxine L. Cooper Provost of New Canaan, CT, is the author of *What Kind of Bird Are You*, a book by Gladbrook Publishing Co. that features birds representing people by personality - the proud egotist, the worrier, the rebel and the dreamer to name a few. The 84-page, hardbound book, which mentions Lindenwood in the jacket copy, is priced at \$18.95 and is available this fall in bookstores. After Lindenwood, Provost graduated from Drake University and spent 20 years in communications before becoming an author and publisher.

'42

Marjorie Abeling of Inola, OK, recently wrote an article for the *Tulsa Sunday World* concerning Kathryn Linnemann who opened the St. Charles Public Library in the 1920's. Abeling worked for Linnemann following her graduation from Lindenwood.

'47

Jacelyn Foreman Martin of Pine Bluff, AR, reports the death of her husband, Steve, this past April.

'48

Willie M. Viertel Grissom of Terre Haute, IN, has been elected president-elect of the National Dance Association, a branch of the American Association of Health, Physical Education, Recreation & Dance. She has been a member of the Indiana State University faculty for 17 years.

'49

Martha J. Mathis McDaniel of Little Rock, AR, is program coordinator of Patient Care Volunteers (PVC), a group of retired volunteers who provide information, moral support and assistance to older patients and their care-givers following hospital discharge. PVC is affiliated with the American Association of Retired Persons.

'58

Nan Nordyke Buhlinger of Bartlesville, OK, is director of the annual Mozart International Festival, an annual event that has gained national critical acclaim and recently a \$10,000 Arts Challenge Grant from the Phillips Petroleum Foundation.

Carol A. Kellogg Stoub of Western Springs, IL, has been named the "Woman Contractor of the Year" by the Chicago Builders Association at its recent Pride and Achievement Award Ceremony. She is president of Triad Form Erectors and newly elected member of the Alumni Board.

'62

Barbara Siems McKinney of Albany, NY, visited the Lindenwood campus this summer. She recently received a degree in home economics from the State University of New York.

Judith Cutler of Grimes, IA, has been ill for several years, and now resides in a nursing home.

'71

Carla Campbell Coleman of Pompano Beach, FL, is a senior research associate with Florida Atlantic and Florida International Universities. She also is a lobbyist for the Joint Center for Environmental & Urban Problems.

'73

Eva Emory of St. Charles, former registrar at Lindenwood, reports the death of her husband, Forest.

Mark Poindexter of Mt. Pleasant, MI, completed his Ph.D in speech-communications at the University of Minnesota and begins teaching this fall on the faculty at Central Michigan University.

'74

Mary Lou Peters of Augusta, MO, was one of the judges of the Youth Queen contest as part of the county fair in Troy, MO, this summer, sponsored by the Troy Chamber of Commerce. A registered nurse, she recently opened a bed-and-breakfast establishment in Augusta near the bluffs of the Mississippi River, and she invites Lindenwood alumni to visit her if they're in the area. She named her establishment Lindenhof.

Linda Schwartzenbert Bedell and **Raymond Bedess** have moved to Raleigh, NC. She is a free-lance writer and editor while he is controller and general manager of the Olive Co.

Tommy Buell Rupinski of New York City received a master's degree in professional studies in interactive telecommunications this spring from New York University.

'76

Lynn Jeffery Lucher of Bloomington, IL, teaches microbiology at Illinois State University.

'77

Deborah Thomas of Tallahassee, FL, has started her own business as a free-lance photographer.

Frank Oberle of St. Charles, has started his own firm, Photography Resources, a St. Louis company that stocks photographs and markets them repeatedly, thereby producing added income for photographers.

'78

Deborah Schneider of St. Louis is division manager of Famous-Barr Co. in St. Peters, MO.

Renee Dieckmann Belk of St. Louis reports that she is working on her master's degree and that she enjoys being informed about what is happening "at my favorite college."

Nancy L. Schneider of St. Charles has become a principal and stockholder in the St. Charles law firm, Hazelwood, Barklage & Barklage, P.C.A. A member of the firm since 1983, she holds a B.A. degree from Lindenwood and a juris doctor degree, granted cum laude in 1981, from St. Louis University School of Law.

'79

Robert D. Alton of St. Charles has been named Vice-President of the Central Region Telephone Operations, for Contel Corp. Alton, who joined Contel in 1970, has served as the Central Region's vice-president of finance since 1982. In his new position, he will be responsible for telephone operations in Arkansas, Illinois, Indiana, Iowa, Kansas, Minnesota, Missouri, North Dakota and South Dakota. A graduate of Iowa State University, he holds a M.S. degree from Lindenwood.

'82

Cynthia Z. Zvanut Schipper of St. Ann, MO, account manager at Aragon Public Relations, Inc. in Clayton, has been appointed to the Advertising & Public Relations Committee of the Mortgage Bankers Association of America, a Washington, DC-based national association of mortgage banks.

'83

Florence Barboro of St. Louis, recently received her second Golden Poet Award from the Work Society of Poetry. Many of her poems are published in the *Work of Poetry Anthology*.

'85

Susan C. Gibson of St. Charles has been appointed communications specialist for Schnucks Markets, Inc., of St. Louis. Gibson, who joined Schnucks following graduation, will serve as liaison between the super-market firm and the media.

'86

Earl G. Austin, Jr., of Florissant, MO, is a free-lance sports writer who does volunteer work on the communications team of the United Way of Greater St. Louis. An article written by him appears in this fall's United Way media kit.

'87

Denise K. Holzhauser of Wentzville, MO, recently traveled to Australia with an educational group from Kansas State University. This fall she begins teaching at the middle school in Montgomery City, MO.

DEATHS

'11

Marguerite Guy Root of Chevy Chase, MD, June 15, 1987

'18

Daphne Wilson Albach of Wayne, PA, May 23, 1979

'26

Dorothy Gee Aspelmier of Rockville, MD, Feb. 16, 1986

'29

Ida Perry Danke of Carlsbad, CA, Jan. 15, 1987

'32

Vivian Fairfield Taylor of Yukon, OK, March 31, 1987

'33

Mary Chowning of Madison, MO, July, 1985

'36

Guinevere Wood Jones of Fort Lauderdale, FL, June 22, 1987

'42

Carol Davenport Ford of Orlando, FL, Jan. 17, 1987

'44

Mildred Fuson Slusher of Sarasota, FL, May 29, 1987

'45

Minota Bayliss Moncure of Alexandria, VA, June 8, 1987

'48

Margaret Gamssle Ellis of Monument, CO, March, 1982

'82

Lon Cicotte of Florissant, MO 1984



by RANDY L. WALLICK, Editor

Easton descendent traces roots to Lindenwood

"I almost can feel her spirit and part of the history that lies beneath this ground," said Robert Easton as he stood at the grave of his great-great-grand aunt, Mary Easton Sibley, at Founder's Cemetery on the main campus.

A veteran Hollywood character actor, Easton made his first visit to St. Charles and the Lindenwood cemetery during his attendance this summer at the St. Louis convention of the National Academy of Television Arts & Sciences.

His two-day visit continues years of research into the genealogy of the Easton family, said the 57-year-old actor who admitted he was proud of being an 11th generation American, directly descended from three of the original founders of Hartford, CT, in 1636. Easton's visit to St. Charles centered upon the Lindenwood College Archives, historic Sibley Hall and Founder's Cemetery.

The small cemetery on the campus contains 20 graves, 17 of which date before 1880. Two contain those of Maj. Goege and Mary Easton Sibley, founders of the college in 1827. Two others contain Mary Easton's parents, Rufus and Alby Abial Easton, Robert Easton's great-great grandparents.

A giant of a man, 6'7", with a rusty-white beard like Father Christmas and long, reddish hair, Robert Easton has accumulated more than 40 years in show business as a Hollywood character actor and a renowned dialect expert whose slogan reads, "The Dialect Doctor - Accents Cured, Dialects Strengthened."

Born in Milwaukee and raised in Texas, Easton is a veteran of show business who in recent years has made his mouth his livelihood in Hollywood and some 50 countries around the world. In recent years, he has taught British actors to speak as if they were born in Louisiana, and he has taught Americans to speak as if they were descended from noted nobility. He has coached the likes of Gregory Peck, Sir Laurence Olivier, Charlton Heston, Jane Fonda, Ann-Margaret, Al Pacino, Robert Duvall and literally hundreds more who have been taught his expertise.

It is hard to believe that the man with a thousand tongues, as he is referred to sometimes, once had a speech impediment. As a child, Easton said he talked with such a severe stammer that people used to ask his mother what language he was speaking. Because of this, he taught himself to slow down, collect his thoughts and enunciate his words.

"I became so successful at this self-instruction that I won a place on the 'Quiz Kids' at age 14," he said. The "Quiz Kids", recently written about in *People* magazine, was a 1940's radio show that featured ultra-intelligent teen-agers who were quizzed by a panel of professors. During World War II, the "Quiz Kids" toured the country, selling millions of dollars worth of War bonds. As a result, Easton and the others were invited to the White House as the guests of President Harry S. Truman and later were introduced from the floor of the U.S. Senate, an honor usually reserved for military heroes and foreign dignitaries.

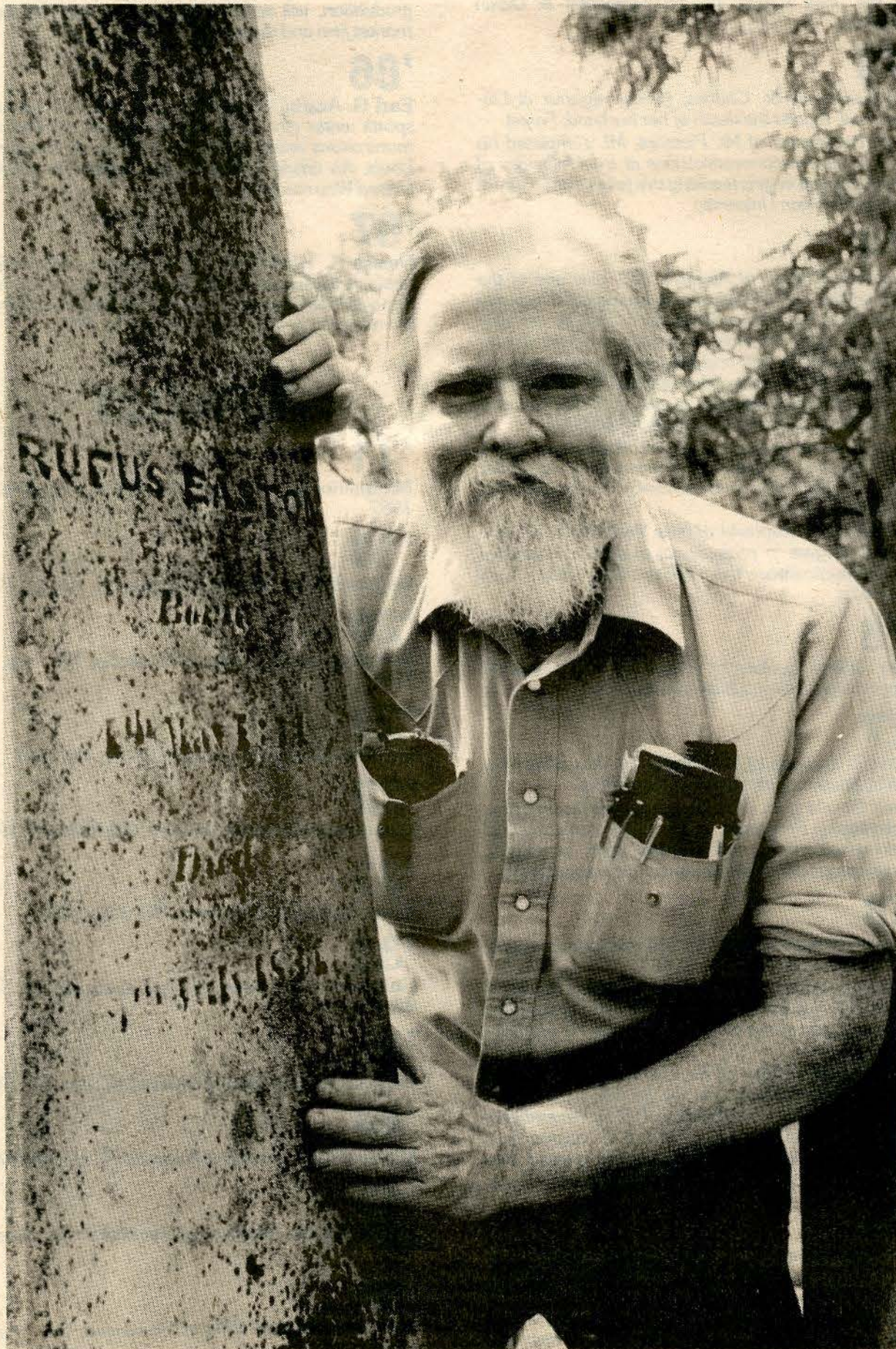
While traveling the country as a member of the "Quiz Kids" show, he became interested in American dialects and began to imitate them. Easton also developed a strong penchant for acting, which led him to write, direct and perform on radio while in high school.

After graduating from a San Antonio high school, he entered the University of Texas to study acting. Because of exceptional performance on entrance exams, Easton was allowed, by special permission of the dean, to take freshman, sophomore, junior and senior courses concurrently.

He abandoned college a year later at the age of 18 to try his luck in Hollywood and to attend the NBC-UCLA Radio Institute. Within a short time his career became firmly established, paving the way to more than 600 professional appearances on radio, 800 on television and 60 major motion pictures.

Radio buffs may recall more than 100 shows he did as the next-door neighbor of "Fibber McGee and Molly," as well as recurring roles on "Our Miss Brooks" with Eve Arden and on the "Halls of Ivy" with Mr. and Mrs. Ronald Colman.

In the early days of television, Easton is perhaps best remembered for starring roles on "Cavalcade of American," "Navy Log," and as Chester's inept brother on "Gunsmoke". His slow Texas drawl and towering size helped him capture other frontiersmen roles on "Wagon Train," "Death Valley Days," "Annie Oakley," "Johnny Ringo" and "Rawhide." In radio, he rode the range with "Roy Rogers," "The Cisco Kid" and "Gene Autry."



Robert Easton at his great-great grandfather's grave



Easton also has created a list of zany characters on such top comedy shows as "Jack Benny," "Red Skelton," "Milton Berle," "Bob Hope," "Father Knows Best," "The Life of Riley," "December Bride," "George Gobel" and "Ray Bolger," to name a few. Early television viewers also may recall his roles as Ronnie Burns' dim-witted college buddy on the "Burns and Allen Show" and Nancy Kulp's bashful bird-watcher boyfriend on the "Bob Cummings Show."

Although Easton admitted that comedy is his strong point, he modestly acknowledged dramatic appearances in such radio shows as "Suspense," "Family Theatre," and "Inheritance," and in such "Golden Age" television dramas as "Playhouse 90," "Hallmark Hall of Fame," "Climax," "Screen Director's Playhouse," "Schiltz Playhouse of Stars" and "Ford Theatre."

His motion picture credits range from John Houston's "The Red Badge of Courage" and Robert Wise's "Somebody Up There Likes Me" to Tony Richardson's "The Loved One" and John Logan's "Paint Your Wagon."

"I've played my share of parts," Easton said, "but there was a time when they all appeared to be only a slight variation of each other. I was typecast as the perennial bumpkin, and I've played a succession of half-witted hayseeds, lovesick louts, shiftless sharecroppers, dopey deputies or courtly country cousins. I wanted to break the mold, so I went to England in 1961, and I became fascinated with the variety of English accents. I decided to start studying phonetics at University College in London," he said.

After 12 busy years in Hollywood, Easton and his wife, June, returned to her native England for what he calls, "a short holiday." Both liked England so much that their "short holiday" stretched into three years, during which Easton worked for British Broadcasting Co. both as an actor and a writer, did 42 British television shows and took part in motion pictures both in England and on the continent.

In the past 20 years or so he has established himself on the West Coast through word of mouth and an occasional talk-show appearance, including six times on the "Tonight Show" with Johnny Carson, two with Mike Douglas and one with Merv Griffin. Originally, his clients were sent by directors; today, a number of famous personalities call upon Easton on their own without waiting to be sent. His clients have included Al Pacino in "Scarface," Jane Fonda in "The Dollmaker," Charlton Heston in "The Mother Lode," Sir John Gielgud for "Invitation to the Wedding," Sir Laurence Olivier in "The Betsy," Ann-Margaret in "The Cheap Detective," Lee Remick in "Ike," and Gregory Peck in "The Boys from Brazil."

Others include Steve Allen, Raymond Burr, Richard Chamberlain, James Coburn, Robert Conrad, Robert De Niro, Robert Duvall, Peter Falk, Louise Fletcher, Linda Gray, Gene Hackman, Margot Kidder, Cloris Leachman, Karl Malden, Mary Tyler Moore, John Ritter, Arnold Schwarzenegger, Jaclyn Smith, Sissy Spacek, Donald Sutherland, Cicely Tyson, Robert Vaughn, Robert Wagner, Flip Wilson, Jane Wyman, Michael York and Susannah York.

Many of his coaching assignments have resulted in Emmy awards or Oscar nominations for his clients. Altogether, he has taught more than 2,000 actors and actresses as well as attorneys, professionals, physicians and others who have had diction or voice production problems, or who have just wanted to improve their communication skills.

On a given day, Easton might be found easternizing a Californian sound, deemphasizing the cultured finishing-school tones of an actress about to star in a western, teaching an American-born Oriental the cadence of Hong Kong natives, or working on a single film project in which a dozen different dialects are involved.

Easton's time is spent either at his 24-room mansion in Pasadena, CA, or on movie sets in various locales throughout the world. Each of the rooms in the home he shares with June - "he married me for my accent" - is like a neighborhood library. Four rooms are devoted to libraries, while many others are lined with books, plays, poetry notes and articles - some 60,000 of them dealing with diction, dialects, linguistics, semantics, folk humor and speech, culture, anthropology and



Historic Founder's Cemetery

Lindenwood visitors often are surprised to find a small cemetery situated beneath the trees on a grassy knoll overlooking the stadium. And, with the exception of the graves of college founders Maj. George C. and Mary Easton Sibley, little is known about those buried in the other plots.

Set apart from the main campus, the cemetery was proposed by the Sibleys in 1853 when ownership of the Linden Wood Female College transferred to the auspices of the Presbyterian Church. Plans by the Sibleys called for a site, about one-fourth of an acre in size, to be used for the Easton and Sibley burial sites. This parcel now contains 20 graves, 17 of which date from before 1880.

In a section of this land is found the Sibley-Easton plot, the larger of two fenced areas, which contains the graves of Mary and George Sibley.

Buried near the Sibleys are Mary's parents, Rufus and Alby Abial Easton; a brother of Mary Sibley, Langdon C. Easton; a daughter and daughter-in-law of Rufus and Alby, Russella E. Anderson and Mary B. Easton, respectively; and three grandchildren of Rufus and Alby, Thomas L. Anderson, Louisa Gamble Easton and Rufus Easton.

geography. An article a few years ago in the *Saturday Evening Post* once said, "Robert Easton's private library is more complete than USC, UCLA and the Los Angeles public libraries combined."

Easton also has done work for the Los Angeles Police Dept. as a volunteer consultant on cases where voice recordings are involved, ranging from murder to terrorism. A former University of Southern California instructor and frequent lecturer at college and university campuses throughout the country, he has served on the national boards of the Screen Actors Guild and the American Federation of Television and Radio Artists.

The basis of Easton's success is his penchant for prodigious researching, as evidenced on his visit to Lindenwood. Armed with a shirt pocket full of pens and a notepad, he frequently was scribbling away notes during his Lindenwood visit, which included several hours of research in the College Archives. It was in the

Mary Sibley was the oldest of 11 children born to Rufus and Alby Easton, who came to St. Louis in 1805 when Rufus was appointed a territorial judge and the first postmaster of St. Louis by President Thomas Jefferson. In 1814, Easton was elected to a four-year term as a delegate to Congress from the Louisiana Territory. When the state government was organized, Easton probably moved his family to St. Charles following his appointment in 1821 as Attorney General, Missouri's second.

Born in Great Barrington, MA, in 1772, George Sibley came to St. Louis in 1805 following his appointment to the Indian Dept. by President Jefferson. Three years later, he was commissioned to help establish Fort Osage on the Missouri River. It was here, 300 miles from the nearest white settlement, that he brought his 15-year-old bride, Mary Easton.

Fort Osage was closed in 1822 along with other government trading posts, but Sibley remained as postmaster until 1825. It was in that year that his wife returned to St. Louis when George and two other men received a presidential appointment to mark a road from western Missouri to New Mexico, a route that would take two years to complete and which would later become known as the Santa Fe Trail.

archives that Easton found much about his family, including correspondence from his mother and grandmother, an unknown Easton relative and numerous clippings and documents about Maj. George and Mary Easton Sibley.

Standing at Mary's grave, he broke into tears as he remarked how he would have liked to have known "such a remarkable woman" who was so far-thinking in her day and time.

Upon leaving the campus, Easton paused to reflect upon his visit. "This is a beautiful campus, something you don't find in California," he said. "But, what is more impressive is the friendliness of this campus and of those I have met today here and in St. Charles. You have a unique, warm and beautiful college, something my ancestors would have been proud of," he added.

It is apparent Robert Easton is related to Rufus and Mary Easton for he shares the vision they did more than 150 years ago.

Donor Honor Roll

Gifts received from July 1, 1986, to June 30, 1987

BUSINESSES & ORGANIZATIONS

Renaissance Association

\$10,000 or more

Anheuser-Busch Charitable Trust
Allen P. and Josephine Green Foundation
Boatmen's Bancshares
Brown Group
Emerson Electric Foundation
Latzer-Schott Fund of the St. Louis Community Foundation
May Stores Foundation
McDonnell Douglas Foundation
Monsanto Fund
Monticello College Foundation
Norman J. Stupp Foundation
Southwestern Bell Foundation

Sibley Association

\$5,000-\$9,999.99

American Society of Appraisers
Arts and Education Council
AT&T
Clifford W. Gaylord Foundation
Compton Foundation
Interco
Keystone Appraisers Co.
Mercantile Bancorporation, Inc.
MCI Telecommunications
Sidney and Sylvia Souers Charitable Trust
St. Charles Kiwanis (Noonday) Club
Synods of Mid-America Presbyterian Church
Union Electric

Corporate Sponsors

\$2,000-\$4,999.99

AT&T of St. Louis
Baue Funeral Homes
CBS, Inc.
Corroon and Black of St. Louis
Commerce Bankshares, Inc.
Contel
Mary Ranken & Ettie A. Jordan Charitable Foundation

Kaplan Real Estate Company
Kurtz Concrete & St. Charles Quarry
Laclede Gas
Mallinckrodt Fund
Slay Industries, Inc.

Board of Associates

\$1,200-\$1,999.99

Bankers Life
Beaumont Graphics, Ltd.
Chrysler
Claywest House
D'Arcy Masius Benton & Bowles
Jim Meagher Chevrolet
Lang & Smith Communications Group
Mercantile Bank of St. Charles
Pundmann Motor Company
R. E. Harshaw, Jr. Foundation
Scholin Brothers Printing
Sears-Roebuck Foundation
St. Charles Memorial Gardens
Two / Ten Charity Trust, Inc.
Williams Litho Service

President's Club

\$500-\$1,199.99

ACF Foundation, Inc.
Anonymous Donor
Cahokia Memorial Unit 784
Carter Family Foundation
ConAgra
Deloitte Haskins & Sells
Direct Mail Corporation
Economy Federal Savings
Enterprise Leasing
Fabick Tractor Company
Finnigan Electronics
First State Bank
Fleishman Hillard
Fru-Con Corporation
Grey Eagle Distributors
Hardesty-Johnson Realty
Harry Edison Foundation
Industrial Development Company
J.C. Penney Company
Krey Distributing Company
KSDK-TV and Multimedia Incorporated
Lindenwood Athletic Fund Committee
Maritz
McBride & Sons
Meyer Real Estate Company
Morton Miller Real Estate
Muller-Jordan-Weiss
People's Bank of Bridgeport
Pickett, Ray, and Silver
Pulitzer Publishing Company
Rauch Lumber Company
Sayers Communication Group
Schaefer Insurance Services
Simpkins Oil Development
Soil Consultants, Inc.

St. Charles County Board of Realtors
St. Charles Gas Company
St. Charles Rotary Club
St. Charles Metal Finishing
St. Peters Hospital
Standard Drug Stores
Taylor Morley Simon, Inc.
Thro's and Michelle's
Universal Sewing Supply
Young Sales Corporation

Gold Links Club

\$300-\$499.99

American Scientific Products
Anonymous Donor
Associates of the Fine Arts
Hoffmann Insurance
Mary Frances Dunlop Trust
Midwestern Safety Equipment
Millstone Foundation
Missouri Cities Water Company
Missouri Colleges Fund
Monsanto Company-St. Peters
Optimist Club of Ritenour
Scottish Rite Foundation of Missouri
St. Charles Brick Company
St. Charles Golf Course
Transamerica Corporation

Founder's Club

\$160-\$299.99

Bankcenter One
Barnes Hospital
Bax Engineering
Center Bank-St. Peters
Coldwell Banker
Community Federal Savings
Didion & Sons Foundry
Dierbergs Markets, Inc.
Dun & Bradstreet Corp. Foundation
E. F. Hutton
First Presbyterian Church-Bowling Green
Employees of General Motors, C-P-C Tarrytown Plant
KMOV-TV
Missouri Research Labs
Missouri State Bank & Trust Company
Mutual Fire Insurance Company
Nooter Corp.
Pio's Inc.
Schmidt Brick and Stone
St. Charles Jaycees
St. Charles Journal
Thompson & Mitchell

Century Club

\$100-\$159.99

3M Foundation
Airwick Industries
The American Association for the Surgery of Trauma
The Bank of St. Charles County
Batz-Hodgson-Neuwoehner, Inc.
Bob Downes Chrysler
Boonslick Medical Group
Chapter Lr., PEO Sisterhood
Covilli-Sasso Supper Club
Cundiff, Turken & Londoff
David Sherman Foundation
Fee Fee Baptist Church
Goellner Printing, Inc.
Grace Church United-O Fallon
Hackmann Lumber Company
Interfaith Council of Columbia
J.R. Mentel & Associates, Inc.
Jerry Kelly Heating & Air Conditioning
Leonard's Metal
Lockwood Group
Love Real Estate Company
Mega Bank of St. Charles

Moog Automotive
Paragon Group
Purler-Cannon-Schulte, Inc.
Rauch Truck Lines, Inc.
St. Charles Anesthesia Group
St. Charles Foreign Car
St. Charles Insurance Agency
St. Charles Mid-Towne IGA
St. Charles Optical
St. Charles Optimist Club
St. Charles Transit Company
State Farm Insurance
Sweeney Corporation
Temple Israel
Thoele Oil Company
Thoma Paving Company
Valle High School
Vista Host
Vitaco of St. Louis
Westover-Graham, Inc.

Contributors

\$99.99 or less

Academy of the Scared Heart
Accounting/Tax Service
Baue Bowling Team
Botz, Goerss, and Co.
Community Title Co.
Computer Central Corp.
Computer Dynamics, Inc.
Curry, Lenhardt & Co.
Daughters of American Revolution
DeMonbrun & Alexander, Inc.
Equitable Life
First Presbyterian Church of Kirkwood
Friends of Lakeside, Inc.
Gilliom Manufacturing Co.
Hamilton, Babka, Ltd.
Harry M. Automotive
HCA Foundation
Insurance Exchange, Inc.
International Data Corp.
Kroger Co.
Lindley Funeral Homes
LPL Technical Service
Moellering Concrete, Inc.
Owen Companies
Paddock Cars, Inc.
Pals Financial Group
Paris Cleaners
Popular Bluff School District
Preston Bank & Associates
Preston Furniture, Inc.
Ryder System, Inc.
S & M Food Service
St. Charles City Ban'AI
St. Charles Theatre Guild
St. Charles Data Processing
St. Peter's Church
Stegton Banquet Centers
Veterans Committee of St. Charles
Witte Brothers Exchange
L. K. Wood Realty Co.

SIBLEY ASSOCIATES

\$5,000-\$9,999.99

Miss Mary Ambler
Durine Riddle Gore
Nancy Kern Peteler

RENAISSANCE PATRONS

\$2,000-\$4,999.99

Patricia Price Bailey
Judith Lee Batton Brougham
Ms. Florence Crockett
Sara Willis English
Patricia A. Hyland
Ms. Gerry Jacobs
Susan Good Keohane
Eleanor Eldredge McClevey
Virginia Foristell Otfofy
Janet Lewis Riddle
Ms. Linda Ross
Miss Dorothy Trump
Carin Chapman West

BOARD OF ASSOCIATES

\$1,200-\$1,999.99

Thomas Bakewell
Wilhelmina Steinbeck Barton
Mary Jane Brittin Bell
Miss Lydia Dodge
Elaine Anderson Fellowes
Lucette Stumberg Flanagan
Barbara Ringer Hamill
Margaret Ringer Howell
Fritzie Knoblauch
Elizabeth Ann Weatherwax Peterson
Elizabeth Mudd Rauch
Nell Quinlan Reed
Mr. Randall & Mrs. Cynthia Robertson
Marian Johnson Sprague
Mr. James & Mrs. Pamela Thompson
Shirley Wipfler

ALUMNI

RENAISSANCE ASSOCIATES

\$10,000 or more

Estate of Miss Aimee Becker
Estate of Mrs. Ruth Gladys Campbell Billings
Miss Marian Greene
Margaret Hoover Ketcham
Sarah Greer Mayer
Maurita Estes Stueck
Dorothy DuQuoin Warner

PRESIDENT'S CLUB

\$500-\$1,199.99

Barbara Nall Anderson
Rosemary Dysart Baue
Beverly Mayhall Baumunk
Bonner McFarland Bentley
Mary Lou Bilsborough
Judith Neff Bois
Susan Taylor Brown
Mary Ann Todsens Carter
Genola Bellrose Cox
Doris Force Crowley
June Tavlin Dean
Patricia Lloyd Deisenroth
Mrs. E. Mildred Clarke Denning
Nancy Prosser Dietz
Miss Ruth Dolan
Ms. Esther Fenning
Dixie Smith Ferry
Jackie Fish Fieseler



Donor Honor Roll

Gifts received from July 1, 1986, to June 30, 1987

PRESIDENT'S CLUB

\$500-\$1,199.99

Gerald Gayer
 Gloria McCarrick Gouger
 Elizabeth Burbank Hamrick
 Judy Ross Hoefler
 Lenore Schierding Horn
 Miss Mary Jackson
 Mary Jardine Keith
 Helen Chesbrough Kinell
 Ms. Sally Goldenberg Landau
 Patsy Payne Lea
 Mrs. Yu Chen Lin
 Lindenwood College Alumni Club—Kansas City
 Ms. Rita Luddon
 Dr. Daniel Maddox
 Ruth Magee
 Helen Crider Marshall
 Virginia Carter McGaughey
 Virginia Hoover McGuire
 Margaret Keisling Morgan
 Carol Wideman Mueller
 Martha Denious Muncy
 Nancy Montgomery Orr
 Anne Hodges Pals
 Nancy Mueller Pecha
 Doris Banta Pree
 Glenda Raef Schaefer
 Miss Mary Ann Smith
 Miss Virginia Sodemann
 Roberta Walters Sprich
 Janet Schaefer Strauss
 Peggy Lynn Walter Symes
 Helen DuHadway Thatcher
 Linda Hunt Thom
 Joyce Burge Waters
 Helen Weber Whalen
 Mary Merrill Wolfe
 Miss Mary Wolfert
 Jeannette Lee Wood
 Michael Wood

GOLD LINKS CLUB

\$300-\$499.99

Dr. Berte Baker
 Mary Beaman
 Ms. Opal Beul
 Mary Lou Blocher Billsborough
 Mrs. Beryl Wade Blunn
 Mr. & Mrs. Charles Boswell
 Dorothy Emmons Canty
 Miss Melba Carty
 Ginny Wolf Chivas
 Ms. Karen Prewitt Clarke
 Frank Clayton
 Elaine Ludy Close
 Miss Mary Collier
 Elizabeth Vance Conrad
 Mary Jean DuHadway Craig
 Cornelia Darnall
 Prudence Porter Drummond
 Cora Lee Critchfield Gilliland
 Joanne Buck Goudie
 Ms. Betty Breck Haas
 Ms. Patricia Hannon
 Marilyn Mangum Hellman
 Doris Weiss Hirschmann
 Stephen Hoelscher
 Karen McFarlane Holtkamp
 David Hoover
 L. Audrey McNulty Jennings
 Edith Mullins Johnston
 Helen Rose Bruns Jolly
 Marian Pendarvis Keehn
 Margaret Laughlin Kelly
 Ronald Lawler
 Lindenwood College Alumni Club—Southern California
 Ann Adams Long
 Robert Maruska
 Mrs. Merlyn Merx Michael
 Joseph Miller
 Dorothy Gehlbach Ordelheide
 Katharine Tinsman Patton
 Ms. Jean Poggemeier
 Mr. Michael and Mrs. Peggy Porter
 Edna Mary Jacobson Richardson
 Ann Ritter
 Hershel Sams
 Ms. Anne Schaefer
 Martha Disharoon Smith

Ms. Sandra Caldwell Sorensen
 Marie Blaske Spencer
 Lucille Dillingham Stewart
 Donald Tabone
 Virginia Morsey Talley
 Rosemary Williams Thomas
 Janice Rollins Vassar
 Doris Province Watts
 Jeanine Butts Webster
 Miss Deborah Wittner
 Evelyn Knippenberg Zierenberg

FOUNDER'S CLUB

\$160-\$299.99

Ms. Jane Knudson Abernathy
 Mary Williams Adams
 Karen Rasmussen Allredge
 Bradley Anderson
 Virginia Frye Anderson
 Lonnie Baldwin
 Constance Gordon Balfrey
 Alma Fleck Bergmann
 Frances Burgeson Bogen
 Miss Nancy Bowser
 Miss Evelyn Bradley
 Genelle Phillips Branney
 Dorothy Simons Buchanan
 Miss Margaret Buford
 Miss Elizabeth Burdick
 Dorothy Rhea Burnett
 Josephine Peck Calkin
 Miss Nancy Calvert
 Mary Alice Lillard Carmichael
 Ms. Mary Ann Herlitz Chevoor
 Miss Jean L. Christensen
 Lalla Vaner Clagett
 Helen Diehr Coldwater
 Betty Cole-Dukert
 Daryl Crawford
 Linda Janson Dahlsgaard
 Mary Lee Campbell Davis
 Ms. Ann Brewster Dobie
 John Dooley
 Nancy Stark Dosman
 Mrs. Johnnie Lou Brown Dugger
 Ms. Ellen Duehlmeier
 Ms. Lynn Bartels Eggering
 Loise Ulen Elrod
 Ms. Cynthia Essenpreis
 Helen Sempres Estes
 Constance Levy Finney
 Laverne Kieninger Flachsbar
 Genevieve Horswell Frank
 Ruth Neef Fredericks
 Barry Freese
 Julia Thomson Gallais
 Thomas Glosier
 Jill Simmons Graff
 Margaret Stahl Greer
 Paul Gross
 Ms. Arminta Harness
 Dr. Anna Harrison
 Ms. Ann Fieber Hays
 Sarah Davis Hedgecock
 Miss Barbara Hedlund
 Constance Fuqua Hill
 James Hodges
 Ann Hamilton Hostetler
 Elizabeth Glebe Houchin
 Ms. Donna Milnes Houchins
 Margaret Howells Howland
 Mary Green Hudwalker
 Frances Bradenburg Hume
 Marietta Hansen Hunsche
 Ann Riker Jaltuch
 Jean Graham Johnson
 Marilyn Berryman Johnston
 Jeanette Hester Jolly
 Sara Shomberg Kearns
 Mary Ferrell Keller
 Miss Juliann Kelley
 Betty White Klee
 Mr. Jan & Mrs. Janet Kniffen
 Ms. Ann Kroeger
 Kraig Kurtz
 Mary Lals
 Janice Blevins Lange
 Mary Farthing Langenfeld
 Barbara Plackemeier Lash
 Ruth Titus Lasswell
 Effie Holley Laub
 Ms. Maryann Lee
 Helen Sherwin Lesvesque
 Owen Davis Lewis
 Janet Bergelin Little
 Phillip Lucido
 Ms. Virginia Lupfer
 Chloe Willson Machado
 Miss Nancy Madden
 Ernestine Thro Magner
 Eleanor Petty May
 Lois Deisenroth May
 Katherine Pfeiffer McCombe
 Beth McHaney
 Miss Thursa J. Merritt
 Muriel Jacobson Mersereau
 Miss Mary Miller
 Kathleen LaBounty Mitchell
 Aline Lindquist Mohr

Nancy Jane Wallace Mojonier
 Georgia Lee Reed Mon
 Mary Helen Morrow-Fuhrer
 John Muench
 Betsy Severson Nimock
 Rosemary Kuncel Northwall
 Lorraine Robie O'Connor
 Miss Yuko Okuda
 Rosalyn Fields Patterson
 Miss J. Kristin Peterson
 Miss Ruth Pinnell
 Jean Paulson Plotz
 Mary Lou Gillette Powers
 Melinda Green Powers
 Miss Patti Price
 Vivian Brubaker Priddy
 Miss Betty Proctor
 Irene Kern Ray
 Mary Frances Wertz Rea
 Judith Prowse Reid
 Margaret Meyers Richeson
 Joyce Shoemaker Riley
 Marie Christensen Robb
 Jane Calvert Rogers
 Barbara Manbeck Rugtly
 Larry Sackman
 Carol Fitz Roy Saum
 Elizabeth Tracy Schreiber
 Mary Goodwin Scott
 Jane Passage Scowcroft
 J. Marguerite Little Shewman
 Margorie Sumner Silliman
 Margaret Hocker Small
 June Spillman
 Jeri Herhold Stine
 Carol Kellogg Stoub
 Sara Crews Street
 Joyce Davis Striegel
 Cordelia Buck Stumberg
 Linda Shaw Sullivan
 James Sutterer
 Martha Sweeney
 Ms. Virginia Terry
 Ms. Geraldine Thompson
 Christine McDonald Todd
 Charlotte Williams Tower
 Betty Schoen Trail
 Miss Susan Trail
 Miss Patricia Trampe
 Patricia Mulligan Trenkle
 Helen Hook Valnikos
 Dorothy McClintock Von Hoffman
 Berenice Boyd Wallace
 Glenda Gerred Watts
 Margaret Wilson Wesson
 Camille McFadden Whitney
 Miss Deborah Wittner
 Martha Skaer Wright
 Ms. Lyn Zanville

CENTURY CLUB

\$100-\$159.99

Margaret Funk Aden
 Helen Stants Alexander
 Mary Welsh Allen
 Miss Ruth Allen
 Mrs. Casey Jones Ancker
 Mildred Smith Anderson
 Nora Jeter Anderson
 Robert Anderson
 Virginia Levy Anderson
 Ruth Weber Andris
 Ruth Schrader Arft
 Margaret Hollands Armstrong
 Phyllis Smith Aspoas
 Karlotta Poindexter Auclair
 Betty Morgan Baggott
 Elsie Sue Forth Baldwin
 Candace Buss Ballard
 Ms. Joan Spangler Bancel
 Mr. Jerry Beck
 Lavone Burton Beebe
 Marjery Louise Cauthers
 Berryman
 Mary Lou McLeod Bertram
 Miss Marie Betzler
 Leo Birchler
 Susan McReynolds Bonnell
 Ms. Carol Braunschauen
 Carol Banta Brewer
 Mary Hughes Bridges
 Peggy Tittle Broday
 Kathleen DeCroes Bruce
 Frances Pauly Bryant
 Margaret Warner Burnett
 Ms. Susan Burns
 Mary Sayer Burrows
 Carol Ratjen Caldwell
 Eloise Worthington Calvert
 Dorothy Canty
 Gretel A. Carpenter
 Betriex Lee Carse
 Audrey Weinberg Cary

Launa Sturgess Casner
 Arthur Castile
 Dennis Cavanagh
 Candice Linden Chaffee
 Ruth Harbaugh Chapin
 Patricia Williams Charron
 Marian Kasper Childers
 Dorothy Wood Clark
 Miss Margaretha Clark
 Alice Neal Clarkson
 Jacquelyne Bond Clausonthue
 Miss Jane Cooper
 Erma Martin Couden
 Kate Bemis Cravens
 Adaline Ayers Cross
 Miss Deborah Crouch
 Ronald Crouther
 Margaret Howell Cunningham
 Miss Agnes Currie
 Miss Zilpha Curtin
 Miss Mary Darmstaetter
 Nancy Lambert Davenport
 Ann Cilne Deatherage
 Mary DeBartolo
 Dolores Boomer Decker
 Charlotte Johnston DeGolyer
 Miss Mary Dewey
 Ms. Diane Dicke
 Harriet Dalton Doerrie
 Bettylee Sleyster Dorsey
 Jean Willbrand Droste
 Merica Shawver Edwards
 Virginia Kohrer Edwards
 Mary Jo Shepard Eisenhauer
 Dorothy Padden Elich
 Carlene Newell Elmore
 Ms. Jane Ervin
 Patsy Holloway Erwin
 Sarah Hall Fandey
 Mary Miller Farrington
 Barbara Fite Faulkner
 Neola Luster Faus
 Jo Ann Bland Finley
 Miriam Neff Fischer
 Anita Reid Fleming
 Ms. Jane Fletcher
 Marian Schulzke Ford
 Lea Alexander Frailey
 Jane Wilson Friday
 Margaret Deming Frink
 Leah Thompson Fulton
 Caroline England Funk
 Charlotte Gilliom
 Maurine Potlitzer Glazer
 Gregory Gobberdiel
 De Alva McAlister Graham
 Gail Bartels Griffin
 Cindy Foote Gross
 Miss Talitha Grote
 Marilyn Malone Gustafson
 Lori Haberman-Wilson
 Jean Redpath Hagen
 Ginney Vanice Hahn
 Josephine Miles Hall
 Ms. Betty Hammett
 Cynthia Eve Ricklin Harmening
 Ms. Carol Bollinger Harrington
 Margaret Miller Harris
 Lois Griewank Hartman
 Freida Becker Hasek
 Denzil Hawes-Davis
 Pauline Gray Hearne
 Martin Hente
 Carol Fisher Hess
 Ellen Day Higgins
 Ms. Earlene Hill
 Nancy Dana Hill
 Mae Kane Hincke
 Frances Fitzgerald Hinsch
 Beverly Stukenbroeker Hirsch
 Polly Pollock Holway
 Lenore E. Horn
 Frances Watlington Hubbard
 Jane Graham Hubbell
 Patricia Mayfield Hunn
 Joyce Ganssle Hunt
 Sue Austin Hutchings
 Eloise Hainline Huwaldt
 Miss Mildred Iffrig
 Keith Jefferson
 Mrs. Mel Bemis Jenkins
 Joan McCarroll Johnson
 Catherine Donnell Jones
 Nell Henninger Jones
 Susan Drozda Jones
 Evelyn Helser Kaser
 Mr. Donald & Mrs. Laurie Keeran
 Mary Lou Thayer Kelley
 Mrs. J. Page Kemp
 Mimi Kemp-Hall
 Margaret Lee Hughes Kiely
 Jean Shelton Kinmonth
 Eddie Loud Kinzer
 Miss Dorothea Knepper
 June Horstmeyer Kottmeier
 Meredith Kasten Kraus
 Jonetta Tomcak Kurtz
 Miss Elizabeth Kuykendall
 Emma Morgan Lacy
 Virginia Beasley Lambert
 Kristi Hiekkka Langbein
 Marilyn Robison Lantz
 Diana Smith Lassen

Barbara Larmer Lawton
 Ms. Sara Cook Lewis
 Mary Ann Fowler Linneman
 Evelyn Richabaugh Lippelmann
 Ms. Michele Fitzpatrick Lowrance
 Virginia Litzelfelner Luetje
 Charlotte Ching Lum
 Ms. Karen Lumpe
 Betty Lindsay MacConnell
 Mary Trimble Maier
 Jeanne Swenson Mandell
 Frances Olson Marks
 Jane Edwards Marlow
 Ms. Lori Marshall
 Jacolyn Foreman Martin
 Helen Streeter Massey
 Mary Louise Bowles Maughan
 Barbara Clausen Mayginn
 Jean Stephenson Maynard
 Claride Woodward Mayo
 Marilyn Mays
 Nancy Babb McAdams
 Joyce Murphey McAfee
 Allie Mae Bornman McColgan
 Helen Jones McCown
 Ms. Jeannie McCutchan
 Mrs. William McEachron
 Lynn Jackson McHaney
 Helen Stewart McClines
 Carolyn Brewer McMillan
 Ms. Jessamine Hinds McMullen
 Ms. Ruth Ann Meyer
 Anne Griggs Midden
 Arline Heckman Miller
 Elizabeth Anne Field Miller
 Roberta Allison Miller
 Mr. Yasumichi Mitsui
 Sylvia Nelson Moldenhauer
 Margaret Orier Moon
 Amelia Siler Moore
 Miss Nancy Morgan
 Ruth Muegge
 Esther Moulthrop Muench
 Amy Basore Murphy
 Janice Nelson Murphy
 Edith Mandel Myers
 Thomas Nebel
 E. Corrine Paulsen Needham
 Katherine Morton Nelson
 Gail Gross Neumann, Ph.D.
 Colleen Rankin Nies
 Ms. Ruth Noblitt
 Karen Witt Noonan
 Marilyn Bennett Noonan
 Helen Thomas Olson
 Miss Constance Osgood
 Ms. Lindi Fredmeyer Overton
 John Pawelczak
 Joanna Achelpohl Peery
 Eulalia Geiger Petersen
 Dorothy Walsh Pokorny
 Ronald Polick
 Dorothy Hennig Popham
 Virginia Keck Powell
 Virginia Terry Preston
 Judith Smith Pribor
 Gary Prindville
 Miss Wanda Pringle
 Maxine Cooper Provost
 Helen Foster Purvis
 Carolyn Ledford Ragans
 Ms. Victoria Kern Ray
 Esther Barklage Rechter
 Sharon Worley Reimel
 Miss Alma Reitz
 Miss Eileen Reitz
 Jo Ann Liebermann Reynolds
 Carole Lockhart Roberts
 Jennelle Robertson
 Joan Langenbach Robinson
 Alice Prouty Root
 Norma Ione Olson Rundall
 Mrs. Tommy Buell Rupinski
 Janet Petersen Russell
 John Saeger
 Margaret Groce Sample
 Brian Samuels
 Sally Siemssen Schaefer
 Ms. Barbara Zeff Schifeling
 Debbie Montgomery Schnedler
 Mrs. Bobbie Moore Schonaerts
 Sue Puckhaber Sharp
 Lillian Smith Shaw
 Rebecca Achelpohl Shaw
 Sheila Willis Shaw
 Miss Dorothy Shippey
 Lucyl Shirk
 Polly Heninger Shlosman
 Marilyn Tweedie Shutz
 Joyce Fleet Silver
 Eleanor Brown Simpson
 Vera Jean Douthat Sink
 Jacquelyn Cheney Smith
 Ms. Sarah Smith
 Lila Robinson Sowell
 Doris Oxlez Spellman
 Betsy Kelton Stafford
 Rebecca Bahn Stanard
 Mary Bovaird Stark
 Ms. Kathleen Starner
 Miss Sara Stein
 Sylvia Wright Stern



Donor Honor Roll

Gifts received from July 1, 1986, to June 30, 1987

CENTURY CLUB

\$100 - \$159.99

Marie Smith Strawbridge
Sara Jefferson Stukenbroeker
Mary Jane Jennings Stutz
Sue Moss Sullivan
Linda Markuly Szilvasy
Victoria Smith Tarleton
Jane Rickman Tegen
Virginia Finley Thomas
Miss Marian Thompson
Nancy Lambert Thompson
Loretto Thompson
Thoroughman
Ann Hanna Tolly
Doris Gwin Townsend
Elane Reatherford Tufts
Mrs. Jerre Lewis Van Steenberg
Doris Smithson Van Vlissingen
Gerald Varker
Janice Rollins Vassar
Jean Stewart Vest
Janie Traner Wacker
Norma Sabin Wallingford
Bettye Jean Smith Walls
Ms. Vivian Ware
Mr. Roy & Mrs. Elizabeth Warren
Miss Evelyn Watson
Frances Metzger Weeks
Miss Debra Weiner
Miss Marilyn Weir
Laurel Andersen Werner
Miss Martha White
Prudence Paine White
Imogene Elrod Wilden
Marquerite Hersch Wiley
Kay Dunham Wilkinson
Marjorie Smith Wilkinson
Mary Elizabeth Mangold Willets
Ms. Marilyn Wilson-Hawkins
Miss Betti Wimberly
Miss Carol Wolter
Karen Roschke Woodfield
Virginia Ann Crusa Wyman
Gwendolyn Ryter Yaklich
Gloria Stunkel Young
Miss Roxanna Young
Mrs. Donald Zimmerman

ALUMNI

\$99.99 or less

Ms. Marjorie Abeling
Mary Abrahams
Barbara White Abston
Sam Acquisto
Catherine Harmon Adams
Ms. Judith Adams
Katherine McCormack Adams
Patricia Owens Adams
Carolyn Wood Adamson
Miss Drusilla Aden
Randall Adoor
Dorothy Adams Agee
Alice Holman Ahrens
Roger Akester
Ms. Lisa Ritter Albert
Ms. Beth Albertson
Patricia Kelly Albrecht
Carol Hammerschmidt Alcorn
Anna Marie Kistner Alexander
Miss Daisy Alexander
Ruth Kelley Allan
Florence Ziegler Allbritton
Kathryn Proter Allen
Miss Lorraine Allen
Marjorie Bernard Allen
Patricia Kirchherr Allen
Miss Rita Allen
Ms. Sandra Allen-Broadrick
Mr. Thomas & Mrs. Mary Allen
Barbara Richards Allman
Lydia Allred
Robert Alton
Ava Oltz Ambo
Ann Senholz Amey
Jane Bash Amick
Edna Todd Amos
Elizabeth Morris Amos
Anita Davy Amsinger
Barbara Hencke Amsler
Marie DeBasio Andel
Jean Swarr Anderson
Barbara Kriz Anderson
Betty McHatton Anderson
Ms. Bettye Anderson
Jane Welgeng Anderson
Miss Jean Anderson
Ms. Karen Anderson
Ms. Madeline D. Wood Anderson
Martha Barshfield Anderson
Nancy Jean Bailey Andrews
Stephen Andrews
Helendale Ledbetter Andrie
John Angleton
Martha Leonard Anthony
Mary Jo Anderson Archibold
Mary Sawiell Archard
Jane Lacy Ard
Ms. Flora Armon
Barbara Arnold
Sue Snyder Arnold

Francis Arrey
Ms. Carole Ashwell-Pross
Bonnie Jones Ashwood
Miss Anne Aspoas
Rita Atlas Willner
Miss Joanne Ator
Gracia Arnold Atterberg
Emily Moore-Atwood
Ms. Janet Aubuchon
Ms. Ann Austin
Miss Cornelia Austin
Madelin Connoughton Austin
Virginia Frank Austin
Barbara Hueftle Avery
Allen Bacher
Elaine Bachman
John Back
Barbara Widman Badgett
Eloise Schrader Bagby
Margaret Roberts Bagby
Sharon Walker Baggs
Richard Bahr
Martha Munday Baler
Dorothy Moss Bailey
Ms. Marjorie Bailey
Carolyn More Baker
John Bakewell
Lisa Leonard Baldwin
Ronald Ball
Julia Balliet
Camilla Haskins Banks
Eugenia Owen Banks
Sara Wilson Barker
Margaret Haddad Barkett
Dorothy Barklage
Mary Lee Nathan Barklage
Dr. Nancy Barklage
Sandra Louise Knapp Barklage
Donna Lacy Barksdale
Mary Neubert Barksdale
Wayne Barnes
Edna Fowler Bamett
Shirley Pollock Barnum
Mary Harris Barnwell
Janet Baron
Eleanor Innes Barr
Helen Stuckey Barrett
Louise Alewel Barrow
Miss Margaret Barry
William Barta
Mary Graveman Barteau
Janet Steven Barth
Ms. Lisa Barth
Stephen Barth
Roselise Hartmann Barthelme
Miss Helen Bartlett
Aileen Cowles Bartness
Brenda Bartz
Georgia Burndige Basko
Janet Rupert Bassel
Mary Hamacher Bates
Marianna Carter Batt
Anna Baty
Diane Kennedy Bauer
Dorothy Langridge Baumann
Ms. Theresa Bax
Maelou Baxter
Nell Stephens Bayliss
Charlotte Bays
Sharman Beasley
Mary Scott Beck
Mary Thomas Beck
Susan White Beck
David Becker
Dolara Kellerman Beckerle
Mary Bell Beebe
Kathryn Horslund Beeken
Nancy Johns Beeler
Joyce Houde Beerman
Mary Flaniken Beers
Pauline Vandever Beesley
Verna Bredenbeck Beeson
Bernard Beggan
Ms. Bettye Behle
Mary Ellen Packard Beich
Sylvia East Beilsmith
Renee Dieckmann Belk
Carri Abernathy Bell
Cathy Falcone Bell
Elizabeth Kelloway Bell
Pamela Szabo Bell
Sandra Lu Billings Bell
Rosemary Nissley Bellis
Ms. Sebastian Bellomo
Mildred Enns Belkows
Lil Pittman Bemis
Ms. Enis Ulvestad Benda
Ms. Jacquelyn Couse Bender
Marian VanHorn-Bengis
Mrs. Carl Hembree Bentz
Helena Campbell Bergelin
Miss Dorothy Berger
JoAnn Swalley Berglund
Ms. Sally Berman
Jean Elder Bernard
Ms. Joan Bernbaum
Mrs. Edie Rogers Berner
Harriet Small Bernstein
Arminta Nichols Berry
Evelyn Armstrong Berry
Marilyn Moore Berry
Miss Nieta Berry
Rev. Sue Berry
Nita Pardee Besse
Helen Culbertson Beste
Nan Vancil Biddle
Miss Patricia Bideman
Janice Overaker Bierman
Susan Freeman Bindslev
Gail Cunningham Binswanger
Andrienne Griffith Birge

Ms. Stephanie Bischof
Joanne Johnson Bishop
Ms. Joanne Bittick
Fern Palmer Bittner
Miss Betty Black
Leola Ferguson Black
Madeline Michimins Black
Nancy Porter Blackwell
Louise Ritter Blackwood
Kathryn Kiefner Blair
Jean Zeeryp Blake
Ms. Lucia Jester Blakley
Carol Knight Blanchard
Mrs. Verne Backhaus Blank
Ms. Teresa Blankenship
Linda Hoke Bledsoe
Margaret Burton Bleiler
Eunice Willbrand Blessing
Selma Sonin Block
Carolyn Cannon Bloebaum
Jaclyn Blume
Judy Jewell Body
Miss Marcella Boerding
Mary Hawkins Boggs
Kathryn Hale Bohn
Theresa Downey Boin
Betty Stothower Bolan
Miss Nora Ann Boland
Ms. Darcy Beintker Boles
Barbara Bender Bolton
Ann Carlisle Boltz
James Bond
Robert Bond
Miss Mary Books
Garfield Boon
Susan Terry Borne
Mary Adams Borrowman
Rachel Amado Bortnick
Christopher Boschert
Harriet Bowen Bost
Barbara Ruth Boswell
Helen Cury Boswell
Mary Ann Parker Boutlier
Anna Balsiger Bovard
Kay Magie Bowden
June Jordan Bowen
Barbara Park Bower
Elizabeth Everett Bowers
Jan Ayres Bowers
William Bowers
Loene Zuber Bowlin
Elizabeth Thomas Bowman
Annie Holdoway Boyd
Judith Boyer
Ms. Cynthia Boyle
Ms. Jean Tilden Bradfish
J. Stephen Brady
Ms. Sherry Brady
Betty Patton Braeuninger
Carolynn Coons Brake
Ms. Linda Brakensiek
Dennis Brandt
Ruth Manson Brancham
Mrs. Sue Johnson Brannock
Elma Milhouse Brannon
Ms. Elizabeth Branstetter
David Brantley
Ina Rae Barklage Brazeale
Ms. Mary Bredenber
Ms. Karen Breeden
Marilyn Kuhlmann Brickler
Ms. Nancy Bridges
Ms. Susan Bridges
Gary Briggs
Mrs. Henry Etta Holmes Brinton
Kate Taylor Brinton
Ms. Jackie Brittingham
Barbara Broadfoot
Miss Pat Weber Broadnax
Elinor Runnenburger Brock
Miss Marvadene Brock
Beverly Busher Brockley
Joann Schroder Brod
Marjorie Gibson Broeker
Jeffrey Bromberg
Barbara Works Brooke
Constance Mueller Brooks
Janet Lee Brooks
Barbara Blevins Brown
Carol Weinstein Brown
Joyce Smith Brown
Ms. Kemlyn Brown
Mrs. Malcolm Brown
Marla Dill Brown
Mary McCleod Brown
Miss Mildred Brown
Nancy Brown
Orpha Crossan Brown
Peggy Achelpohl Brown
Catherine Holmes Broyles
Ms. Shirley Broz
Deloris Bruck
Marge Carroll Bruenger
Ms. Frances Brueshaber
Barbara Burcham Brumitt
Dorothea Wehrle Brundage
Ms. Elizabeth Brune
Mary Wood Brunsman
Pauline Gardner Bryan
Kathryn Hays Bubalo
Catherine Cully Buchholz
Jennifer Sullivan Buchwald
Betty Moore Buck
Dr. Lynn Beck Buck
Ava Beguhn Buckmaster
Isabel Breese Buell
Lillian Hilliard Buford
Elise Donaldson Burger
Ms. Joann Bull

Charlotte Bagley Bunn
Marreen Buntaine
Judith Stute Burda
Colleen Hafley Burford
Miss Ethel Burgard
Sue Parker Burgdorf
Jack Burke
Mark Burke
Nina Davis Burke
Dr. Mary Quinn Burkhardt
Susanne Martin Burks
Frances Reineke Burnett
Alice Kingsbury Burrows
Stephen Burrows
Ms. Penny Bursac
Gerald Burson
Reba Crow Burtis
Rita Buse
Helen Waddington Busher
Katherine Lewis Bushnell
Ms. Heidi Bushur
Ella Jolly Cain
Miss June Callaway
Ann Stukenbroeker Callender
Phyllis Manske Calvert
Laura Doerr Campbell
Leslie McColgin Campbell
Bruce Cannon
Charlotte Fisher Capelle
Mary Anne Umsted Caponegro
Mrs. Darcy Stout Capstick
Jean Moore Carfagno
Peter Carich
Della Nash Carley
Janet Anderson Carlson
Miss Mary Ann Carmichale
Barbara Sly Cames
Ms. Joan Cames
Keith Carpenter
Ms. Mary Carpenter
Timothy Carr
John Carrico
Joanna Williams Carrigan
Ms. Sherry Lyn Carrigan
Emily Givens Carroll
Lillie Harrison Carroll
Virginia Sonnenday Carson
Enola Smith Carter
Ms. Suzanne Casseau
Ola Henry Cassens
Sarah Matthews Caton
Joyce Hamilton Caulman
Alma Wilkerson Chamberlain
Ms. Carol Chambers
Carolyn Nelison Chambers
Patricia Zimmerman Chambers
Ms. Sally Hillstrom Chambers
Virginia Beazley Chambers
Mary McNail Chamblin
Elizabeth Burke Champion
Elsie Mauze Chandler
Margaret Ball Chandler
Sarah Trapp Chapman
Miss Dominique Charles
Steven Charleston
Shirley Cohen Chasan
Genevieve Kniese Chaudhuri
Sharon Soutar Cherry
Alda Schierding Childress
Ethel Mavrick Chimoures
Ms. Chrystal Chostner
Scott Christensen
Joan Ward Clott
Elizabeth Jenness Clark
Ms. Jane Lindsay Clark
Judith Rees Clark
Ruth Abilgaard Clark
Ms. Wendy Clark
Margaret Wedge Clausen
Pearl Payne Clawson
Ronald Cleary
Barbara Bacon Clemons
Mr. David & Mrs. Maureen Cleveland
Ms. Roseann Clever
Barbara Lawes Click
Nancy Clarke Clodfelder
Miss Louis Clough
Barbara Hahn Cockle
Joan Coerver
Lydia Olcott Coffey
Dorothy Solomon Cohen
C. Sue McNaughton Colbert
Barbara Krouch Cole
Dana Vincil Cole
Doris Heinerman Cole
Katherine Moore Cole
Ms. Rebecca Cole
Ms. Carla Campbell Coleman
Christopher Coleman
Ms. Barbara Ferguson Collier
Janyth Collins
Kevin Collins
Louise Gunvalsen Collins
Ms. Nancy Arthur Collins
Ms. Geraldine Colmo
Julia Rasmussen Colvin
Mary Ann Wood Comfort
Ms. Patricia Bremer Compton
Jill Orthel Connaghan
Dorothy Hoffman Conner
Thomas Conry
John Contos
Katharine Taylor Conway
Cheryl Ogden Cook
Ms. Margaret Cook
Ms. Anita Cooley
Ruth Medcall Cooley
Doris Doddridge Cooper
Sara Nickols Cooper

Gretchen Siegfried Coppin
Mrs. Zoe Whitmore Coppins
Jane McWilliams Corbett
Kathryn Anderson Corl
Barton Corley
Adeline Lawson Corigan
Carolyn Hatcher Corigan
Christine Bullerdick Costanzo
Ann Arnold Cotrell
Mildred Antle Cottrell
Jeannette Lawrence Cowan
Peggy Hale Cowin
Ms. Mary Cox
Mary Cox
Ms. Patricia Cox
Constance Koch Cozzoni
Mrs. Aylin Crawford
Charles Crawford
Mary Martin Creel
Ann Moore Croft
Sara Russell-Cronan
Harriet Courtney Crosby
Katherine Meyer Crosby
Ms. Alice Ingham Crose
Jeffrey Cross
Darnie Brownlee Crosswell
Kathryn Scroggin Crouch
Kathryn Craig Crouse
Vivian Smith Crow
Willie Gleeson Crowell
Ms. Nancy Kirkley Crumbaugh
Wanda Jennings Crystal
Linda Blakey Cummings
Susan Miller Cummins
Edna Mitchell Cunningham
Miss Virginia Curfman
Johnna Blanton Curle
Mary Price Currie
Barbara Sutton Curtis
Carol Johnson Curtis
Robert Cushman
Frances Camp Custer
William Marc Cutright
Ms. Marlene Czarlinsky
Louise McMulloch Daggett
Ann Harper Dagon
Mary Booth Dallas
Helen Buchanan Dalrymple
Emma Schacht Damme
Emmy Lou Daniel
Mary Lowe Daniel
Betty Lou Bivins Danielson
Jean Whitney Danielson
Sarah Wynkoop Danielson
Henrietta McLaughlin Danner
Jeanne Briles Damall
David Dauphin
Carolyn Hughes Davenport
Ann Townsend Davidson
Miss Barbara Davidson
Miss Ella Davidson
Marcia Kelly Davidson
Mary Ann Cox Davidson
Beatrice McKeller Davis
Charlotte Holmes Davis
Miss Edith Davis
Elizabeth Rowland Davis
Miss Fanny Davis
Helen Schmoltzer Davis
Ms. Kathleen Davis
Kathryn Elliott Davis
Miss Marjorie Davis
Martha McCormick Davis
Dr. Stephen & Elizabeth Davis
Viella Smerling Davis
Patti Puchett Daekins
Jacquelyn Morrill Day
Ms. Judith Day
Kevin Day
Joan DeKruif
Ms. Lee DeLott
Ms. Charlotte Calene Dean
Jan Buckingham DeBruyne
Mrs. Winston Dees
Ms. Wanda DeForest
Ms. Mary Katherine Delaney
Martha Radford Delmon
W. J. Demberly
Barbara Shuttleworth Dempsey
Martha Denney
Ms. Susan Dennis
Phyllis Kobe Dennison
Mary Jane Laughlin Denslow
Daniel Deptula
Ms. Billie Derham
Nancy Rodgers Dering
Ms. Karen Desko
Penelope Crieghton Dewell
Edward Dewhirst
Judy Brown Dickerson
Sydney Schmoeyer Dickson
Doris Langeneckert Dieckgraeffe
Steven Dieringer
Alta Finrock Diers
Virginia Freund Dieruf
Douglas Dietz
Jan Richmond Dineen
Ms. Josephine Dittmeier
Virginia Green Ditzler
Miss Marjorie Dix
Mrs. Robert Burnett Dobbs
Virginia Sloop Doddridge
Dorothy Alley Doerr
Valerie Welschmeyer Doerr
Carolyn Kinney Doherty
Miss Vicki Dohmann
Mary Nethery Dold
Rebecca Thaler Dolin
Donna Hotz Dollgener

Patricia Uehling Donelan
Bonnie McKibbin Donnell
Rick Dorenkamp
Phoebe Willbrand Dorn
Sandra Baer Dorn
Dorothy Bailey Dotson
Ms. Paula Dotson
Nancy Rector Douglas
Vicky Benson Douglas
Francis Gomer Doughten
Linda Culp Dowling
Darla Ehler Downer
Margie Spearing Downey
Mary Rudy Downing
Ann Smith-Downs
Larry Doyle
Lawrence Doyle
Carolyn Bower Drake
Ann Baldwin Drewel
Rene Mayer Drewes
Kathleen Duerr
Rosemary Edminster Duffy
June Goran Dulany
Marion Goran DuLany
Miss Barbara Dultz
Gail Fues Dunaway
Alice Fathauer Duncan
Emily Harris Dunham
Doris Rogers Dunlap
Ms. Sarah Dunn
Jeane Kahler Dunton
Kenneth DuVall
Sarah King Dvorin
Donald Dwyer
Joan Dykema
Olga Gilster Dykstra
Mary Aldridge East
Marjorie Foxless Easterday
Mary Cook Eaton
Anna Brecht Ebel
Marilyn Mermis Ebersole
David Echele
Mary Anne Horstmeier Echeimeier
Patricia Lacey Eckhardt
Betty Jane Cragin Eckhart
Polly Percival Edel
Camilla McCluer Edwards
Marjorie Murphy Edwards
Mary Bennett Edwards
Mildred Atkinson Edwards
Ruth McColland Edwards
Virginia Farmloe Edwards
Ms. Anne Edwards-Cork
Sarah Wynkoop Egan
Evelyn Johnson Egan
Paula Garrison Eglin
Betty Jo Drother Ehrlich
Dorothy Schultz Eirten
David Eisenbath
Karen Ell-Atwood
Patricia Crawford Elliot
Jane Swalley Elliott
Jane Fox Elliott
Arthur C. Elliot, Jr.
Jeanne Ellis-Bensema
Martha Hinsen Eltonhead
Ronald Emberg
Virginia Dana Emigholz
Dorothy Maulding Emmons
Eva Emory
Stephane Sievers Engelbreton
Georgia Wood Engelking
Carlene Holt English
Miss Mary Ellen Enley
Gladys Gladstein Ephraim
Sherol Faulkner Erickson
Barbara Ericson
Sandra Saettele Erwin
Louise Geyer Eshleman
Joanne Burger Estes
Ruth Howe Etchison
Ms. Martha Thompson Ethridge
Carolyn Burion Evans
Dorothy Mae Donovan Evans
Ms. Frances Hanson Evans
Ms. Lois Evans
Phyllis Greenwood Evans
Ms. Rebecca Evans
Ms. Dorothy Everly
Mildred Gehlbach Ey
Jean Bagby Ezzell
Jane Wood Fagg
Mary Fitts Fagras
Miss Martha Smith Fails
Bette Gierse Fain
Miss Dorothy Armiss Fair
Linda Fee Fairchild
Joy LaVigne Fairclough
Mary Chapman Fales
Helen Devine Fangman
Naomi Ferencz Farley
Mercedes Weber Farmer
Nancy Hudson Felner
Betty Berg Feist
William Feldewerth
Joseph Feldmann
Josephine Warren Feller
Ms. Lucille Fennell
Ms. Esther Fenning
Marion Randolph Ferguson
Pam Herman Ferris
Meredith Reichel Fewins
Jo Clea Simpson Fezler
Sonja Lee Flala
Catherine Klingenberg Fickes
Celsa Garza Figger
Alice McCauley Filkins
Dorothy Smith Fillingim
Ethlyn Edelen Finch



Gifts received from July 1, 1986, to June 30, 1987

- Marjorie Jump-Fincham
Ruth Ann Charles Finck
C. Joan LeClaire Fink
Katherine Tuepker Finks
Mrs. Mardell Seelye Finsel
Deane Dettmann Fischer
Patricia Tobin Fischer
Patricia Ann Malin Fish
Russell Fish
Frederick Fisher
Gary Fisher
Lola Kincaid Fisher
Mark Fisher
Catherine Siemer Fisk
Mrs. Howard Miller Fitch
Jerry Fitch
Dorothy Kamp Fite
Josephine Lupfer Fitschen
Shirley Lee Fitzgerald
Dorothy Lyden Firzorris
Betty Butler Fitzpatrick
Dorothy Neblett Fix
Dr. Mary Lou Flear
Francis Bauer Floerke
Jo Anne Beltzer Flory
Ms. Sharon Foard
Mildred Tanke Foglesong
Elizabeth Burnett Fogus
Barbara Hiebert Foley
Sharon Brown Fortenberry
June Spandet Foster
Katherine Hocker Foster
Rose Parmelee Foster
Estelle Miller Fotsch
Geraldine Davies Fowler
Ms. Helen Fox
Shirl Fox
Ms. Charlotte Frailey
Steven Frances
Elaine Koenigsdorf Frank
Mrs. Jack Frank
Sandra Franke
Marjorie Faeth Frankenbach
Claudia Privett Franklin
Marci Morris Franklin
Amelia Williams Frankum
Ms. Gail Fraser
Miss Frances Frazier
Mrs. Carl Frederick
June Nagel Freeland
Ann Feldman Freeman
Marcia Lape Freeman
Virginia Freeman
Jerry French
Benjamin Frey
Peggy Newell Fridley
Doris Horslund Fritcher
Miss Lucile Fritz
Ms. Peggy Fritz
Miss Wilma Fritz
Patricia Holden Frost
Daniel Fry
Karen Kivlin Fry
Carolyn Hempelman Frye
Kathleen Paschal Fullenwider
Mary Laughlin Fuller
Charles Fullerton
Sheila Shannon Gaezke
Elizabeth LaBarre Gahan
Ms. Sandra Gain
Ronald Gaines
Betty Keitel Gainey
Ronald Gaines
Betty Keitel Gainey
Dorothy Fullerton Gallagher
Sara Phillips Gallagher
Sondra Rae Swindle Galperin
Grace Quebbeman Galt
Mary Abney Gamble
Phyllis Carpenter Gamble
Ira Joy Chodorow Gandler
Deborah Spitzmiller Gann
Mary Lou Reilly Garbe
Georgia Byrd Garland
Steven Garner
Marilyn Henderson Garrels
Darlean Carney Garrett
Suzanne Garrigues
Genevieve Sherwin Garst
Sondra Volkmer Garton
Trillave Green Gates
Anna Nothstine Gay
Helen Johnson Gay
Deloris Davis Gaylord
Margaret Hardin Gebert
Sharon Gebhart
Louise Walker Geslin
Sandra Gordon Gehman
Elizabeth Frederickson Geiser
Carolyn Shanks Geissler
Belva Goff Geist
Karen Gelber
Robert Geller
Ms. Virginia Gender
Mary Kerley George
Etta Davenport Georgeson
Grace Beardsley Gerfen
Ms. Lynette Gerschefske
Dorothy Roeder Gerstner
Doris Nahigian Gertmenian
Miss Laura Geyer
Miss Luella Geyer
Folsta Bailey Gibbons
Mildred Porter Gibbons
Toni Chappelle Gibbons
Ms. Nancy Gibbs
Christine Harris Gibson
Marcia DeLuca Gibson
Stanley Gibson
Norma Snyder Gieseman
Don Gilbert
Jane Foust Gilbert
Margaret Einspahr Gilbert
Kay Geithman Gill
Evelyn Noland Gillmore
Miriam Wedeking Gilmore
Susan Barbee Gima
Mary Ann Pierson Ginnow
Linn Goodspeed Ginsler
- Harriett Quin Giordano
Jo Ann O'Flynn Gipe
Marcia Ann Cooper Giske
Agnes Cuthberston Gladbach
Miss Karen Glaser
Martha Baylis Glasgow
Ann Whitson Glass
Elaine Comick Glassman
Kathleen Belland Glenn
Corliss Olivier Glennon
Ms. Patricia Glenton
Ms. Suzanne Glenzy
Sharlene Agerter Glock
Mrs. Ardyth Dudek Glorie
Geraldine Hamblin Gubreege
Mildred Reaves Goeke
Miriam Harris Goldberg
Lisa Bruere Goldworm
Margaret Westgate Goltermann
Virginia McClure Good
Beverly Harrington Goodman
Helen Ezell Goodman
Marguerite Feller-Goodson
Lloyd Goolsby
Clark Gordon
Gertie Lambert Gordon
Joyce Glauber Gordon
Ms. Linda Sue Gottschalk
Miss Louise Goulding
Ms. Pat Grace
Patria Junell Grace
Ms. Virginia Grady
Deborah Stephenson Graham
Miriam Robinson Graham
Lana McNabb Greeley
Ms. Cynthia McGinley Green
Jean Houghton Green
Myrtle Wilson Green
Rosemary Gass Green
Miss Janice Greene
Sue Ellen Conde Greene
Virginia Aylesworth Green
Elizabeth Curry Greenleaf
Margaret DeMand Greer
Delores Gregg
Betty Johnson Gregory
Eleanor Brown Gribble
Edward Griesenauer
Virginia Morgan Griggs
Jean Grigsby
Lucy Ross Grimm
Delores Thomas Griner
Donna McCaslin Grissom
Dr. Willille Mae Viertel Grissom
Georgia Wanderer Griswold
Alana Gross
Mary Burger Gross
Dorothy Wetzel Grossman
Ruth Singer Grossman
Jeanne DuLany Groth
Miss Marjorie Groves
Ms. Toni Grovier
Jean Schneider Gruber
John Grundhauser
Miss Lisa Grundhauser
Betty Hagemann Grundmann
Richard Grysiewtz
Gloria Baker Guest
Sally Hermann Gulick
Dr. Jan Gund
Mrs. Richard Bartholomew Gusafson
Mary Thielecke Guthrie
Noveta Wilks Guthrie
Christopher Haberman-Wilson
Miss Lois Hachtmeyer
Linda Scott Hackenbury
Betsy Fischer Hadley
Ms. Donna Drury Hafer
Helen Withington Hafling
Stephanie Hagadom-Erdmann
Dianne McCormick Hagan
Ronald Hagen
Cynthia Schiermeier Hahn
Dennis Hahn
Susan Farthing Halls
Rena Eberspacher Hale
Ms. Catherine Bothe Halferty
Clare Edman Hall
Marguerite Metzger Hall
Margaret Grundhauser-Haller
Suzanne Lash Halloran
Eldagene Naylor Hametner
Carol Wehrli Hamilton
Frances Santoro Hamilton
Ms. Betty Lou Hamline
Michael Hammel
Ms. Pauline Hammen
Ms. Nancy Hampton
Ann Cortazzo Hanawalt
Mary Ellen England Hancock
Elizabeth Roberts Hard
Patricia Hanka Handley
Barbara Schweppe Hanes
Jeannette Jackson Hanke
Linda Pendley Hankins
Susan Kent Hann
Anne Blackburn Hannah-Roy
Harriet Ridge Hanne
Mrs. Gerald Dunger Hansen
Nina Jones Hanslick
Cherie O'Brien Hanson
Pamela Hutchinson Hanson
Jennifer Vacek Harcourt
Gertrude Benson Hardesty
Elizabeth Hardin
Alannette Stallings Hare
Shirley Booth Hare
Ms. Eileen Harkins
Miss Roanne Harless
Phyllis Boyes Harmata
Mary Reece Harper
Barbara Montgomery Harris
Cynthia Pack Harris
Mrs. Halcyon Burch Harris
Mrs. Marian Mann Harris
Freda Eberspacher Harrison
Miss Helen Harrison
Ruth Finch Harrison
Gwendolyn Payne Hart
- Sally Sicks Hart
Joanne Jackson Hartfield
Ms. Kim Hartley
Ms. Brenda Hartman
Jo Ann Hartwig Filling
Kathleen Duello Harvey
Ms. Mary D. Hasty
Miss Margaret Hatala
Mira Roberts Hatley
Joan Haugk
Evelyn Hausmann
Mrs. Van Haviland
Arthur Hawkins
Mercedes Bryan Hawkins
Mary Touchstone Haymes
Ruth Ann Ball Haymes
Suzanne Wessel Hazelton
Ms. Molly Hazen
Prudence Keniston Heaney
Doreen Chapman Heater
Robert Hechler
Miss Ellen Hecht
Mary Washburn Helfin
Charles Hefti
Maridee Hill Hegstrom
Ms. Carol Heilman
Ralph Heim
Ms. Roce Campbell Heine
Donna Mae Lugan Heiring
Elizabeth Stoery Heise
Ms. Daine Held
Audrey Evers Hellen
Ms. Lisa Helwig
Eleanor Harsh Helzel
Ruth Barquist Helzer
Marjorie Green Henceroth
Bettye Montgomery Henderson
Ms. Bonnie Henderson
Chiquita Smith Henderson
Diane Varner Henderson
Elaine Huddleston Henderson
Frankie Henderson
Larry Henderson
Ruth Barnes Henderson
Patricia Thomas Hendrickson
Dyer Henke
Ada Hemingway Henning
Dan Henroid
Carol Henry
Ms. Sally Henry
Doris Shanklin Hensley
Karen Heinlein Henson
Jean Milroy Hergert
Tom Hergert
Elizabeth Herod
Ms. Shirley Herr
Kathleen Herrmann
Barbara Rubin Hertenstein
Louise Cauger Herweh
Lesley Herzog
Ms. Gretchen Bartenbach Hess
Jane Tomlinson Hess
Patsy Tapp Hester
Estelle Swanson Hetzler
Martha Hardin Heusler
Miss Jean Heye
Amita Driskill Hickman
Miss Marjorie Hicks
Olta DeWitt Hicks
Sarah Coon Hicks
Mildred Morehead Hickson
Amanda Frederickson Highsaw
Ms. Corinne Hill
Lori Tetter Hill
Marjorie Ecker Hill
Jane Mauk Hilliard
Mary Morton Hillix
Marie Lansing Hillman
Mrs. Louis Frederick Hinch
Marilyn Hues Hinckly
Helen Dondanville Hindson
Audrey Hitch
Vivien Kong Ho
Diane Floyd Hodges
Judith Joyner Hodges
Ms. Bonnie Hoeckelman
Ms. Linda Hoffman
Margery Dixon Hoffman
Md. Kay Hoffmeister
Marilyn Debeer Hoffis
Bonnie Webb Hogan
Ms. Charlotte Wait Holder
George Holets
Richard Hollander
Patricia Ward Hollar
Ms. Leah Hollenberger
Dorothy Barton Hollingsworth
Catharine Schroeder Holmes
Gary Holst
Elizabeth Spitzer Holt
Virginia Getman Hooper
Grace Richmond Hoover
Margaret Quinlan Hopkins
Gretchen Vesely Hoppe
Susan Greer Hoppin
Judith Walker Hom
Richard Homick
Mary Poorman Horsley
Ms. Violet Horvath
Minnie Curtis Horwich
Ethan Hoskin
Mrs. Bert Schemerhorn Hostinsky
Alice Reynolds Hougen
Betty Silcott Hough
Francis Shepard Houghton
Ms. Ruth Houghton
Vernice Hansen Houk
Harriet Hilpert Houser
Martha Patterson Houser
Michael Hovanec
Mrs. C. A. Hirman Houde
Barbara Harshbarger Howard
Hilda Glenn Howard
Mrs. Coy Payne Howe
Virginia Leverington Howe
Cynthia Lohman Howell
Donna Hrditzkown
Miss Joyce Huber
David Hubert
- Ms. Patricia Hubert
Jennifer Mitchell Hubley
Margaret Stroup Hudson
Linda Long Huebner
Ann Torrns Huesemann
Jeannie Hamon Huesemann
Kay Fellabaum Hueser
Estelle Hays Huff
Anne Agee Hughes
Edna Buenger Hughes
Ms. Edna Hughes
Ms. Jeanette Hughes
Marjory Dick Hughes
Mary Williams Hughes
Phyllis Leamon Hughes
Anna Seaman Hulme
Frances Ware Huls
Margaret Amhart Humphrey
Mary Jane Rabon Humphreys
Mrs. Harry Peterson Hunsicker
Ann Blethen Hung
Jacqueline Schwab Hunt
Miss Anna Hurie
Carolyn Cousins Hurst
Helen Wheeler Hurst
Patricia Schlib Hurster
Ms. Cynthia Huse
Leslie Huster
Ruth Denton Hutcherson
Phyllis Verploeg Hutchins
Phyllis Durbahn Hutchinson
Mary Gann Hyde
Ellen Skillman Iden
Albertga Iffrig
Ann Redington Imgrund
John Ingerslew
Marilyn Fawley Inglett
Marguerite Colville Ingram
Donna DeWees Inman
Charlotte York Irey
Susan Ellis Issler
Anita Marshall Jackson
Grace Ritter Jackson
Mary Goff Jackson
Mary Williams Jackson
Mary Clower-Jackson
Phyllis Ogden Jackson
Sonya Goulden Jacobs
Ms. Sally Jacobsen
Mary Barrett Jacobus
Miss Anne Jacoby
Ms. Janice C. Jacoby
Eleanor Wilcoxson Jaeger
Juliet Trotter Jakowski
Agnes McCarthy James
Caroline Irish James
Steven James
Miss Betsy Bomberger-Jamison
Dr. Harriet Jardine
Ms. Priscilla Walter Jason
Miss Betsy Jeffery
Bonnie Jeffries
Linda Cotton Jennings
Mrs. Avis Muller Jensen
Wilhelmina Hervig Jessee
Mrs. Bari Holden Throchmorton
Roy Joachimstaler
Rebecca Hill Jobman
Robert Johannngemeier
Virginia Houm Johanson
Ms. Gisela Johns
Barbara Scott Johnson
Barbara Harlan Johnson
Berle Johnson
Betty Brown Johnson
Brenda Johnson
Janice Seitz Johnson
Ms. Kym Henderson Johnson
Leslie Rodieck Johnson
Lynn Russell Johnson
Mildred Birckett Johnson
Pamela Stephenson Johnson
Richard Johnson
Mrs. Sharon Athy Johnson
Arabel Wycoff Johnston
David Johnston
Wallace Johnston
Irene Atkins Johnstone
Miss Lee Jolliffe
Betty Arnold Jones
Ms. Carolyn Houseworth Jones
Catherine Neuman Jones
Christina McCoy Jones
Conett McGregor Jones
Donna Jones-Felger
Frances Harper Jones
Geraldine Wachter Jones
Hilda Culver Jones
Joanne Reed Jones
Kristi Slayman Jones
Margaret Burton Jones
Yvonne Williamson Jones
Lorraine Hackmann Jordan
Martha Crable Jordan
Dorothy Gunter Joss
Ms. Jean Bishop Joseph
Mildred Stoecker Joseph
Miss Susan Josephson
Robert Joslin
Thomas Joy
Valerie Campbell Judkins
Miss Ruth Kahn
Miss Carolyn Kaiser
Kathrine Perry Kanser
C. Ann Wolff Kaplan
Jean Woolpy Kaplan
Susan Karaffa-Schwetzer
Nan Core Karcher
Ms. Nancy Karl
Ms. Mary Schmidt Kash
Ms. Joan Katz
Miss Kay Kazmaier
Jennie Michelson Keeline
Margaret Ann Ahrens Keeser
Angeliki Vellou Keil
Ms. Peggy Keim
Carolyn Damme Keller
Mary Crayden Keller
- Ms. Arlene Kellogg
Ms. Joyce Kelly
Ms. Maureen Kelly
Betty Creighton Kemper
Janis Gow Kemper
Victor Kemper
Phyllis Laux Kendig
Miss Dorothy Kennedy
Ms. Rosemarie Dickherber Kennedy
Virginia Young Kenney
Ms. Mary Kennon
Jean Kiralfy Kent
Harriette Gannaway Kern
Mary Ann Green Kern
Jeanett Abercrombie Kerr
Dona Jean Lawshe Key
Ken Kiely
Ms. Aldine Kiemann
Kathryn Keegan Kilgore
Cevilla Line Kim
Margaret Patch Kimbrough
Legia Jaeger King
Ms. Miriam King-Watts
Virginia Kinion
Martha Faxon Kinney
Priscilla Jane Bogue Kinney
Eloile Alcorn Kipp
Patty Boothe Kirby
Ms. Kathleen Harte Kirk
Patricia Barker Kirk
Kay Kirkland Stark
Alla Jo Walter Kirkpatrick
Betty Rhodes Kirkpatrick
Dorothy Hess Kirkpatrick
Shirley Goodman Kirshner
Elizabeth Brandon Kissick
Ms. Marianne Kitchell
Marianne Barnes Klabau
Fleta Moeller Klein
Ms. Marilyn Klein
Ms. Terry Kleindienst
Geraldine Rasdal Kleist
Josephine Mackey Kline
Lucille Meinbolt Klinger
Wilhelmina Achelpohl Klippel
Elizabeth Harris Kloffenstein
Jean Buckner Klopstad
Marilyn Sarmmelman Klutenkamper
Ms. Betty Knapp
Patricia Martin Kneemueller
Ann Lohman Knichel
Ann Burke Knies
Anne Dakin Knight
Robert Knittel
Jean Brawner Knoop
Miss Katherine Koch
Stephen Kochanski
Ronald Koehler
Alice Standeven Koehne
Rick Koelz
Barbara Koenig-Brugger
Kenneth Koemer
Barbara Millay Koester
Mary Lee Johnson Koeving
Mary Roussalis Kofakis
Nancy Lantz Kollman
Patricia Pope Konersmann
Stephanie Yunker Kordas
Irene Altheide Korte
Margaret Barton Korty
Joan Buckner Krage
Connie Schoewe Kraus
Ms. Beverly Krause
Sara Joy Sahli Kristinat
Joyce Jurgensen Krogman
Patricia Jones Krueger
Virginia Sterling Krueger
Miss Juliana Krupa
Wilma Schacht Kryger
Dr. Evelyn Kryssing
Yasu Kudo
Nancy McGraw Kuehnie
Mardean Hutchinson Kuenstler
Martha Anne Reid Kuenzi
Stanley Kuhlo
Ms. Judith Cover Kulb
Ms. Barbara Kuntze
Mary Wilene Mayer Kurfman
Ms. Laurie Kurtz
E. Jane Rasdal Kuska
Irene Gunther Kutsch
Ms. Susan LaBrie
Margaret Crawford LaBorde
Virginia Evans Ladd
Patricia Ford Laffoon
Harriet Thistlewood LaFon
Merriam Turner Lagow
Mrs. Antonio Peterson Lamarchina
Thomas Lamb
Enor Ritter Lammess
Darline Frantz Lamson
Ms. Nancy Landers
Barbara Landreth
Ms. Jane Landsbaum
Jesse Lane
Lois Null Lane
Margie Terrell Langstaff
Ms. Jacquelyn Langston
Wanda Gottl Larcom
Garland Barnett Largent
Frances Johnson Larkin
Beulah Geyer Latshare
Richard Lauer
Illomay Hachtmeyer Launer
Ms. Janis Lauricella
June Ann Olander Levora
Andrew Lawrence
Ms. Larilyn Lawrence
Martha Shortridge Lawrence
Ms. Susan Lawrence
Ann Woolldridge Lawrie
Ms. Wendy Lawton
Phyllis Henderson Layton
Jane Diel Le Doux
Ms. Vicki Lea
Sara Wilkey Leavitt
Betty Ann Carleton Lee
- Carolyn Spears-Lee
Ms. Chai Yu Lee
Karen Hartong Lee
Richard Lee
Jeffrey Leeka
Gertrude Wollenberger Leetz
Marjorie Phillis LeGrande
Edward Lehrman
Cheri LaRue Leifert
Elizabeth Pinkerton Leighty
Mary Dewees Leistner
Peggy King Leland
Mary Ruth Welshons Letwica
Thomas Lenart
Jean Kimberly Lengeling
Ms. Sheila Lenkman
Rose Willner Lerman
Betty Cline Leslie
Ann Rayburn Levenson
Carol Campbell Leventhal
Doris Cohen Levine
Dorothy Wilkerson Levine
Ms. Lyn Levine
Barbara Wexner Levy
Miss Dollie Lewallen
Gary Lee Lewey
Charlyn Hollenbeck Lewis
Miss Elizabeth Lewis
Ellen Goode-Lewis
Irene Brooks Lewis
Dr. Lena Lewis
Marion Hoyt Lewis
Ms. Sandra Liebman
Richard Lieding
Mary Elizabeth Null Liehr
Elissa Hedrick Liescheidt
Miss Judith Light
Dorthea Shurgiss Lind
Joanne Sullivan Lindblad
Catherine Burk Lindbloom
John Linkowski
Peggy Schiemeyer Linn
Sarah Burgess Linton
Coralie Branson Lippold
Mrs. Hester James Lisby
Blanche Hestwood Lischer
Carmen Bell Little
Shirley Anderson Little
S. David Lobmaster
Ms. Debra Locke
Ms. Judith Loeffler
Cindy Loesing
Ms. Melva Lohman
Miss J. Ellen Long
Sharon Fogarty Long
Ms. Cynthia Lord
Ms. Sylvia Lorenz-Hunt
Ann Gardner Lorimier
John Lorinc
Mr. Edward & Mrs. Sandra Lovinguth
Genevieve Lott Lowe
Kathryn Davis Lowe
Ms. Victoria Lowe
Judy Peterson Lowell
Ms. Janet Lowry
Lula Merrill Lowry
Harriet Hall Luchtman
Miss Mary Lucke
Ruth Correa Lucke
Martha Sparks Ludden
Thelma Riske Ludwing
William Lueker
Shirley Bizelli Luerding
Shirley Ott Luethemeyer
John Lundberg
G. Genevieve Lunning
Jo Ann Goodart Lupo
Betty Smythe Lutz
Marjorie Buchanan Lutz
Louise Condon Lyman
Miss M. Frances Lynch
Lois Hanna Lynd
Kathryn Mayer Lynn
Louise Parkin Lynn
Margaret Prinster Lynn
Ms. Eilene Lyons
Ms. Keith Lyou
Gaelic Ching Ma
Ms. Alyce Mabrey
Nora Taylor MacDougall
Janet Phillips Macey
Elizabeth Owens MacGregory
Rebecca Lake MacLellan
Betty Fooks Macleod
Ms. Kirsty Magnusson
Margaret Bailey Mallick
Kathleen Weaver Mallick
Janet Geary Mallinson
Marie Cauhape Malone
Edward Maloney
Ms. Helen Maloney
Betty Crawford Mammel
Dee Ann Glass Manley
Marguerite Eckles Mann
Marilyn Buckham Manning
Virginia Peirce Manrose
Montelle Moore Mansfield
Bill Manshardt
Elizabeth Barnes Mapes
Maxine Basch Marcollin
Deane Izenberg Marcus
Charlotte Kanealy Marsh
Ms. Doris Margrabe
Helen Keithly Markham
Frances Carpenter Marks
Elizabeth Markus
Mary Elizabeth Hill Marquardt
Marianne Bensing Marshall
Jo Anne Hompes Marsolais
Dr. Carolyn Weisse Martin
James Martin
Jill Rebman Martin
Miss Marjory Martin
Ms. Patricia Martin
Ms. Paulette Martin
Ronald Martin
Ms. Sue Stegall Martin
Mrs. Wade H. Emerson Martin, Jr.



Gifts received from July 1, 1986, to June 30, 1987

Ms. Louise Mary
John Maskey
Ms. Joan Masters
Anna Louise Gumm Masterson
Patricia Matejic
Katherine Pence Mathews
Helen Calder Matthews
Beth Stokes Maupin
Ms. Joan Maupin
Elisabeth Huppertz Maurice
Shirley Funk Mauzy
Robert Maxey
Carol Schaffner Maxwell
Florence Jones Maxwell
Joanne Schumacher Maxwell
Marjorie Compton May
Michael May
Ms. Helen Mayden
Ms. Eilan Mayes
Mary Gaston Mayo
Mary Kate McAfee
Sondra Wensel McAllister
Marion Daudt McBride
Mary Wharton McBride
Marguerite Rogers McCall
Mary Jane Bower McMartney
Virginia Sanders McCarty
Julia Steele McCausland
Ruth Ann Kern McClellan
Miss Lucy Anne McCluer
Miriam McCormick McClure
Ms. Mary Wood McCollom
Ms. Linda McCombs
Nita Coldiron McCombs
Rosemary Egelhoff McConkey
Babs Lawton McConnell
Peggy Pennel McCord
Linda Granger McCormick
Ruth Kirby McCoy
Amelia Alves McCracken
Michael McCraw
Sue Allender McCullah
Anne Herring McCully
Audrey Wenger McCully
Martha Mathis McDaniel
Barbara Landenberger McDaniels
Anabel Mojonier McDonald
Marquette Bloker McDonald
Patricia Powell McDonald
Virginia Mering McDonald
Barbara McDougal
Pauline Rickbaugh McElwee
Ms. Lou Ann McElyea
Ms. Sharon McGaully
Ms. Rita McGee
Sandra Bartunek McGinley
Alberta Johnson McGrath
Craig McGrath
Mrs. Billie McDonaals McGuire
Kathleen Barnabee McKelvey
Sandra Schmitt-McKenzie
Jane Maunel McKernon
Alma Wilson McKinley
Marion Ringhausen McKinley
Beverly Randall McKinney
Ms. Joyce McKinney
Kendrick McCoy
Ms. Barbara McLaughlin
Lolita Birggs McLean
Maurine Oakes McLean
Sally Heyer McLees
Patrick McMackin
Janet Warrick McMullen
Linda Coleman McMullen
JoAnne Holley McNair
Colleen Bedell McNeal
Miss Ann McNeer
Susan Wood McNeil
Matilda Hagerty McPherron
Sylvia Carmichael McRoy
Frank McSpaden
John McSweeney
Ann Frazier McWhinney
Reathel House McWhorton
Mildred Henney Meeder
Doris Schneider Meklinger
Richard Meier
Mildred Seymour Meler
Carol Lee Kane Menges
Ms. Patricia McKee Menson
Glenda Sloan Mercer
Beatrice Whitlock Merrill
Diane Smith Merritt
Mary Cherry Mertens
Michael Mertens
Eleanor Stewart Metcalfe
Ms. Cheryl Metzger
Carol Osadsky Meuser
Dora Kohler Meyer
Lena Gordon Meyer
Marilyn Meyer
Marjorie Keyes Meyer
Mary Doolittle Meyer
Patricia DePuy Meyer
Anne Beadle Meyercord
Iris Fleischaker Meyerhardt
Michael E. Meyering
Karen Klabau Meyers
Eleanor Modert Meyers
Glenn Michaels
Nancy Green Michales
Mark Michelson
Ms. Ruth Mihev
Mary Leeper Millbern
Christopher Miller
Helen Farmer Miller
Jacqueline Sellers Miller
Jane Klingner Miller
Ms. Jeranda Miller
Ms. Lisa Miller
Marjorie Burton Miller
Mary Wilkinson Miller
Rebecca Rath Miller
Shirlee Kreigh Miller
Ms. Theresa Miller
Miss Vola May Miller
Murel Anglin Millerborg
Helen Graybill Millhouse
Betty Eckler Mills

Judy Strait Mills
Constance Miltenberger
Virginia Tuggle Mintum
Mary Mathias Misener
Jane Leedy-Mitchell
Mrs. Joseph Stiefel Mitchell
Julia Hunt Mitchell
Ms. Linda Mize
Josie Donaldson Mobley
Ms. Eileen Moccia
Ms. Kristi Mochow
Mrs. Gentry Moellenhoff
Susan Biehl Moellering
Mary Mathews Moenkhaus
Miss Virginia Moerschel
Lucia Jahsmann Mogelson
Ms. Sallie Mogerma
Mary Jane Marts Mollett
Margaret Jean Hanna Molzen
Janet Neilson Monig
Constance Clark Monsour
Ms. Patsy Bohannon Montilli
Ann Gardner Montera
Ms. Judie Montgomery
Marilyn Eichhorn Montgomery
Patricia Fowler Montross
Ms. Jean Moody
Cheryl Spalding Moore
Miss Dorothy Moore
Elaine Eckenroth Moore
Gay Garrigan Moore
Ms. Harriet Bruce Moore
Linda Davis Moore
Mary Brinkman Moore
Ms. Patricia Moore
Ruth Eldredge Moore
Gertrude Wessling Moore
Neal Motts
John Moran
Dorothy Sandmann Morgan
Jane Robertson Morgan
Jeanette Chase Morgan
Miss Marilyn Morgan
Marye Anne Warmock Morgan
Mrs. Zoe Hughett Morgan
William Morgenthaler
Craig Morrison
Donald Morrison
Jean Baker Morrissey
Margaret Dourmany Morton
Patsy Jones Moseley
Lloyd Moses
Lynn Sager Moulton
Miss Mary Ellen Moylan
Jeanne Gross Mudd
Renne Ryter Mueller
Loren Muench
Louise Danforth Muenstermann
Jane Colahan Mullen
Mildred Deibler Mullen
June Bruba Mullins
June Herd Multog
John Munch
R. Anne Thomas Munroe
Howard Murray
Mary Hess Murray
Rosemary Bernhoester Murray
Ruth Beckmann Murray
Frances Doak Myers
Ms. Lisa Myers
Lynn Hosmer Myers
Dorothy Jackson Naideth
Ms. Sheryl Nascimento
Elizabeth Crossman Nash
Linda Nash Eberhardt
Patricia Grove Nash
Miss Virginia Natho
Lillian Willson Naumann
Susan Apple Naylor
Pauline Jones Neale
Eleanor Stubbelfield Neel
Mary Morris Neidorf
Sara Bavis Neilson
Frances Harnacker Nelson
Bobbie Netsch
Mrs. Helmut Hawerkost Netzer
Evelyn Pigg Newcomb
Ms. Vera Newman
Mary Ann Clark Newman
Ms. Rose Neyland
Mrs. Whitney (Billie) Vance Nicholson
Irene Voigt Nickel
Helen Haldane Nicolos
Richard Niedenfuehr
Margaret Christ Niederberger
Nancy Aikens Niess
Ms. Cindy Niggley
Mrs. Walter Kolb Niles
Mary Warner Ninker
Mary Jo Griebeling Niskin
Mary Gatchell Nissing
Kenneth Niswonger
Mary Kingston Nix
Ann Storjohann Nixon
Julia True Noah
Mrs. Eloyce Noel
Miss Margie Noel
Cheryl Ranchino Nofsinger
Darla Ames Nolder
Patricia Prinster Nolle
Julia Sutton Noonan
Ms. Betty Orr Noonan
Patricia Potter Nord
Dorothy Felger Norden
Glendora Raasch Nordlie
Anna Bebb Norman
Arametha McFadden Novinger
Mary Hammond Nowell
Ms. Carla Noziglia
Margaret Rice Nuckolls
Mazine Tanke Meier
Jean Frawley Nystrom
Ms. Carolyn Nystrom Reising
Barbara Miller O'Brien
Durinda Belshe O'Brien
Frances Kellam O'Brien
Loretta Howe O'Brien
Ms. Kathleen O'Donnell

Joanne Kleberger O'Keefe
Clarence O'Sullivan
Ronnie Oakley
Virginia Kibler Obenschain
Froma Johnson Oberkramer
David Oberrieder
Miss Barbara Obrecht
Evelyn Fox Ochs
Mary Oelklaus
Karen Diehr Oelschlaeger
Mrs. Laverne Oetting
Carolyn Oglerby Ogen
Anne Flory Ohlmeier
Ike Okoye
Sally Ann Chestnut Oldham
Ms. Martha Michael Oliver
Gerry Olliges
Elaine Mertz Olsen
Katherine Krueger Olsen
Dorothy Susong Olson
Glenn Olson
Miss Velma Olson
Mr. Terry Orf
Michael Orlando
Ms. Catherine Orr
Miss Jane Orthel
Helen Schelosky Ortmeier
Dr. Betty Tyree Osiek
Judith Arnold Ostermann
Lucinda Depptin Ostmann
Ann Gilbert Ostrow
Constance Adamson Overesch
Miss Ethel Owen
Dianne Dethmers Paca
Mary Frances Deaver Page
Miss Dorothy Palmer
Genelle Skelly Palmer
Gloria Omohundro Palmer
Marjorie Wood Palmer
Ms. Rhonda Sue Palmer
Chester Palumbo
Mary Nancy Owen Pappas
Ronald Parido
Carol Hachtmeyer Park
Glenda Grammer Park
Miss Roberta Park
Julia Palmer Parker
Ms. Marsha Hollander Parker
Miss Helen Parks
Mary Pat Wortham Parrish
Evelyn Mead Parsons
Mary Lewis Patterson
Nan Schwada Patterson
Miss Mary Ellen Moylan
Ms. Mary Jo Paul
Ms. Constance Pearson
Miss Electra Pearson
Miss Eugenia Pearson
Eloise Macy Pedersen
Dorothy Boutin Pedicord
Ms. Linda Peeler
Elizabeth Pekkala
Ms. Jeanette Webb Pendarvis
Miss Lois Penn
Diane Holloway Penney
Gail Savage Pennington
Jacqueline Morrison Pennington
Ms. Deborah Pennybacker
Sallie Van Buren Pennybacker
Kathryn Bennett Pepper
Dorothy Neblett Perkins
Jo Ann Crawford Perkins
Margaret Kendall Perkins
Ruth Soule Perkins
Burnice Ross Perlich
Jean Settle Perrone
Ms. Donna Pessin
Ms. Judith Peters
Helen Laitner Petersen
Beulah Klophenstein Peterson
Helene Peterson
Jon Peterson
Marion Pray Peterson
Mary Coultr Peterson
Melva Swofford Peterson
Roberta Elliott Peterson
Gloria Stribling Pettjohn
Marilyn Mouser Pewitt
Timothy Pfeiffer
Ms. Jeanne Pfister
Ms. Melbe Counts Pfueger
Ms. Charlotte Pflum
Mr. & Mrs. Dennis Phillion
Miss Ann Phillips
Ms. Lisa Phillips
Nancy Chaney Phillips
Marjorie Briggs Phinney
Ms. Mary Piazza
Joyce Holt Pickering
Mary Stewart Pickering
James Pickett
Mary Berger Pilkerton
Paul Pini
Jennie Spencer Pilkerton
Joy Kruse Pinkston
Martha Pearl Piper
Ms. Susan Piper
Miss Correne Placek
Mona Hand Plackmeyer
Leora Lewellen Plexico
Ms. Susan Plakos
Michael Ploch
Amelia Plowman-Hayden
Grace Poertner
Ms. Peggy Pohiman
Annette Avgerinos Polemi
Lindsay Polette
Shirley Mitton Pollard
Ms. Mary Polonowski
Julianne Robinson Pompa
Elizabeth Burket Poole
Ina Culver Poole
Ms. Kimberly Poole
Alfred Pope
Norma Camp Pope
Ms. Joyce Porter
Helen Horvath Posey
Ann Stewart Posner
Miss Owanna Post
Reba Crowdem Postels

Norma Ewing Powell
Ms. Jean Powers
Miss Lillian Powers
Frances McEvoy Pownall
Carmen Zarraga Praelzo
Ms. Catherine Price
Ms. Carol Primeau
Janet Prior
Ms. Susan Proost
Nancy Nagl Pryor
Mary Mills Putnam
Jerry Cumeathers Putney
Alice Spitzer Quenichet
Miss Lucile Quernheim
Flora Cravens Quillion
Mrs. Nahid Bozorgmehr Rachlin
Kathleen Stafford Raiche
Ms. Beverly Burkes Raines
Ms. Pauline Raines
Ms. Nancy Rakonick
Daniel Ramacciotti
Julia Booth Rand
Ms. Marjorie Rand
Laura Thomas Randall
Joe Randolph
Mary Jane Schneider Range
Marjorie Day Ranney
Charlotte Barr Rapp
Mary Rash
Jane Gadberry Ratliff
Catherine Lansden Rattan
Marianne Faerber Rauch
Ann Wall Rauscher
Betty Wheeler Rawlings
Eva Thomason Ray
Robert Rayfield
Dean Reska
Melvin Rector
Mrs. Sydney Finks Reding
Aliene Cherry Reed
Betty Newlon Reed
Mary Frances Davis Reed
Peggy Brvins Reed
Bryan Reeder
Ms. Carol Reeves
Betty Lillibridge Reid
Gary Reinwald
Alice Wethers Reiser
Dorothy Miller Reitz
Susan Morton Reitz
Leah Floyd Reno
Karen Kohlsted Remsink
Lucille Blessing Replogle
Levena Morrison Reynolds
Lee Reynolds
Alma Martin Rice
Henrietta Kolocotronis Rice
Ms. R. Taylor Rice
Louanne Bell Rice
Gwynn Otto Richards
Ms. Betty Allen Richardson
Miss Eleanor Richardson
Marjorie Lange Richardson
Patricia Jane Evans Richardson
Betty Wilkerson Richolson
Susan Schmitkons Ricketson
Dorothy Ricketts
Mrs. O'Garlan Ricks
Jane Montgomery Riddle
Sherman Riegler
Anne Bush Rindo
Miss Johnnie Riner
Naoma Aldridge Risch
Norine Ziegler Rishel
Katharine Klotzbach Risk
Ella Schacht Risser
Frank Rittenhouse
Miss Elizabeth Ritter
Peggy Meldrum Rivett
Mary See Roach
Joanne Robbins
Suzanne Elliott Robbins
Mrs. James McGehee Roberts
Mary Wyatt Roberts
Miss Ann Robinson
Donna Deffenbaugh Robinson
Lucille Ward Robinson
Lucille Chappel Robinson
Ms. Jo Anne Rocklage
Ms. Bonnie Burkhalter Rodenburg
Esther Parker Rodemund
Hazel Cannon Rodgers
Frank Roeder
Beverly Anne Bohne Rogers
Gerald Rogers
Lorraine Klockenbrink Rogers
V. Jane Givens Rohweder
Ms. Marjorie Rolfsmeier
Ms. Agatha Rollins
Florence Anderson Roloff
Elizabeth Mason Rone
Louise Pankey Rooke
Virginia Steinke Root
Marilyn Kroepel Roques
Mary Elizabeth Stuhler Rosborough
Mary Korb Rosen
Fannie Straus Rosenthal
Joyce Anne Urwiler Roslund
Barbara Collister Ross
Mary Greer Ross
Molly Guard Ross
Dr. Virginia Spears Ross
George Rossi
Mary Jo Floumoy Roter
Margaret Hohtanz Roth
Mrs. Jessie Benson Row
Katherine Hampe Rowe
Miss Angelene Roysse
Thelma Shannon Ruddell
Virginia Swain Ruesch
Joan Hake Ruethain
Ms. Mary Eileen Rufkahr
Robert Ruiz
Veone Peterson Rule
Mary Sue Kellams Rulfs
John & Mrs. Kathy Rundel
Marjorie Cashman Rung
Patricia Latherow Rupert
Marian Kinney Rush
Marguerite Miller Russel

Ms. Barbara Kirchoff Russell
Cora Payne Russell
Patricia Elliott Russell
Anthony Rutkowski
Ann Jones Ryburn
Phyllis Gambill Ryding
Roberta Nielsen Saalfeld
Genanne Giuffre Sables
Melinda Sachs
Mary Halm Salyers
Dr. Anastacia Aldridge Samson
Ms. Diane DeWoody Sandberg
June Myers Sandel
Mrs. Rosamond Milde Sander
Helen Staggemeier Sandford
Ms. Caroline Sandison
Peter San Filippo
Ms. Karen Satterfield
Miss Joyce Saunders
Margaret Conrad Saxton
Kristin Ericson Schaefer
Ms. Marcia Holway Schaefer
Mary Kanady Schaller
Dr. Andrea Schalman
William Schanda
Thomas Schapp
Miss Joellen Schertz
Virginia Stormont Schiermeier
Miss Susan Schiller
Miss Barbara Schlinkert
Charlotte Nathan Schlitz
Ms. Mary Schmedeke
Lois Fiedler Schmelzel
Kay Kirkland Schmidt
Helen Stevenson Schmidt
Mrs. Carlie Samuel Schnabl
Barbara Moore Schnacke
May Bohrer Schnatmeier
Nancy McDaniel Schneck
Martha Schnedler
Irma Klingel Schneider
Margaret Schneider
Nancy Schneider
William Schneider
Lucille Miller Schnyder
Ms. Mary Koucky Schoeffler
Ruth Tatroe Schoenbaum
Adelaide Robbins Schoenfeldt
Miss Sally Schofield
Frances Knorp Scholle
Marilyn Schoolman
Kathleen Berra Schrage
Virginia Porter Schreiber
Ms. Pamela Schroeder
Mrs. Genee Head Schubert
Ms. Penny Schulte
Miss Lyn Schultz
Pamela Barnhart Schultz
Eleanor Wallenbrock Schutz
Barbara Burnett Schumacher
Miss Nancy Schuster
Mrs. Drewann King Schutte
Lillian Schuttenberg
Mrs. Hortense Yoffe Schwartz
Vickey Gobberdell Schwartz
Ms. Linda Schwartzberg
Martha Hard Schwarz
Barbara Weber Schwendeman
Donna McCoy Scott
Edith Parker Scott
Elizabeth French Scott
Judith Reeves Scott
Martha Reubelt Scott
Susie Richards Scruggs
Nancy Achepohl Seay
Diane Ayer Seidel
Ms. Alice Seise-Eden
Ms. Carol Randolph Selph
Barbara Boyle Sennholz
Joseph Serles
John Sesti
Beverly Wood Sewell
Shirley Cleland Sewell
Rosalee Sly Seymour
Linda Williams Shackelford
Miss Kathryn Shaddock
Harlan Shake
Vivian Nicholas Shanafelt
Mrs. Toni Tempesta Shannon
Ms. Beverly Babbage Sharp
Curtis Shartzter
Patti Shavelson
Jane Allen Mobley Shaw
Jeanne Schneider Shaw
Margaret McIntosh Shaw
Rachel Thompson Shaw
Cheryl Kubik Shearer
Jennifer Shedden
Ms. Barbara Sheehan
Ms. Jane Shelburg
Margery Wiley Shelby
Althea Bowen Sheldon
Annabel Gangnath Shellenberger
Jane Falter Shelley
Michael Shelton
Elaine Gray Sherer
Melinda Hibbeler Sherman
Katherine Fryfogle Sherrow
Miriam Banwell Shield
Dan Shields
Mrs. Bartie Bowen Shinn
Ms. Janet Silvers Shooks
Mary Kirchherr Shoquist
Margaret Boss Short
Darrell Shoultz
Mrs. Suk Hun Chan Shum
Sid Shum
Margaret Shelkey Sides
Ms. Barbara Sido
Harry Siebert
Ms. Sandra Siehl
Marguerite Tainter Siemssen
Carrie Lee Laney Silliman
Joy Salomon Silver
Betty Galford Simandl
Ms. Adriana Simeran
Mrs. Sweeney Simkins
Ms. Karen Simmons
Ellenor Hall Simpson
Sarabel Pemberton Simpson
Elizabeth Haynes Sims

Marjorie Danforth Singer
Charlotte Bennison Skeer
Claire Scarr Slack
Genevieve Willett Slade
Ms. Bobbie Slattery
Gloria Bursey Slykhouse
Mildred Trumbo Smart
Ms. Paula Smashey
Alicia Young Smedley
Andrew Smith
Anna Barnes Smith
Carma Haselmire Smith
Carolyn Anderson Smith
Christopher Smith
Coralee Buchard Smith
Daphne Jenkins Smith
Dixie Jamison Smith
Floise Smith
Esther Lietemeyer Smith
Miss Frances Smith
Josephine Nicks Smith
Dr. Mary Smith
Malba Deets Smith
Ms. Patricia Smith
Mrs. Ray Smith
Robert Smith
Roger Smith
Sharon Serre Smith
Ms. Sheila Smith
Shirley Holcomb Smith
Shirley Gardner Shultz
Stephanie Harms Smith
Susan Hill Smith
Betty Jean Swisher Smoot
Toni Pitts Smythe
Suzanne Ellis Snipes
Nelle Eastwood Snyder
Miss Renee Snyder
Roger Snyder
Virginia Ruth Soller
Ms. Bonnie Solomon
Ms. Lee Sommer
Judith Maltby Sorenson
Kathryn Board South
Ms. Betty Simpson Spaar
Dorothy Hall Spaeth
Janette Birch Spees
Ethel Landreth Spencer
Susan Spencer-Evans
Alice Hughes Speraw
Suzanne Johnson Sperry
Marguerite Fischer Spiker
Marjorie McPherson Spillane
Florence Vellenga Spindler
Marcia Lazarus Spiro
Wanda Spivey
Ruth Staggemeier
Charlotte Seehorn Stahl
Ann Stahschmidt
Miss Sharon Stahschmidt
Miss Susan Staley
Jackie Fulton Stanford
Miss Hildagard Stanz
Margaret Kinkade Starr
Ruth Hayden Steber
Ms. Claudia Stedelin
Thomas Steed
Ms. Nelda Gates Steele
Mary Ann Black Steele
Marvin Stehr
Mary Lou Durbin Stehr
Kathy Drake Steinberg
Lucille Meyer Steinhoff
Theresa Holback Stenson
Judith Galyas Stenta
Carol Cory Stephens
Glenn Stephenson
Linda Ziegler Stephenson
Miss Virginia Stern
Ms. Dorothy Monroe Stetson
Mrs. Jean Pool Steuben
Nellie Ruth Don Carlos Stevenson
Dorothy Couch Stick
Ferris Sticksel
Denise Stillman
Susan Groskopf Stine
Vera Missimer Stivers
Clara Meints Stockenber
Suzanne Anderson Stockman
Connie Gibson Stoeker
A. Ione Nichols Stoenber
Gayle Armstrong Stokes
Larry Stone
Harriet Allen Stork
Keven Stouffer
Jeannette Bell Stout
Emma Shultz Strahle
Sheila Strait
Gwynne Filling Straus
Mrs. Jean Streeter
Ms. Hazel Stretz
Margaret Greer Strobel
Barbara Beechley Stroberg
Mary Ellen Wall Strobl
Kathryn Stroder
Betty Burton Strong
Mary Jo Windrowd Struckman
Margaret Fagg Struthers
Neil Stubbs
Ms. Carla Stuhler
Eric Stuhler
Miss Joanne Stuhr
Ms. Sally Stumberg
Imogene Stroh Stumpf
Dorothy Blue Super
Jeannette Caplan Sulfian
Sandra McCandless Suittor
Marian Suleeba Sullivan
Sarah Vick Sullivan
Dorothea McCulloh Sutherland
Katherine Davis Sutherland
Louise Chandler Sutton
Orlene Campbell Sutton
Virginia Bauske Sutton
Barbara Adams Swanson
Ruth Weinkauff Swanson
Ms. Sharol Sweeney
Mrs. Clinton Morris Sweet
Mrs. Constance Schwarzkopf Sweitzer
Carole Joy Swenson
Susan Hershey Swenson
Irene Wilson Swickard



Gifts received from July 1, 1986, to June 30, 1987

Barbara Watkins Swift
 Mary Cox Swisher
 Helen Rieth Taft
 Ms. Katherine Tait
 Mary Jane Tarling Take
 Louise Hallworth Talhouk
 Marilyn Appelbaum Tallman
 Ms. Paulette Tansey
 Josephine Russel Tarrant
 Muriel Weisbaum Tatarsky
 Sarah Hodges Tatum
 Catherine Blackman Taylor
 Mami Lou Albertson Taylor
 Mary Sterling Taylor
 Michael Taylor
 Susan Blue Taylor
 William Tayon
 Ms. Dorothy Teas
 Melva Vail Teeters
 Kathryn Legge Tegt
 Carol Stillwell Teichmann
 Doris McCreary Terrell
 Virginia Cramer Terrell
 Elizabeth Kilbury Terry
 Frances Freels Terry
 Margaret Taylor Terry
 Ms. Patricia Terry
 George Tessmer
 Doris Deisenroth Theobald
 Mary Meckenstock Theobald
 Marianne Thiel
 Miss Deborah Thomas
 Judith Umbarger Thomas
 Mary White Thomas
 Danice Cheatham Thompson
 Lynne Mennemeier Thompson
 Valerie Gemeinhardt Thompson
 Catherine Foltz Thomson
 Mark Thomson
 Mary Grieger Thornburgh
 Carolyn Platt Thornton
 Vivian Barnard Thorpe
 Mrs. Wesley Shigley Tignor
 Nancy Hulse Tirrell
 Mary Anne Carr Todd
 Judith Lawing Toman
 Laurabell Parkinson Tombaugh
 Peggy Meacham Tomes
 Elizabeth Aylward Tomson
 Donna Wittenborn Towers
 W. Charlene Reich Townley
 Miss Pamela Townsend
 Marjorie Florence Townsend-Bayne
 Irene M. Stimson Tracy
 Vernon Tracy
 Ms. Carol Gardner Transou
 Eunice Brennan Traver
 Barbara White Trefz
 Pat Bollman Trendley
 Virginia Ratcliff Trent
 Patricia Gleeson Treptow
 Ms. Lourdes Triana
 Jeanie Lou Whittless Troesch
 Patricia Trout
 Ms. Karen Walker Troubridge
 Virginia Cobb Trubey
 Jane Palmer Trombo
 Margaret Lu Tso
 Miss Charlotte Tucker
 Jean Knorr Tucker
 Ms. Mary Lou Tucker
 Glen Tumbough
 Betty Pacatte Turner
 Ms. M. Lois Turner
 Margaret Stookey Turner
 Shirley Noland Turner
 Elsie Wallerstedt Tyler
 Miss Mary Tyne
 Charlotte Gasaway Underwood
 Dane Lou Underwood
 Howard Uptain
 Barbara Harrisberger Uptegraft
 Barbara Elsholtz Urquhart
 Mary Graves Vacek
 Treva Jane Ogan Van Griethuysen
 Sarah Camstoun Van Gulik
 Nancy Patterson VanLoenen
 David VanMierlo
 Genevieve Green VanSlyck
 Mildred French VanWagner
 Geneva Horstmeier Vance
 Janet Culbertson Vamon
 Leslie English Vaughan
 Linda Allen Vedder
 James Venables
 Kathryn Hill Venner M.D.
 Miss Anne Venters
 Ronald Verduin
 Judith Ames Verkest
 Ms. Jane Vickrey
 Vera Kappleman Vieman
 Mrs. Jean Thiery Vietor
 Mrs. Jean Bordeaux Vigneault
 Jane Everett Vogel
 Laura Vogler
 Ms. Laura Vonland
 Kenneth Voss
 Marjery Elster Wack
 Miss Barbara Wade
 Patricia Thurmond Wade
 Mary Burch Waggoner
 Ruth Peterson Waggoner
 Patricia Youmans Wagner
 Rosemary Fones Walczak
 James Waldeck
 Miss Norma Walker
 Ms. Sharon Miller Wall
 Jo Ann Dodsworth Wallen
 Ms. Virginia Waller
 Diana Watson Walter
 Helen Stahl Walter
 Joyce Hube Walters
 Miss Kathleen Ward
 Ms. Rilla Ward
 Diana Macurda Warren
 Mrs. Adah Parkinson Waterbury
 Ms. Evelyn Waterman
 Marilee Damall Waters
 Patricia McCutcheon Wathen

Betty Roark Watkins
 Ms. Emily Bruce Watson
 Ruth Schaefer Watts
 James Waulford
 Rebecca Carr Wayland
 Sally Sayle Westersby
 Robert & Mrs. Helen Weaver
 Nancy Graves Webb
 Dr. Rosemary Gaffney Webb
 Evelyn Russell Webber
 Ann Schaberg Webbink
 Cynthia Tyring Weber
 Margaret Clothier Weber
 Mildred Brown Weedn
 Jerry Weems
 Caroline Starr Wehmer
 David Wehner
 Ms. Brenda Wehl
 Walter Weik
 Ms. Anne Weil
 Mary Worley Weinrich
 Virgil Weiss
 Marjorie Anderson Welch
 Shirley Holland Welles
 Katherine Lovitt Wells
 Dr. Kathleen Swiers Wells
 Barbara Bond Vander Wende
 Emeline Geyer Wenger
 Alice Bainum Wenke
 Miss Marilyn Wenneker
 Miss Clara Wentker
 Janet Saville Wenzel
 Marguerite Garden Wesley
 Diane Duff Wessel
 Ruth Schoene Wessler
 Dorothy West
 Alice Belding Westerfeld
 Carole Linhart Westerfeld
 Miss Janet Westmann
 Ms. Rosanne Wettach
 Mrs. Jean Morony Whalen
 Cecelia Cofer Wheeler
 Elizabeth Johnston Wheeler
 Eugene Wheeler
 Eulelia Miller Wheeler
 Gwendolyn Golladay White
 Mrs. Jean McMurry White
 Ms. Mary Whiteley
 Ms. Anne Whitney
 Betty Ann Suber Whiton
 Martha Ann Treadway Whitt
 J. Lorraine Whittington
 George Whitworth
 Ms. Ellen Koehler Wick
 Ms. Ann Wienstroer
 Bonnie Zelle Wilcox
 Miss Terry Wilder
 Joseph Wildt
 Ms. Ann Wiley
 Wade Wilkin
 Emily Watson Wilkinson
 Leonora Blackhurst Wilkinson
 Melba Schaper Wilkinson
 Ralph Willey
 Alice Kimbrough Williams
 Dorothy Jane Waters Williams
 Elinor Grubb Williams
 Helen Wohlford Williams
 Joan Houghton Williams
 Josephine Trice Williams
 Julie Richards Williams
 Miss June Williams
 Kathor Lett Williams
 Mary Seip Williams
 Nancy Bounds Williams
 Janet Warfield Williams
 Doris Bomford Wilson
 Evelyn Garvin Wilson
 Jane Finley Wilson
 Louise Blossier Wilson
 Margaret Perrine Wilson
 Ms. Nancy Anderson Wilson
 Mrs. Randi Kapp Wilson
 Mrs. Marion Wilson
 James Winka
 Mary Hopke Winiker
 Gary Winschel
 Jane Havenhill Winter
 Miss Kathleen Winter
 Joyce DePuy Winters
 Joyce Creamer Winters
 Martha Ann England Wischmeier
 Kathryn Bozarth Wise
 Claris Brian Withrow
 Hazel Puronen Witte
 Rose Marie Murfey Wittl
 Ms. Margaret Wittmann
 Charlotte Gardner Woehler
 Marjorie Morgan Wolfe
 Mary Wolfe
 Judith Wolff
 Sally Seudder Woltsberger
 Margaret Gaffney Woltsarsky
 Ann Darby Womelsdorf
 Dennis Wood
 Mrs. Hermine Lambrecht Wood
 Sally Kettelkamp Wood
 Phyllis Sharrar Woods
 Marguerite Raymer Woodson
 Sally Sue Joy Woodson
 Frances Cowan Wookridge
 Marcia Tomlinson Works
 Marian Eakin Woyna
 Constance Cockburn Wright
 Dorothy Holcomb Wright
 Judith Mair Wright
 Ms. T. J. Wright
 James Wurm
 Judy Hagerty Wyckoff
 Miss Marjorie Wycoff
 Ms. Kit Fu
 Mabel Gernold Wysmann
 Marion Pohlman Yaeger
 Lillian Yahn
 Laura Manuel Yates
 Shirley Laue Yates
 Helen Davis Yeager
 Willetta Walker Yeager
 Miss Martha Yingling

Iona Dyer Youk
 Barbara Stevens Young
 Edna Lewis Young
 Miss Sharon Young
 Rebecca Carr Wayland
 Mary Beckman Zabel
 Ms. Mary Hay Zabolosky
 Mrs. Jean Chamberlain Zanders
 Emilie Blume Zasada
 Marguerite McNeer Zehner
 Roy Zeigler
 Agnes Kister Zell
 Ms. Suzanne Zeller
 Mrs. Jean Zerr
 Ms. Ernestine Zidzik
 Betty Burnham Ziegler
 Mr. Edward & Mrs. Constance Zimmer
 Mark Zimmer
 Ann Callahan Zimmerman
 Bobbigene Dorsey Zimmerman
 Marilyn Moore Zimmerman
 Claudia Klein Zimmerman
 Nedra Durham Zimmerschied
 Lillian McDonald Zinck
 Greg Zink
 Ruth Brown Zimheld
 Miss Katherine Zotos
 Mary Coombs Zulling

FRIENDS \$99.99 or less

Douglas J. Abel
 Ms. Alice Achelpohl
 Ms. Genevieve B. Adams
 Mergie W. Adams
 Ms. Patti L. Adams
 Ms. Jeanell L. Akers
 Jane L. Albers
 Thorley Alderson
 Ruth A. Alder
 Ms. Betty J. Allan
 Rev. Rudolph S. Allrich
 Dr. & Mrs. Martin Altman
 James R. Ambrose
 Elizabeth M. Ammann
 Joe Ancona
 Ms. Carol L. Anderson
 Ms. Gayle J. Anderson
 Ms. Patricia A. Andrews
 Sally Andrews
 May Applebaum
 Eileen Arand
 Susan J. Arns
 Tammy L. Atha
 Shirley M. Aubin
 John H. Auer
 Robert M. Axetell, Sr.
 L. Rao Ayyagari
 Mark S. Badger
 June Bahr
 P. E. Baker
 Ms. Emily Baldwin
 Dorothy Jane Waters Barklage
 Mr. & Mrs. David K. Barklage
 Kenneth D. Barley
 Robert W. Baronovic
 Henry Baue and Family
 Mark Baue
 Ms. Lula Clayton Beale
 Rev. & Mrs. Donald F. Becker
 Ms. Verma Beckirla and Family
 Hugh R. Bergman
 Groff Bittner
 Polly Black
 Ms. Tracy M. Balzvic
 Mr. M. Blevins
 Janet K. Boehmer
 Mrs. Borg
 Ms. Dee Boschert
 Ms. Joyce Boschert
 Mr. Greg & Mrs. Elizabeth Braswell
 Ms. Norma J. Brehm
 Ms. Sharon J. Brim
 Ronald J. Brockmeyer
 Ms. Deana Brown
 Ms. Lennie Brown
 Ms. Lucelle Brown
 Barbara P. Buchanan
 Heidrun M. Buehner
 Ms. Lillian E. Bull
 Ted Buszta
 Mr. Chris Campbell
 Ms. Ann Canala
 James W. Cannady
 Rev. Evangeline Cannon
 Mrs. Boyd M. Carithers
 Dr. M. Richard Carlin
 Mr. & Mrs. Albert Carpenter
 Dr. F. J. Cerny
 Ms. Martha L. Chambers/Tuesday Morning
 Tennis Group
 Penny Chatterton
 Ms. Virginia Cherry
 Ms. Anne M. Chesnek
 Philip E. Christ
 Ken Christner
 Gerrianna T. Church
 Ms. Adonica Clark
 Charles H. Clark
 Dianna L. Clark
 James L. Clark
 Louise A. Clark
 Lynne M. Clark
 James H. Cleeton
 Frances A. Clemen
 Ms. Kathy L. Clementz
 Mrs. Francis A. Clifford
 Rebecca J. Clift
 Mary Jo Cobb
 Caroline M. Coffey
 Jack Cohen
 Eugene Cokley
 Ms. Mary E. Colaw
 Terri K. Cole
 Kathleen E. Coleman
 Ms. Sue P. Coles

Marilyn A. Collier
 Dixie Collins
 Patsy K. Collins
 George D. Colombaro
 Yvonne C. Colson
 Kathleen Colvin
 Genevieve Comerford
 Ms. Georgette Connelly
 Ms. Dianna Connor
 Ms. Joan M. Conrad
 Lilah M. Contine
 Ms. Dorothy M. Conway
 Ms. Karen F. Cook
 Ms. Barbara J. Cooper
 Ms. Christine Cordes
 Janet H. Cordes
 Charles. D. Comett
 Michael E. Corum
 Edwin M. Costello
 Robert M. Costello
 Mrs. M. Jo Coward
 Shirley M. Cowart
 Carl A. Cowell
 Ms. V. Louise Cropper
 Tom Cross
 Mrs. Jo Curran
 Janina Czyn
 George P. Dames
 Ms. Mary Daniel
 Marcia H. Daues
 Frank Davis
 Bruce A. Kunz
 Ms. Eva R. Dessert
 James A. Diffenderfer
 Darrell G. Diggs
 Ms. Carol Dillon
 Karen L. Divis
 Alan J. Dobbs
 Mr. & Mrs. August Doenges
 Dr. Thomas W. Doherty
 John C. Donnelly
 Dr. Gerald J. Duling
 Mr. & Mrs. L. M. Dyer
 Mr. & Mrs. Le Roy Dysart
 Mr. David & Mrs. Sandra Ebeling
 W. Dean Eckert
 Ms. Brenda M. Eisenbeis
 Wallace L. Eisenbeis
 Arthur Elliott
 Delmar C. Ernge
 Mr. & Mrs. Earl C. Estes
 Dr. J. H. & Mrs. V. Raye Evans, Jr.
 Kazimiera M. Ezvan
 Dale Fehmel
 Ken Fetsch
 J. Emerson Finney
 Ms. Penny Fischer
 Daniel A. Fisher
 Ms. Caroline J. Fisk
 Ms. Mary Jane Flanagan
 Mrs. Marilyn J. Forguer
 Robert Frahm
 Donald R. Francois
 Ms. Melanie M. Franke
 Gary P. Franken
 Mr. Randi Franklin
 Robert O. Franklin
 Gloria D. Frantz
 Larry C. Franzol
 Thomas A. Fraser
 Mr. Francis P. Frazer
 Jeanne Frecks
 Michael W. Fredericksen
 Linda J. Freeman
 Mr. Marvin G. Freeman
 Brent Freiner
 Mr. & Mrs. William C. French, Jr.
 Arthur E. Frenznel
 Larry J. Frey
 Debra L. Friedhoff
 Joyce R. Fritze
 Mr. & Mrs. Frank Fudali
 Carol A. Fuller
 Freida C. Fulmer
 Ms. Glenna Funck
 John A. Gallagher
 Ms. Frances F. Gallicano
 Mrs. Mary G. Gant
 Gail Garey
 Orville Gerken
 Richard G. Gilmore
 Mr. & Mrs. Glen Goellner
 Mr. & Mrs. H. C. Goellner
 Ms. Wilma D. Gordon
 John R. Gorman
 Mr. & Mrs. Herman Griesenbrock, Jr.
 Ms. Kathleen Grimm
 Mr. H. R. & Mrs. Carla Grisham
 Mr. Pat Guasto
 James L. Halsey
 Mr. & Mrs. Charles L. Hamilton
 Dr. W. L. Hamilton
 Ms. Kim A. Hannegan
 Mr. & Mrs. Richard L. Hanson
 Mr. & Mrs. Godfrey Hartnett
 Ms. Carol Lynn Haukap
 Edwin E. Hays
 Mr. & Mrs. Richard E. Hedley
 Luanne K. Heggs
 Ms. Ruth M. Helmich
 Lawrence Hendricks
 Mr. & Mrs. Norbert Herdler
 Mr. DeLaine E. Herl
 Ruth Ann Herrmann
 Dr. Howard W. Heywood
 Marcella Hulse
 Alan J. Hoener
 David L. Hollander
 Jim & Carolyn Hollander
 Carole Honrath
 Ms. Peggy Hood
 Alice Hopkins
 Betty L. Horton
 Ms. Joyce V. Horton
 Howard T. Hoskinson
 Herbert W. Howard
 Barbara Huesemann
 Mr. Richard & Ms. Patricia Hughes
 Hon. William L. Hungate

Paul Huning
 Maxine A. Huster
 Rosanne M. Hutchins
 Ms. Ellen Irons
 Louis W. Isemann
 Mr. Robert & Mrs. Gayle Jacobs
 Donald K. Johnson
 Ms. Gloria Johnson
 Ms. Karen Johnson
 Scott Johnson
 Ms. Niki Juncker
 Linda M. Kalicak
 Arthur L. Kanak
 Larry E. Kane
 Ms. Kathy Keeser
 Deborah M. Kehm
 Everett Keith
 Rev. John V. Kerber
 Ms. Mary Keyes
 Mr. Edwin & Mrs. Patricia B. Kiefner
 Rob A. Kinealy
 John P. King
 Mr. & Mrs. Edward P. Kirgan
 Mrs. Maxine Kleb
 Mr. & Mrs. S. Lee Kling
 Ms. Karen M. Knoblauch
 Lily E. Knopp
 Ms. Veima Koetter
 Frank S. Kostron
 Glenda L. Kramer
 Ms. Adrian D. Krings
 Robert L. Kulp & Family
 Bruce A. Kunz
 Emily Lamaccia
 Miss Lynne M. Landholt
 Kirk C. Landwehrmier
 Keith Lawrence
 Denise M. Lefebvre
 Robert R. Lefebvre
 Mr. & Mrs. Joe Leonard
 Bill Lewis
 Ms. Mary F. Lichliter
 Helen Light
 Dr. & Mrs. Charles M. Linsenmeyer
 William R. Logan
 Mrs. Esther & Miss Arlene Lonning
 Mr. & Mrs. Floyd Mahon
 Jack G. Maize & Family
 The Mangiaracina Family
 Joe Manion
 Dr. David B. Marns
 Ms. Paula Martin
 John H. Maskey
 Joseph G. Mason
 JoAnn Massman
 John B. Masterson
 Joseph C. Masterson
 John W. Mathers
 Ms. Shari L. Matthews
 Bonnie M. Matthews
 Ms. Judy Mattingly
 Ms. Bernita M. Mayfield
 Ms. Nancy M. Maynard
 Ms. Opal McCluskey
 Ms. Barbara McCollum
 Rev. & Mrs. Andrew McGaffin
 Danny McGuire
 Frank B. McMullen, Jr.
 Ms. Valyne Meers
 Robert A. Meyer
 Marie Miller
 Kenneth G. Mitchell
 Ms. Joan Mizis
 Steven Mobley
 J. L. Moellman
 Ms. Jane R. Moerschel
 Ms. Nancy Moll
 Ms. Victoria A. Montavon
 Kenneth D. Morton
 John Mruz
 Robert Mudd
 Robert A. Mueller
 Ms. Rosemary Mueller
 Mr. & Mrs. William Mullins
 Ms. Paula Murray
 Mr. Moheb M. Nasr
 Mr. & Mrs. Richard E. Niehoff
 Benjamin W. Niven
 Mrs. Donnie J. North
 Dr. David H. Norwine
 Ms. Mary Ann Nowak
 Mr. Bob & Mrs. Anne T. O'Connell
 Mr. & Mrs. Alan Ochs
 Mrs. Tamara Oparin
 Mr. Hugh & Mrs. Joanne Orr
 Rev. Mike Owens
 Ms. Julie A. Paine
 Daniel G. Pelikan
 Charles H. Perkins
 William H. Perkinson
 Ms. Cynthia E. Peterson
 Ardeth L. Platt
 Ms. Joyce Pochapsky
 Mrs. Chris M. Podgornik
 Gary Podhorsky
 James Podhorsky
 Vicki A. Poecker
 Ms. Donna Poeling
 Dr. & Mrs. William H. Poggemeier
 Joann Portell
 Mr. Lionell A. Portell
 Patricia R. Porterfield
 Joanne S. Potts
 Naomi A. Potts
 Arlene B. Powell
 Mrs. Nothera Ann Powell
 Glenn Prange
 Cheryl Prante
 Mr. & Mrs. Ray I. Pratt
 Mrs. Bonnie Price
 Ms. Somchai Price
 Ms. Jacqueline D. Prins
 Mr. & Mrs. Ed Pundmann
 Mrs. M. J. Puscian
 Rev. George Quarterman
 Ms. Trudy Jo Rahn
 Ms. Eleanor W. Randall
 Ms. Lucy Rauch
 James J. Raymond
 Mark E. Reed

Lester S. Reid
 Ms. Michelle Reiling
 Donald Reinsfelder
 Marilyn Rieff
 Mr. & Mrs. Charles Roberts, Sr.
 Mr. & Mrs. Charles Roberts, Jr.
 Betty R. Robinson
 Jasper L. Roland
 Tony Ruffkahr & Family
 James C. Ryan
 Richard J. Rydberg D.D.S.
 Ms. Susan E. Sagara
 Mary Salamowicz
 Cleo L. Scheer
 Mr. Louis & Mrs. Anita M. Schilly
 Michael Schkerke
 Matthew S. Schliesman
 Miss Merry Sue Schmidt
 William Schoenhard
 Ms. Dorothy B. Schone
 Ada M. Schweller
 Ms. Carolyn D. Scott
 Ms. Sally A. Sears
 Ms. Joan Sepic-Mizis
 Mr. Walton W. Sexton
 John Shaffer
 Judy Shanahan
 Gary D. Sharpe
 Wesley Shooks
 Ms. Denise Shreves
 Miss Suzanne M. Shroba
 Ms. Rose Siebel
 Carol Sievers
 Mr. Charles & Mrs. Mae Silverberg
 John P. Simburger
 Carla J. Simon
 Jean A. Sitar
 Virginia A. Slingerland
 Robert W. Smigel
 Ann P. Smith
 Donna S. Smith
 Ervin D. Smith
 Geneva R. Smith
 Irene A. Smith
 Mr. Mikel J. Smith
 Peggy R. Smith
 Mr. Robert & Ms. Ruby J. Smith
 Susan Smith
 Ms. Virginia Smith
 Betty N. Smith
 Mr. Jayson Sogg
 Ms. Donna L. Solomon
 Edith B. Sotirocopoulos
 Dr. Paul R. Spahn
 John Spahn
 Mr. August Spalding
 Clara Spalding
 Ms. Teresa A. Spalding
 Mr. R. M. Sparkman
 Jerry M. Sparks
 Sarah J. Spear
 Mrs. Dennis C. Spellman
 Mr. & Mrs. James E. Spencer
 Ms. Pamela J. Spencer
 Warren Spielman
 Bob Sponamore
 Barbara J. Springer
 Mr. & Mrs. George L. Springman
 Norma J. Stahlhuth
 Ms. Virdean M. Stahlschmidt
 Adranna Stapleton
 James K. Starich
 Barbara R. Stark
 Edward Starkey
 Rosemary Steaman
 Libby C. Steimel
 Janet V. Stein
 Mary W. Stein
 Timothy J. Stephan
 Mary Stephenson
 Ms. Judith Stevens
 Mrs. Mary Etta Stevens
 Roy F. Stevens
 Bruce A. Stevenson
 Rebecca J. Stewart
 Rosella L. Stigen
 Rev. Paul R. Stock
 Miss Minnie Stone
 Ms. Florence Stonebraker
 Tom Stoverink
 Ms. Mary Straub
 Ms. Tamara J. Stricker
 Lester L. Stucker
 Ms. Frances Summers
 Jon Summers
 Ralph Summers
 Ralph H. Sundemeier
 Ms. Debra J. Swann
 Rick Swantner
 Ms. Allegra Swingen
 Ms. Bernice Tamuk
 Miss Emily Tamuk
 Mr. Knut Tarnowski
 Aiene C. Tavlin
 Ms. Sarah Taylor
 Ms. Marion Thomas
 Ms. Thelma L. Thomhill
 Ms. Kathryn M. Thomsberry
 George Tilden
 Jim Tiller
 Charles J. Tapek
 Gus Torregrossa
 Mr. & Mrs. Vincent Torregrossa
 Mr. Livingston Townsel
 Ann Travis
 Ms. Guin Tuckett
 Ms. Rita Turnbull
 Thomas Turner
 Richard L. Ulrich
 Leonard S. VanDyke
 Mr. & Mrs. Fred H. Vogt
 Molly Lu Vonland
 Karen Voznak
 Margaret S. Wallace
 Paul Walters
 John H. Warrington
 Melvin Washington
 Ed Watkins
 Dr. Wesley H. Wertz
 Richard Wessels
 John J. Wetter III



Edna Wetterau
 Rev. George R. Wilcox
 Mr. & Mrs. David A. Wilhelm
 James L. Wilhite
 Ann Williams
 Kathy Williams
 James Wilson
 Karl Wilson
 Mary Wilson
 Mr. & Mrs. George Winka
 Karlyn F. Witt
 Gerald E. Wixson
 Mrs. Billie Jean Wood
 Jack S. Wood
 Diane W. Woody
 Robert B. Work
 James W. Woman
 Rob Wren
 Rev. Dale P. Wunderlich
 Mr. & Mrs. Victor Yaffe
 Ms. Mary Yaeager
 Ms. Mary & Ms. Blain Yonker
 Mr. & Mrs. Kevin C. Young
 Zelma L. Young
 John Yurczak
 Ms. Wanita Zumbrennen

FRIENDS

RENAISSANCE ASSOCIATION

\$10,000 or more

Jane A. Crider
 Mr. Raymond &
 Mrs. Grace Harmon
 Mr. & Mrs. Charles G.
 Schott, Jr.
 Mr. & Mrs. John W.
 Tlapek

SIBLEY ASSOCIATION

\$5,000-\$9,999.99

Arthur S. Goodall
 Mr. & Mrs. John C.
 Hannegan
 Mrs. Sidney W. Souers
 Dr. & Mrs. James I.
 Spainhower
 Dr. Kenneth W.
 Thompson

RENAISSANCE PATRONS

\$2,000-\$4,999.99

Mr. & Mrs. David E.
 Babcock
 Mr. & Mrs. Harvey A.
 Friedman
 Mr. & Mrs. Thomas
 Gossage
 Mr. & Mrs. Keith W.
 Hazelwood
 Mr. & Mrs. Robert F.
 Hyland
 Mr. & Mrs. Robert Kaplan
 Mr. & Mrs. Robert
 McKelvey
 Mr. & Mrs. Jefferson
 Miller
 Mr. & Mrs. Ronald Ohmes
 Mr. & Mrs. J. Paul
 Ohrman
 George B. Ross
 Robert W. Sullentrup
 Mrs. Horton Watkins
 Mr. & Mrs. Clayton E.
 Wilhite
 Mr. & Mrs. John D. Wolf

BOARD OF ASSOCIATES

\$1,200-\$1,999.99

Mr. Kenneth R. & Mrs. Mary
 Lou Ahmann
 Jill Baue
 Dr. & Mrs. Robert J. Fleming
 Fritzie Knoblauch
 Mr. & Mrs. Walter L.
 Metcalfe, Jr.
 Mr. Paul L. & Mrs. Nancy
 Polette

Dr. Arthur E. Prell
 Henry Rauch
 Gary Shaw
 Dr. & Mrs. Earl J. Wipfler

PRESIDENT'S CLUB

\$500-\$1,199.99

John Bornmann
 Mr. & Mrs. George W. Brown
 William R. Cady
 Christine C. Conover
 Jeanne Donovan
 Mr. & Mrs. Henry Elmendorf
 Alfred Fleishman
 Dr. Gene Henderson
 Dr. Esther L. Johnson
 Dr. & Mrs. Robert Kingsbury
 Dr. & Mrs. Justus P.
 Kretzmann
 John Latshaw
 Paul Londe
 Mr. & Mrs. James Magee
 Mr. & Mrs. John Nichols
 Mr. & Mrs. Bill Park
 Mr. Boyle & Mrs. Nancy
 Rodes
 Jerry Scheidegger
 Lillian E. Trump

GOLD LINKS CLUB

\$300-\$499.99

Mr. & Mrs. Raymond E. Botz
 Dr. & Mrs. Eugene J. Canty
 Jay B. Dillingham
 Mark T. Duncan
 Carmine V. Ficocelli
 Mr. & Mrs. James M. Fitz
 Mr. & Mrs. Thomas L. Gipson
 William B. Hecht
 Robert L. Hulett
 Kenneth Ingram
 Mr. Daniel N. & Mrs. Marilyn Keck
 Mr. & Mrs. Stanley Kolker
 Hans Levi
 Ms. Mary Martin
 Burr W. Miller
 I. E. Millstone
 Mr. & Mrs. Kenneth W. Musbach
 Catherine O. Pundmann
 Mr. & Mrs. Jerry Ruffahr
 Mr. & Mrs. Randy Wallick
 John H. Wehmer
 Oliver Wilke

FOUNDER'S CLUB

\$160-\$299.99

Joseph F. Ackerman III
 Charles Anderson
 Ms. Daryl Anderson
 Wayne Balmer
 Richard L. Batttram
 Victor J. Beck
 Doug Boschert
 Ms. Mary T. Bright
 Ms. Sue Brown
 Solon Chervitz
 Ms. Debra L. Coats
 Dr. Michael Conoyer
 Michael J. Curry, M.D.
 Ms. Janice Czaplá
 Mr. & Mrs. A. Roger Deppe
 Mr. & Mrs. Bruce Edler
 Carol S. Fellows
 Ms. Norma Jean Fields
 Richard R. Frame / Mississippi
 Investment Inc.
 Eugene Goldstein
 Ms. Louise G. Graham
 Mr. Charles & Mrs. Dorothy Hafer
 Thomas Hedgecock
 Rev. & Mrs. V. Paul Heine
 Ms. Darlene Jemison
 Theodore A. Kienstra
 Dr. Robert King
 Eugene J. Kirk
 Mr. & Mrs. Charles L. Kopetzky
 Rev. Robert W. Kroening
 Mr. & Mrs. Richard R. Lance
 Ramona Lane
 Mr. & Mrs. James C. Maurer
 Ms. Shirley McCormick
 Ivan A. McReynolds
 Mr. Chris and Mrs. Phyllis Morris
 Marilyn Morris
 Edwin M. Olschansky
 Larry Pressley
 Dr. Alfred Schuetz
 Joseph H. Schweich
 William Sullivan
 Mr. & Mrs. James Swift
 Mr. Myron & Dr. Arlene V. Taich
 Mr. Arthur & Ms. Jean A. Taylor
 Mr. & Mrs. Lee White
 Jacob H. Wolf, Jr.

CENTURY CLUB

\$100-\$159.99

Melinda J. Adams
 Jonathan D. Allen
 Robert R. Allen
 Mr. & Mrs. Jorge Aquino
 Omer H. Avery
 Dr. & Mrs. Howard Barnett
 Mr. & Mrs. Henry L. Bartels
 Rev. & Mrs. Rudolph Beard
 Mr. & Mrs. Stephen Blackhurst
 William E. Blades
 Carol Boerding
 Patrick H. Brady
 Thomas Brown & Motivational
 Concepts
 Mr. & Mrs. Gary D. Bubenzer
 Ms. Joyce A. Cappon
 Dr. & Mrs. Henry W. Clever
 Rev. & Mrs. Robert R. Collins
 Alwin "Tub" Diefenthaler
 Donald F. Dilly
 Theron R. Dosch
 Vivian K. Downs
 Walter R. Dreier
 Jean W. Droste
 Frederick T. Dyer
 David B. Flavan III
 Nancy Fleming
 Mr. John & Mrs. Mildred Frank
 Leland D. Gillette
 Sanford Goffstein
 Dr. Edith E. Graber
 John Grassilli
 Werner F. Grunbaum
 Mr. & Mrs. James Hafer
 Mr. & Mrs. C. R. Hale
 Dr. & Mrs. R. E. Hammes
 Mr. & Mrs. Frank Harkins
 Wesley E. Hedges
 M. Henry Hess
 Dr. Leopold Hofstatter
 George Holtgrewe
 Mr. & Mrs. David L. Kirkland
 Mrs. Harry W. Kroeger
 Mr. & Mrs. Katsumi Kudo
 Mr. Kraig Kurtz
 John V. Lanternam
 Ms. Marilyn Leach
 Hettie Magee
 Mr. M. J. Mathis
 Ms. Tracy L. Mathis
 Rev. & Mrs. Robert McGruther
 Robert R. Meers
 Mr. & Mrs. Donald Meyer
 Harold B. Moore
 James L. Moore
 Ms. Lynn Moore
 Mr. & Mrs. David G. Muckerman
 Carol Mueller
 Rev. Earl E. Nance
 Barbara Jean Okun
 Dr. & Mrs. Richard O. Olson
 Randolph E. Puchta
 Ms. Emma Purnell
 Vona M. Quackenbush
 Mr. & Mrs. Milton Rehg
 Richard Rickert
 Frank C. Rittenhouse
 Dr. & Mrs. Paul H. Rother
 Rabbi Alvan D. Rubin
 Mr. & Mrs. Wilbert Schmidt, Jr.
 Ms. Kathleen Schneider
 Mr. & Mrs. Allen Schwab
 Mr. & Mrs. Albert L.
 Schweitzer, Jr.
 Raymond Scupin
 Dave Sherman
 Doyle W. Shockley
 Mr. & Mrs. Joseph Shroba
 Mr. & Mrs. Louis H. Siemer
 David E. Skiles
 Donald J. Smith
 Dominic Soda
 Frank Spinner
 Gladys T. Stockstrom
 Ms. Frieda J. Stoerker
 Ms. Mary Talbot
 Mr. & Mrs. Edward Tokas
 Mr. & Mrs. Norbert Wapelhorst
 Mr. & Mrs. Richard Ward
 Mr. & Mrs. Melvin G. Wetter
 Carol Whitman
 Byron C. Wlswell
 Mr. & Mrs. Richard Yalem
 Ms. Toni Yeakey
 Ms. Patricia A. Young
 Stanley E. Zager

Matching Gift Companies

1st National Bank of Chicago
 The 3M Company
 ACF Foundation Inc.
 Alcoa Foundation
 American Home Products
 Amoco Foundation Inc.
 Anheuser-Busch Charitable
 Trust
 AT&T Foundation
 Atlantic Richfield Foundation
 Bankers Life Co.
 Beech Aircraft Foundation
 B. F. Goodrich
 Brunswick Foundation, Inc.
 Carolina Power & Light
 Caterpillar Foundation
 CBS, Inc.
 Chemical Testing Inc.
 Chubb and Son, Inc.
 Citibank, N.A.

Clorox Foundation
 Combustion Engineering
 Compton Foundation, Inc.
 Conoco Inc.
 Continental Telecom Inc.
 Cooper Industries
 CPC North America
 Deluxe Check Printers
 Foundation
 Dun & Bradstreet Corp.
 Foundation

E. F. Hutton & Company Inc.
 Eli Lilly & Company
 Emerson Electric Company
 Equitable Life
 Exxon Education Foundation
 Fiduciary Trust Company
 Ford Motor Company Fund
 General Dynamics Corp.
 General Electric Foundation
 General Mills Foundation
 Hallmark Cards Inc.
 Harris Foundation
 HBE Company
 HCA Foundation
 Hewlett Packard
 IBM Corporation
 J. Eckerd Corp.
 J.C. Penney Company, Inc.
 Joseph E. Seagram & Sons
 JSJ Corporation
 Laclede Gas Company

Mallinckrodt Fund, Inc.
 Martin Marietta Foundation
 Massachusetts Mutual Life
 Insurance
 The May Stores Foundation
 McDonnell Douglas Foundation
 Merrill Lynch
 Metropolitan Life Foundation
 Middle South Services
 Minnesota Mining Foundation
 Mobil Foundation, Inc.
 Monsanto Fund
 Northwestern Bell Foundation
 Olin Corporation Trust
 People's Bank
 Pfizer Inc.
 Philip Morris Inc.
 Phillips Petroleum Foundation
 Procter & Gamble Fund
 Ralston Purina Trust Foundation
 RCA
 Rohm & Haas Company
 Ryder System, Inc.

Shaklee Corporation
 South-Western Publishing
 Southeast Bank, N.A.
 Southwestern Bell Telephone
 Foundation
 St. Charles Orthopaedic
 State Farm Companies
 Foundation
 Texaco Philanthropic
 Foundation
 Time Inc.
 Times-Mirror Company
 TPF & C, Inc.
 Transamerica Corp.
 Trust Company of Georgia
 TRW Foundation
 Union Electric Trust Company
 United Technologies
 Varian
 VF Corporation

GIFTS-IN-KIND

Mark Baue
 Boccacio's
 Bryan, Cave, McPheeters
 & McRoberts / Walter
 Metcalfe, Jr.
 Columbus Dental
 Janet H. Cordes
 D'Arcy Masius Benton and
 Bowles
 Equitable Real Estate
 The Forsythe Group / David
 Wilhelm
 Thomas Gossage
 Ms. Kathleen Grimm
 Holiday Inn-St. Peters
 Keeler Morris Printing
 Hans Levi
 Phyllis Morris
 Rick Swantner
 Thoele Oil Co.
 Thompson & Mitchell / John
 Hannegan
 Jim Tiller
 Wetterau Inc.

AMBASSADORS

These extraordinary
 Lindenwood College
 volunteers serve as
 ambassadors on
 various campaigns
 and Renaissance ef-
 forts throughout the
 year. On behalf of the
 college, we commend
 their outstanding
 performances in sup-
 port of Lindenwood.

The ambassadors
 listed are not cur-
 rently members of
 one of the Lindenwood
 College boards.

Mary Lou Ahmann
 Jamye Allen
 Joe Ancona
 Gordon Atkins
 Howard Barnett
 Dan R. Bishop
 Ray Botz
 Barbara Broadfoot
 Mayor Tom Brown
 Charles Bruere
 Ms. Penny Myers Bryant
 Bernie Buckman

Dennis Cavanaugh
 Joan Childress
 Florence Crockett
 Bob Currie
 Dr. Michael Curry
 Joe Daues
 Glen DeWees
 Steve Dieringer
 Nancy Dietz
 Jean Droste
 Carl Emerling, Jr.
 Cynthia Essenpreis

Lori Fairchild
 Dr. Robert Fleming
 Barry Freese
 Ray Fricke
 Charlotte Gilliom
 Bill Green
 David Gulick
 Geary Hagen
 Barbara Hamill
 Jim Hodges
 Bernice Hugeback
 Joe H. Hunt

Robert Jacobs
 Darlene Jemison
 Dr. Esther Johnson
 J.T. Johnston
 Ms. Kim Jones
 Dr. Robert Kingsbury
 Otto Klingler
 Fritzie Knoblauch
 Ed Layton
 Jeffrey Leeka
 Stephen E. Littlejohn
 Gary Loeffler
 Ms. Rita Luddon
 Judy Ludwig

Rev. Richard Maddox
 James Maurer
 Donald Meyer
 Ken Mihill
 Ms. Nancy Miller
 Ms. Rhonda Miller
 Ms. Terry Miller
 Jeanne Mudd
 Ms. Ruth Noblitt
 Judy Peters
 Ray Pickett
 Ed Pundmann

James Rau
 Dr. Paul Rother
 Larry Sackman
 Ron Saettele
 Hershel Sams
 Sally Schaefer
 Jerry Scheidegger
 Wilbert Schmidt, Jr.
 Ruth Staggemeier
 Ms. Jeri Stine
 Ms. Carla Stuhler
 Robert Sullentrup
 Edward Sylvia
 Susan Sylvia

C. William Taylor
 Jack Taylor
 Glenda Terschluse
 Roy Thoele
 George Tilden
 Randy Wallick
 Kay Watts
 Walter Weik
 Norma Wilder
 Bud Wilke
 Alan Wolfgang
 Frank Wollrab
 Fred Woody
 Richard Yalem
 Ruth Zeisler

Names listed
 here are for 1986-
 87 contributions
 to Lindenwood
 College and are
 based on dona-
 tions received
 from July 1, 1986,
 through June 30,
 1987. Due to oc-
 casional computer
 or human error,
 we apologize for
 any name omis-
 sion or misspel-
 ling. Please send
 any corrections to
 the Development
 Office, Linden-
 wood College,
 St. Charles, MO
 63301-1695.

Lindenwood
 College thanks
 each and every-
 one of you, and
 hopes you will
 continue to contri-
 bute your ideas
 and support to the
 college.



Winter Bookstore Bargains



Hooded Sweat Shirt \$21.95
Bundle up in a cozy hooded sweat shirt perfect for relaxing after a hard day. Made of 50% Acrilan & 50% Cotton.

Alumni T-Shirt \$ 7.95
Gold shirt with college crest. 50% Cotton & 50% Polyester.

Wooden College Mug \$17.95
Simmons Wood College Mug with raised Lindenwood seal and wreath.

Wine Carafe \$ 7.50
Heavy-duty glass with the college seal in colors on a 1-litre bottle.

The following pottery items, made by Bunting, are all fine quality ceramics with the college logo. They are kiln-fired for permanence and beauty and hand crafted with pride.

No-Spill Mug	\$ 9.95
Coffee Mug with Handle	10.95
5-inch Ceramic Bell	9.95
8½" Vase	8.95
Irish Mug	13.95
Deluxe Coffee Mug	13.95
Coffee Mug	6.95

When ordering, please supply name, address and zip code. We will accept personal checks, money orders, or VISA or MasterCard. If using a credit card, please be sure to supply complete number and expiration date. Orders may be placed by phone by calling (314)949-2000, Ext. 300 or by mailing to Lindenwood College, Attn. Bookstore, St. Charles, MO 63301.



They Did It Then; We Can Do It Now!



Col. Butler



Margaret Butler

An Appeal To Join the Butler Society

During the 1930s and '40s, Lindenwood was able to build what many referred to as the "Wellesley of the West", primarily through the generosity of Col. James G. Butler and his wife, Margaret Leggat Butler. The gifts from the Butler family totaled nearly \$4 million a few decades ago — a sum that would be equivalent to more than \$25 million in today's economy.

During the Butlers' lifetime, Ayres, Butler and Nicolls halls were built. Funds from the Butler estate led to the construction of Roemer and Irwin halls, Butler Library, the Gables and Eastlick Residence.

Imagine what Lindenwood College could do today with individuals like the Butlers — individuals with vision who would have the personal satisfaction of having a major influence upon the destiny of Lindenwood College.

Today, we don't have Col. James and Margaret Butler, but we do have the support of thousands of

individuals who share Lindenwood's vision — alumni, corporations, foundations, business and industry, churches, the community, and friends and supporters!

We can do it today! All it takes is for a few of these individuals to step forward and cast their vote for the future of Lindenwood by joining the Butler Society.

The Butler Society is Lindenwood's premiere donor group. Alumni, friends and supporters of Lindenwood can join this prestigious and important group by one of the following:

- Making a cash gift of at least \$25,000, which can be paid in installments over a two-year period.
- Make a planned gift that directly will benefit the college with at least \$25,000.

Planned gifts can be a premium-paid life insurance policy in which Lindenwood is named as a beneficiary for at least \$25,000; real estate, securities or personal property that has a current appraisal value of at least

\$25,000; the inclusion of Lindenwood College in a will that contains a minimum bequest of \$25,000; or the purchase of an annuity, or the creation of a living trust, a charitable trust or other gift instrument that provides the college with a minimum of \$25,000.

Those who become members of the Butler Society may designate the specific purpose for which their gift is to be used, such as for books for Butler Library, endowment funds, scholarships for needy students, or they may instruct college officials to use the funds in an area of greatest need, such as campus improvements, building renovation and repair or facilities development.

We invite you to share in the future of Lindenwood College by finding out more about the Butler Society. Write or call James D. Thompson, executive director of development, at Lindenwood College's Development Office today — (314)949-2000, extension #338.