

# Lindenwood ledger

December 1984

## KCLC Sponsors Drive for Power Increase

By Lisa Olliges

"Grow with us!" That was the theme of the KCLC fundraiser which 'kicked-off' its funding drive on October 29. Due to a proposal recently approved by the Federal Communications Commission (FCC), KCLC is boosting its broadcasting power from 1500 to 25,740 watts. This power increase will make it possible for KCLC to be heard throughout the St. Louis area and surrounding counties of St. Charles.

More watts mean more sound. The power increase to 25,740 watts will mean a stronger signal for KCLC listeners. It will also prevent a fading signal for those listening as they drive to and from work.

The equipment necessary to make the power increase a reality will cost approximately \$100,000. This includes the purchase of a new transmitter, antenna and other equipment.

KCLC raised \$12,000 during last year's fundraiser and the goal for this year's fundraising campaign was an additional \$10,000. Those who pledged \$30 to the fundraiser received a KCLC coffee mug. All pledges also received a copy of THE CURRENT, KCLC's newsletter. Pledges to the fundraiser were tax deductible.

KCLC is a public radio station and is



Photo by Steve Truesdell

Lindenwood freshman Bill Ott works the pledge lines for KCLC during its fundraiser, October 29 - November 4.

therefore listener-supported. It is from listener's contributions that KCLC provides quality programming.

The radio station also is a learning environment for approximately 100 students, which includes mass communications majors at Lindenwood as well as others inter-

ested in radio as a hobby. KCLC allows students to receive professional training and experience while attending college.

KCLC is located at 89.1 MHz on the FM dial and operates daily from 6 a.m. to midnight.

## Proposed Changes in Communications

By Keith Stone

Approximately 160 Lindenwood communications majors could be affected if the proposed requirement changes are voted into effect next year. "We talked to professionals and we know what they (the students) need," stated Jean Fields, head of the communications department.

Until recently, only three communi-

cations majors were offered at Lindenwood: general, broadcasting and public relations. Now Lindenwood, if approved, will be offering a corporate and business communications major. It will have more management and marketing courses offered along with communications courses.

Name and content of numerous courses throughout the communications major would be altered. For example, course

name changes would include: television production to video production and mass media would be changed to communication ethics. Communications people are no longer locked into broadcasting," said Fields.

Information analysts also are needed in today's communications industries. To help

See COMMUNICATIONS, page 3.



# Enrollment Shows Slight Decrease

By Mark McColl

Final enrollment figures are in for Lindenwood College for the fall, 1984 semester. Although enrollment is slightly down from this time last year, Dar Eaton, head of registration for Lindenwood, is full of optimism. "I expect to see an increase," Eaton said, "I think our marketing is better, our programs are inviting and the admissions people are doing a better job." Eaton has been at Lindenwood for eight years and began serving as head of registration in March, 1983.

Eaton stated that in the past, people may have been deterred by the college's previous financial difficulties, but, she sees that now turning around. "There was a lot

of confusion about the status of the college, as well as a lot of publicity about the college's financial difficulties," she said "I believe that the feeling is apparent that there has been a turn about."

According to enrollment figures, enrollment is down approximately 90 students from last year at this time. In 1983, there were approximately 1,850 students enrolled at Lindenwood compared to 1,755 students this year. Eaton attributes the slight drop to the loss of students from General Motors Corp. in Wentzville who were on strike at the time the current semester began, and some to a drop in enrollment at Deaconess Hospital in St. Louis.

About one-third of the Lindenwood student population is comprised of tradition-

al-age students, or students who are 18-22 years of age. Of these students, there are 234 living on campus. Eaton feels that Lindenwood has a lot to offer these students. "I think that at a large state school, everyone is afraid of becoming a number. At Lindenwood, we're people, and we're small enough to cater to individual needs," she said.

Eaton sees the work being done by the admissions people as positive. "I think that the personal contact being done by the admissions people is great. People need to come to Lindenwood, see Lindenwood and get the feeling. People need to see the positive feelings at Lindenwood," she said.

## LSG Introduces New Programs, Activities

By Doug Hoggatt

The 1984-85 academic school year marked the beginning of the new Lindenwood Student Government (LSG). In comparison to Lindenwood governments of the past, the LSG is much larger, which allows it to represent its various constituents more effectively. This is due, in part, to a new constitution and the administration of a students activities fee.

The new LSG constitution was written last year by a committee of students in close cooperation with Dean of College Life, Allen Schwab. Committee meetings, open to the student body, were held throughout the year in order to construct the new constitution. After the final draft was completed last spring, an open election was held and the new LSG constitution was ratified by a vote of 137-2.

The LSG, which operates according to guidelines established in its constitution, is divided into three sections: the Executive Council, the LSG Senate and the LSG Committees. Each branch works closely together in the decision-making process of LSG policies which are vital to student interest.

The executive council consists of elected officials who serve in upper-administrative positions such as president or vice-president. Its role is to maintain organization by supervising all LSG activities and functions.

Elected representatives from various constituencies (i.e. resident students, LCIE students, etc.), and officially recognized

student organizations make up the LSG senate. The senate votes on all issues proposed by the LSG committees.

The committees are comprised of members from both the executive council and the senate. All resolutions presented on the senate floor originate from one of eight existing committees, which include the budget committee and student activities committee. Each committee has the power to appoint students, whether or not they are members of the LSG, to serve on various subcommittees.

The LSG serves as the official representative of the entire Lindenwood student body and conveys student interests and concerns to Lindenwood faculty, staff, the Board of Directors and Overseers and the general public.

According to LSG Vice-President Vic Avellino, another major role of the LSG is "to effectively administrate the money from the student activities fee." Along with the ratification of the LSG constitution, the student activities fee was implemented, which calls for each student to pay \$40 per semester in addition to the cost of tuition. These funds go directly to the LSG treasury and are allocated to different areas of the college community in accordance with an operating budget.

The major advantage of the students activities fee is that it gives the LSG complete power in determining how student government funds are to be spent. Only the LSG, as authorized by its constitution, can appropriate funds from the treasury. In

the past, the treasury's budget came directly from Lindenwood College's operating funds. As a result, a staff member, serving as the students activities director, was the key factor in deciding how funds were appropriated. Under the current LSG constitution, the LSG is now wholly responsible for the administration of money from the student activities fee, thus giving the student body an equally-important role in the decision-making process.

"We (the LSG), have the money to spend, but it's the students who should tell us how they want it spent," said LSG Treasurer Gary Winschel, "They can do that by attending LSG meetings and becoming actively involved in different subcommittees."

COMMUNICATIONS, from page 1.

communications students become information analysts, Lindenwood is proposing to add three important courses to its curriculum. Information systems would be a computer science class which would evolve around the communications industry. Another proposed class is an accounting course which would center upon the use of accounting in the communications field. One final proposed class would be designed for seniors only and it would discuss happenings in the area of communications.

Communications is a very important part of each of our lives. The Lindenwood Communications department hopes these proposals turn into realities.

# Fleming Hopes To Strengthen Music Department

By Wilma Henrichsen

When looking at Nancy P. Fleming, one would never guess that she was born in Puerto Rico and lived the first 12 years of her life there.

Fleming, assistant professor of music at Lindenwood College, resided in Puerto Rico because of her father's employment transfer to a branch office of Chase Manhattan Bank in that country.

Fleming received a bachelor's of arts degree from Mount Holyoke College in Massachusetts and earned a master's degree in choral conducting from Westminster Choral College, Princeton, N.J. She was working on a doctorate degree at the University of Illinois-Champaign, when she was offered her current position at Lindenwood.

Fleming said that she took the job at Lindenwood because it offered a unique opportunity to mold and build the department.

She has been at Lindenwood for almost two years. In the brief time she has been at the college, Fleming has developed many new programs. She reorganized the Women's Ensemble last year and is currently planning a spring, 1985 tour of Missouri with the Chamber Singers.

Fleming's goals are to have more music majors and build the music department to the strength it once had.

Fleming, 34, resides in St. Peters, MO with her husband Ansley, and two cats. She enjoys jogging, swimming, baking and eating bread, reading and movies.



Nancy Fleming, assistant professor of music at Lindenwood.

## Annual Madrigal Dinners Performances

By Wilma Henrichsen

An evening filled with music, a delicious meal, entertainment and a warm, friendly atmosphere is what you'll find at Lindenwood College when it presents its annual Madrigal Dinners.

The Madrigal Dinners will be held in the Memorial Arts Building on the Lindenwood College campus in St. Charles. The dinners are scheduled on December 7, 8, 9, 14 and 15, and begin at 7 p.m.

At these dinners, you will be greeted at the door by the "Lord," Joe Arnold and the "Lady," Laura Muckerman. The hall will be decorated with holiday greenery, red ribbons and candles. The lord and lady will then escort you to the parlor, where everyone will drink a toast from the wassail bowl. Wassail is a traditional drink comprised of hot cider, liquor, apples and sugar.

The toasts are followed by the appearance of the Lindenwood Chamber Singers who will perform madrigal songs.

Following this entertainment, guests will then be escorted upstairs for a feast of roast beef, yorkshire and fig puddings. The singing will continue throughout the dinner.

The remainder of the evening will be

filled with the singing of traditional Christmas carols, madrigal pieces and entertainment provided by a jester. There also will be harpsichord music and a trio of recorder players. A candlelight recession to "Silent Night" signals the end of the evening of entertainment.

If you would like to spend a festive evening in Tudor England, make your reservations for the Madrigal Dinners. Tickets are priced at \$22 per person and can be purchased by calling the Lindenwood theatre department at 946-6912, ext. 218 or the box office at 946-2004.

## More Power To KCLC

By Fernando Feito

A total of \$100,000 is needed by August 25, 1985, in order to increase the power of KCLC to 25,740 watts. Currently, the station is operating at 1,500 watts. Due to a recent proposal approved by the Federal Communications Commission (FCC), KCLC was granted the power increase.

A construction permit which expires August 25, 1985, was issued to KCLC for the installation of a new transmitter, a higher tower and the upgrading of its equipment before the permit expires. The new transmitter will increase the power to help

reach a larger audience. Presently, the station reaches approximately 50,000 listeners in the surrounding St. Charles area.

KCLC raised \$9,000 in its fundraiser held October 29–November 4. On-air appeals were made twice each hour to KCLC listeners. In order to help motivate listeners to donate, the station offered KCLC coffee mugs to those who donated over \$30 and subscriptions to "The Current," KCLC quarterly newsletter also were offered. During this fundraiser, KCLC also applied for federal grants and made appeals to local businesses. The station sponsored a bluegrass festival which raised \$1,500 and local food

See KCLC, page 8.

# New Club Created at Lindenwood

By Tim Mahoney

Circle K, a college-level organization sponsored by the Kiwanis Club, has created a club on the Lindenwood campus.

Circle K is sponsored in cooperation with college officials and a local Kiwanis club. Kiwanis Club's are comprised of leading business and professional men in the community which pay an annual fee of \$145 in order to sponsor a Circle K club. In addition, many sponsoring Kiwanis Clubs offer financial assistance to Circle K toward attendance at conventions and special projects.

The theme of Circle K, along with specific programs for service on the college level, is to "achieve unity through service." The clubs emphasize projects with "the family in touch, turmoil or transition."

Lindenwood College began a Circle K club in spring, 1984. It hasn't had a similar club on the campus since the early 70s.

The club idea was initiated when James Thompson, a member of the Kiwanis Club and major funds coordinator at Lindenwood, asked Lindenwood College student Cindy Schiermeier if she could find at least 15 people interested in joining this club. Schiermeier organized the members and was elected president of Circle K in

May, 1984. The clubs' actual charter date was September 20, 1984. "I think the students need and want an organization that is not only a service organization, but also offers professional and business contacts," Schiermeier said.

The basic function of Circle K is to be a service organization for the community and campus. This year, Circle K donated funds to the Lindenwood cheerleaders for homecoming decorations and to the James McGee Scholarship Fund. Another function of Circle K is to inform students by getting career-oriented speakers to lecture on campus and also offer business and professional contacts for students. Circle K also toured the D'Arcy-MacManus & Masius, Inc. advertising agency December 6.

There are currently 27 members in Circle K at Lindenwood College. The only other Circle K club in the area is at Mera-mec Community College, Kirkwood. Internationally, there are 15,000 members in seven countries. "Circle K is the world's largest collegiate service organization," said Schiermeier.

To become a member of Circle K at Lindenwood, attend a Circle K meeting or talk with one of the officers. Officers at Lin-

By Tim Mahoney

Circle K, a Kiwanis-sponsored organization on the Lindenwood College campus, will be giving a \$1000 Circle K Scholarship next year. The scholarship will combine \$500 from the Kiwanis Club and \$500 from the Lindenwood departmental scholarship.

Cindy Schiermeier, current president of Circle K at Lindenwood, was the first recipient of the Circle K Scholarship because she helped organize the club on the Lindenwood campus. "Next year they hope to have a scholarship for every officer of Circle K," Schiermeier said. Schiermeier added that any Circle K member can be elected a Circle K officer.

If you are interested in joining Circle K, please contact Schiermeier or Circle K adviser, James Thompson at 946-6912, extension 320.

denwood's Circle K include Schiermeier, president; Glen Bahr, vice-president; Abby Tuttle, secretary; Chrystal Chestner, treasurer and Thompson, adviser. Dues for Circle K are \$12 per year.



Photo by Steve Truesdell

If you can't "bear" studying for anymore finals, take a break at the St. Louis Zoo!

## Yearbooks Available

By Ann West

The Lindenwood Student Government (LSG) is producing a yearbook for the 1984-85 school year. The Herff Jones Co. is publishing the book and preliminary production has already begun.

Cost of the yearbook is \$20. It will be on sale in Ayres Cafeteria during lunch or students may send a check to Box 542 and a receipt will be returned. In order to recover yearbook production costs, a total of 250 copies must be sold. The deadline to order a yearbook is March 1, 1985.

"Renaissance" is the theme of this year's yearbook. The cover design was created by Jordan Morgarman.

Plans for the yearbook include a projected 166 total pages, with eight pages of color. The pictures will include the homecoming dance and dorm parties. The more yearbooks that are sold, the more pages can be added.

Lisa Olliges and Sam Reading are co-

See YEARBOOKS, page 8.

# The '84 Semester



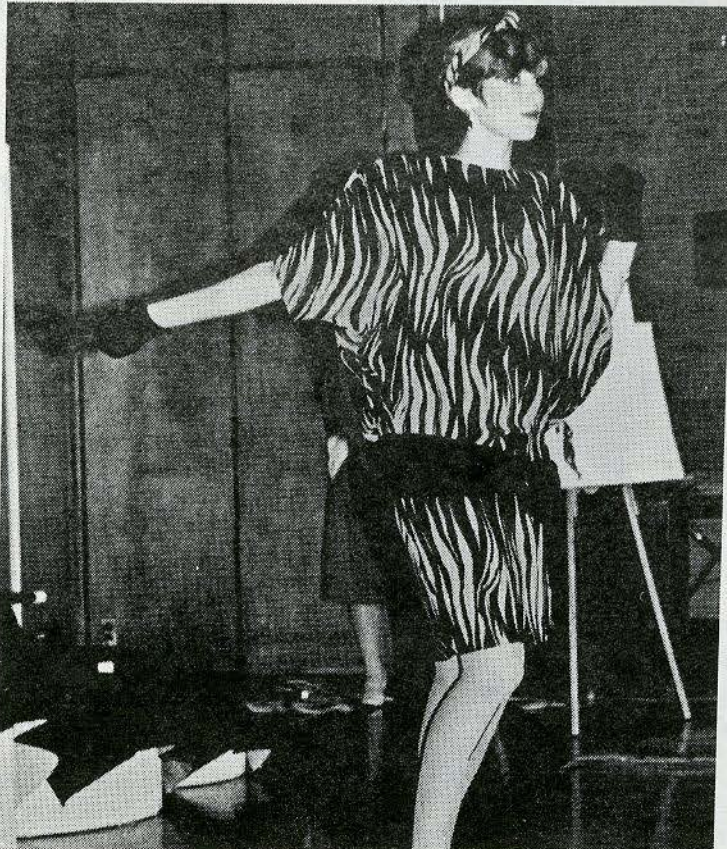
Denise Hager, a Lindenwood student from Canada, discovers the latest American craze: used "C" clothing.

Photo by Steve Truesdell



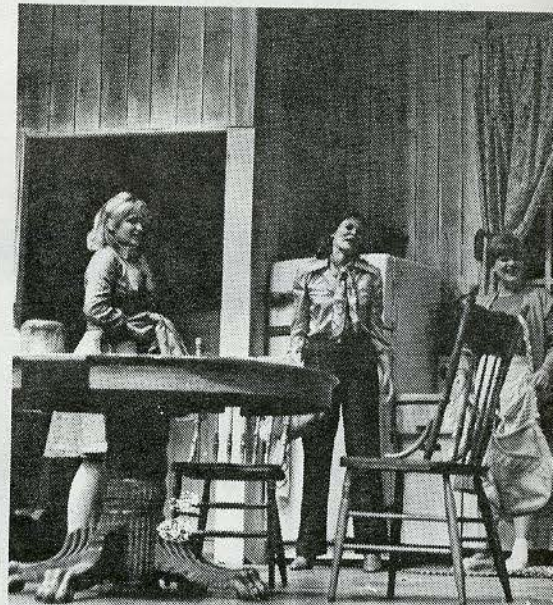
Lindenwood alumni enjoy the Niccolls Student Center and talk over "old times" on Alumni Weekend, October 5-7.

Photo by Steve Truesdell



Model Denise Hager shows off clothing chosen by the Lindenwood Fashion Marketing Club at its fashion show scheduled October 6. The show was only one of the scheduled events during Lindenwood's Alumni Weekend and Collegefest.

Photo by David Hanlon



"Crimes of the Heart" are discussed by cast members in same name. (Pictured from left to right: Cynthia Huse Albert.) The production ran October 4-6 and 12-13 in L.

# At A Glance

---

---



Photo by Paul Butts  
the Lindenwood Theatre production of the  
Claudia Stedelin, Marsha Parker and Lisa  
denwood's Jelkyl Theatre.

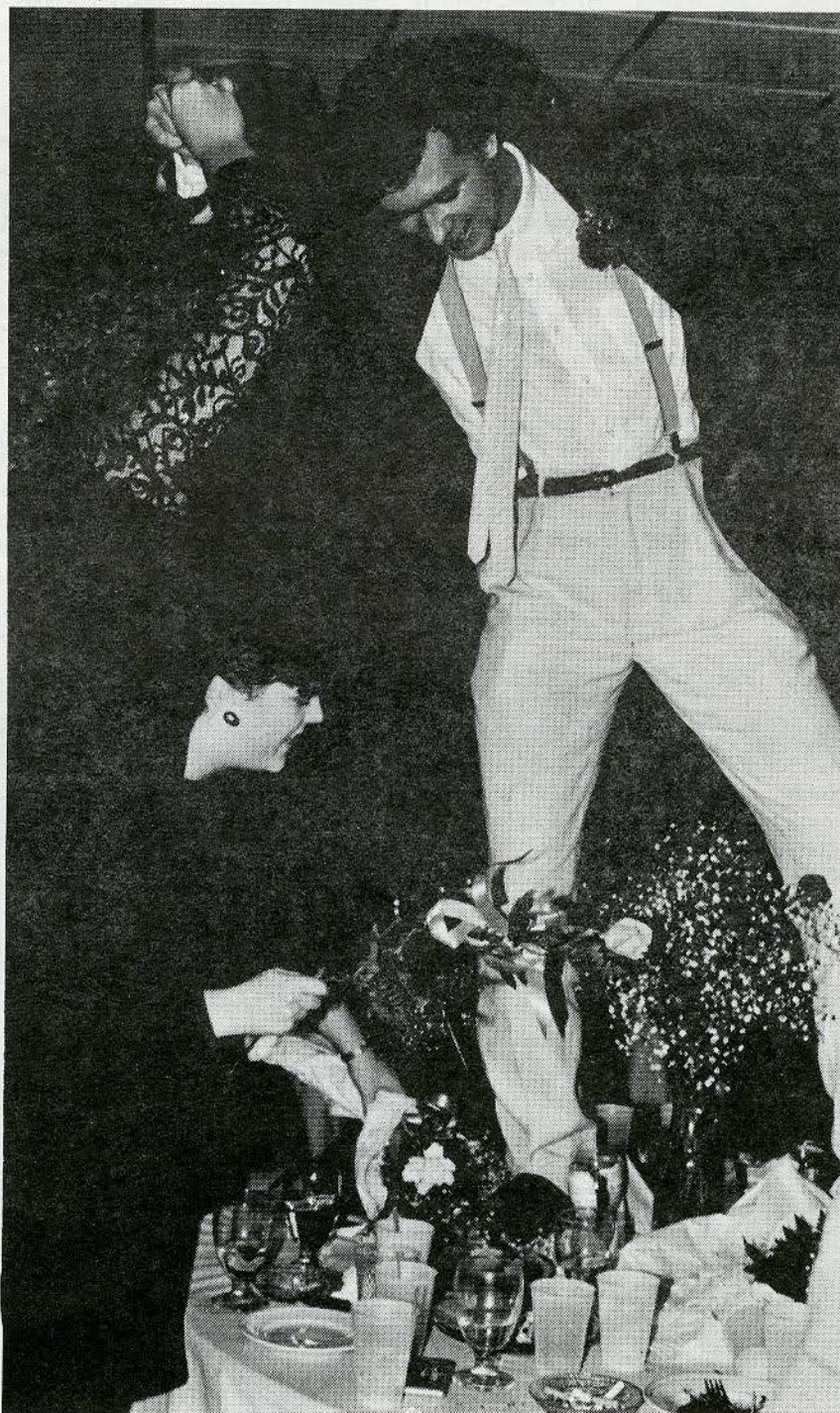


Photo by Paul Butts  
Glen Bahr finds refuge from the crowded dance floor at the Homecoming Dance, October 6.

# 'Peter Pan' at Jelkyl Theatre

By Mary Graveman

"Academically, performance-wise, you can't do the same thing every year. You need a change," said Charnan Kenst, secretary for the Lindenwood theatre department, concerning the production of "Peter Pan" instead of "A Christmas Carol" this Christmas.

Since 1977, Wesley Van Tassel, former chairman of Lindenwood's theatre department, scheduled "A Christmas Carol" as the production to be used during the Christmas season. During his last season at Lindenwood, Van Tassel produced "The Wizard of Oz" in December, 1980. In 1981, Robert Peffers became chairman of the department and he produced "Alice in Wonderland" in December of that year, only to return to performing "A Christmas Carol" the following two years.

This Christmas season, "Peter Pan"

will be produced to provide a change. Kenst said that a change was necessary, but could not project if "A Christmas Carol" will be slated again for next year.

Charles Dickens' "A Christmas Carol" was an area favorite because it fit in well with the Christmas season and attracted a large audience. The theatre department hopes that this year's production of "Peter Pan" will attract a high attendance also.

According to director David Hoover, this year's production of "Peter Pan" is a fantasy about a young boy's desire to be mothered and his resistance to growing up. The script has been adapted to recapture some of the original flavor of J.M. Barrie's novel. Hoover thinks of the production as a pioneer experience that relates "a sense of the adventure of child-

hood" to himself. He wants his audience to be "free to interpret the play's message in its individual way."

Both "A Christmas Carol" and "Peter Pan" involve large casts, special effects, and appeal to children as well as adults. Because of the spirit of these productions and their extravagant staging, they fit in well with the Christmas season.

This year's production of "Peter Pan" will be presented on November 29 and 30, and on December 1, 7, 8, 14, and 15 at 8 p.m. Matinees on December 2 and 9 at 2 p.m. also are scheduled.

Reservations for the performances may be made by contacting the Lindenwood Box Office at 946-2004 or 946-6912 extension 252. Box office hours are from noon until 5 p.m. Monday through Friday. Single ticket prices are \$5, \$6 and \$7.

## ...Brings its Magic to Lindenwood

By Mary Graveman

Peter Pan's secret ability to fly through Lindenwood's Jelkyl Theatre is "the magic of theatre" and "fairy dust" said director David Hoover.

"Peter Pan," Lindenwood's Christmas production, "is a fantasy about a young boy's desire to be mothered and his resistance to growing up," said Hoover. His personal interpretation of the play's message is that of "trying to retain a sense of the adventure of childhood." Hoover also stated that he wants his audience to feel free to interpret the play's message as

only an individual can. "Whatever they get from it is what it is about," said Hoover.

Hoover worked closely with Robert Peffers, chairman of Lindenwood's department of performing arts, to incorporate more of J.M. Barrie's original novel *Peter Pan* into the production. In order to recapture the flavor of the original novel, Hoover and Peffers are adding more of Barrie's imaginative descriptions into the play.

Hoover, a graduate student at Lindenwood earning his master's degree in direction, received a bachelor of art's degree from New Mexico State University and studied with playwright Mark Medoff. When adapting the script and developing the theme of his production of "Peter Pan," he explored the concepts of mothering, being mothered and growing up.

The production is a pioneer experience because of its adapted script and explored themes. Hoover believes that one "must take a risk, change, plunge ahead" in order to gain new ground not yet explored. "Nothing ventured, nothing gained," he said.

Because of its large cast, special effects and many performances, this production will present a challenge to its staff, crew and cast. Hoover, along with other Lindenwood students and outside artists, will be devoting additional time and effort to the success of the production.

The production staff includes Peffers as

the producer; Hoover as the director; Tom Owen, scenic and lighting designer; Niki Juncker, costume designer; Billy Langfelder, movement consultant; Doug DeWoody, technical director and Dara Townsend, stage manager. The students in the cast include Wes Morgenthaler as "Peter," Robbie Scoggins, Kristin Nolte, Lisa Albert, Aaron Altman, Chris Cunningham, Charles Enzenauer, Maria Fortune, Joe Golden, Bob Goode, Judy Houston, M. Francis Kohring, Karen Long, Raub McKim, Abe Mills, Keith Muessigmann, Tom Mydra, Andy Ohlms, Gail Payne, Dirk Pointer, Bryan Reeder, Joni Shoemaker, Glen Bahr and Len Stagoski.

Performances of "Peter Pan" will be presented on November 29 and 30, and December 1, 7, 8, 14, and 15 at 8 p.m. with

See 'Peter Pan', page 9.

Yearbooks, from page 5.

editors of this year's book. Steve Truesdell serves as photography editor, with David Hanifon as layout editor and Glen Bahr as business manager. There are approximately 20 other staff members.

Receiving date for the yearbook's is August 18, 1985.

KCLC, from page 4.

chains donated food for the workers at the station for their fundraising efforts.

Leah Hollenberger, operations coordinator at KCLC, said the fundraiser went very smoothly and received good reaction from its listeners, with the average pledge increasing from previous years. A second fundraiser is planned for April 3-14.

The mood is optimistic at KCLC and its staff believes it can raise the \$100,000 needed in order to increase the power and program quality. However, student and listener support of the station is important due to the fact that KCLC is a public radio station and therefore funded by its listeners.



# College Appoints New Campus Chaplain

By L.J. Launer

The Rev. George R. Wilcox has been named the new college chaplain for Lindenwood College. He also will serve as associate pastor at St. Charles Presbyterian

Church Gamble and Sibley Sts., in St. Charles.

With his dual role, Wilcox will be able to converse with students for any counseling or spiritual sessions. His appointment also retains strong relations between the church and the college.

Wilcox, a native of Caldwell, N.J., is a graduate of Berkhoven High School in Columbus, OH. He received a bachelor's of arts degree in religion from Wittenberg University, Springfield, OH in 1980. While at Wittenberg, he explored religion courses and became interested in being a minister. "My family was involved in the church, and it was this family influence that got

me interested in becoming a minister," Wilcox said. His father also is a Presbyterian minister.

Wilcox received a master's degree in religion from Princeton Theological Seminary, Princeton N.J. It was while serving in an internship at Mount Clemens, MN, that Wilcox feels best prepared him for his new roles at Lindenwood and St. Charles Presbyterian Church.

The role of college chaplain will be challenging for Wilcox since there has not been a college chaplain in more than a decade. Wilcox feels that he wants to be responsive to student needs. "I always

want to keep an open door," he said, "If a student wants to see me about something, I will always try to help in any way that I can."

An office for the new chaplain has been established in Roemer Hall, Room 211.

By L.J. Launer

With the Rev. George R. Wilcox's arrival here at Lindenwood and the St. Charles Presbyterian Church, the church building has undergone some renovations. The church also is used as part of the Child Development Laboratory for Lindenwood.

Some of the church offices, including Wilcox's office have been made from larger rooms which were once for Sunday school and parts of the lab. Finishing touches on the church were made on Wednesday, November 14.

The church has undergone renovations in order to improve its general condition. Many of the offices were very small with some compared to the size of walk-in closets. The renovations also are a result of the improved relations between the St. Charles Presbyterian Church and Lindenwood College.

# 'Christmas Walk' Set December 9

By Mollie McGrath

Picture 500 luminarios lighting the pathway, carolers singing Christmas songs, traditional wreaths hanging on doors, red ribbons wrapped around light poles and jolly St. Nick with laughing children in his

lap. Sound like the perfect Christmas setting?

Lindenwood College is presenting the St. Charles area with a holiday gift: its Second Annual Christmas Walk.

The Christmas Walk will take place December 9 from 4-6 p.m., and will include many forms of entertainment. After Lindenwood President James I. Spainhower greets guests in Roemer Hall, student and faculty guides will provide tours of the campus. Lindenwood's Women's Ensemble will perform carols at designated sites on the campus and performances by the Niedner Handbell Choir of Immanuel Lutheran Church, St. Charles, also are scheduled. The college's Brass Quintet led by Gene Henderson, chairman of the education department, also will be featured.

Santa Claus will be on the campus to take orders for Christmas presents from the children. Parents are encouraged to bring their cameras.

In addition to this year's festivities, the

St. Charles chapter of The Salvation Army has placed its Tree of Lights at Kingshighway and First Capitol Dr. The Lindenwood College department of performing arts will present a matinee performance of "Peter Pan" at 2 p.m. that day, and the Madrigal Dinners also will take place after the Walk at 7 p.m. The Madrigal Dinners are a recreation of Elizabethan holiday feasts, with gourmet food and entertainment provided by the Lindenwood Chamber Singers. Reservations for both "Peter

Pan" and the Madrigal Dinners can be made by contacting the box office at 946-2004 between the hours of noon and 5 p.m., Monday through Friday.

Patricia Burns, a recent addition to Lindenwood's public relations department and chairman of this year's Walk, has good expectations for the event. "This is Lindenwood's gift to the community and we hope everyone will come to share the holidays with us," she said.

# 'Never On A Monday'

By Steve Truesdell

It started out like any other Monday night, I had a 20-minute walk home in the rain. Got soaked clear through to my "Fruit-of-the-Looms." As I slushed up to my room, dried off and slipped into some freshly-pressed "Laurens", I sat down to do some homework and discovered "writer's block."

A knock at my door revealed my old buddy, Johnny, a fellow mental block sufferer that evening, who suggested we go to Bogart's for 35-cent brews and people-watching.

First of all, let me explain Bogart's West to those of you who have never had the

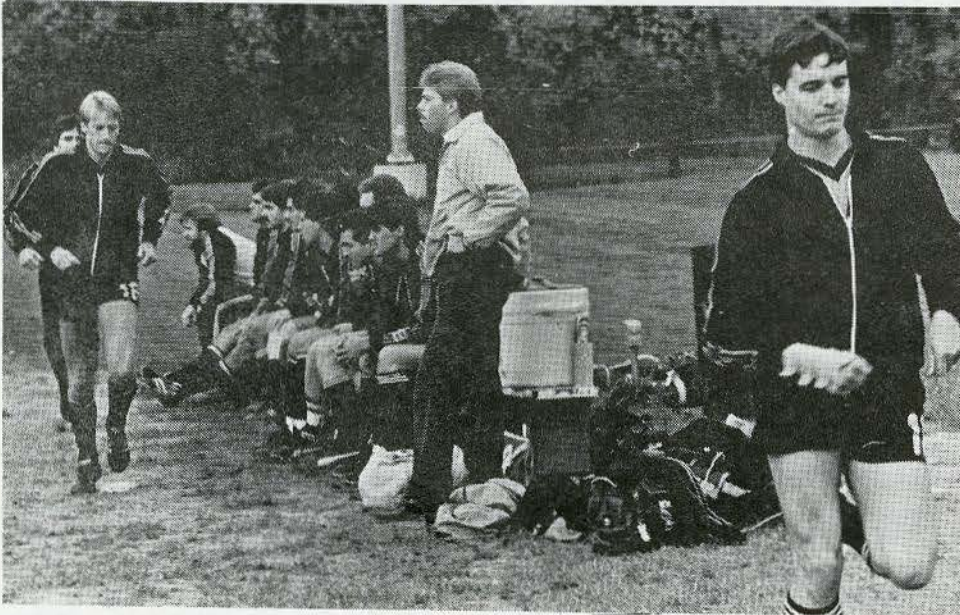
pleasure of attending such a fine establishment. It is the "cream" of the West County

See 'Writer's Block,' page 10

'Peter Pan,' from page 8.

matinee performances on December 2 and 9 at 2 p.m. For reservations, call the Lindenwood Box Office at 946-2004 or 946-6912 extension 252.

Full-time Lindenwood students may pick-up one free ticket to "Peter Pan" by using their theatre activity card. Box office hours are from noon until 5 p.m., Monday through Friday. Ticket prices for the general public are \$5-\$7.



Lindenwood kickers Mark Brewer (left) and Jerry Barrett warm up under the watchful eye of first-year coach Joe Olwig during the Cardinal Newman match at the Soccer Park in Fenton, MO. Photo by Steve Truesdell



Todd Herr and Jennifer Fear share a pose at the Lindenwood Homecoming Dance, October 6. Photo by Sam Reading

## A Guide to A 'Happy' Hour

By Bea Lush

After four years of extensive research in and around the St. Charles area, I have compiled my very own Happy Hour Guide.

In it, you will find everything you ever wanted to know about food and drinks, but were afraid to ask. The guide covers prices, hors d'oeuvres, carding policies, and yes, even entertainment offered within 10 miles from the Lindenwood campus.

As a favor to the editor, I have agreed to share a few notes with the LEDGER audience. I hope you will find these "helpful

hints" useful for all your partying needs!

Classic Carriage and Car Company—Located at 1600 Heritage Landing off Highway 94, "Classic" has the longest happy hour everyday: from 11 a.m. to 7 p.m. and from 10 p.m. to 1 a.m., Monday through Saturday, there are "two for one" bar drinks. Starting at 4:30 p.m. each day there is a free "munchie" bar which includes "make your own tacos" and "spicy chicken wings." Sunday night is ladies night from 7 p.m. to midnight, with bar

'Writer's Block', from page 9.

set. Its patrons include YUPPIES (young, urban preps), 60s refugees (who still wear their hair down to their waists), and a fair share of young girls in designer jeans and un-designer sweaters ( a perfect "0".) This is Bogart's.

Soon, I found myself inside this "William Burroughs nightmare" standing behind the band-St. Louis' version of the Go-Go's, with a clear view of its audience. I found my senses becoming dulled by endless Tom Selleck clones, complete with Magnum P.I. mustaches and undergrown beards.

On the dance floor, a man with bright red hair and a golf hat danced a maddening drunken-disco shuffle. Casually pulling off disco spins and pushing on everyone around him, "Mr. Golf" was classic in new sweat pants and a button-down shirt, and thought himself St. Louis' new slam dancer

Suddenly, a 6-foot Charlie Daniels look-alike was standing next to me. "Hey man, that's some funny haircut ya'll got," he said. (This man was obviously referring to my easily-combed hairdo.)

"I don't mind those things really, as long as it ain't too wild-you know, like those people who dye it bright colors," he stuttered, while he casually drank a JD straight. During the next half-hour, we proceeded to have an in-depth discussion about kids who watch too much MTV, cut their hair funny, make it stand up, or worse, dye it. He concluded our discussion with the simplest of suggestions: "Why don't ya'll just grow it long like we did?"

The conclusion of our discussion brought me to the moral of this story: if you don't need this kind of educated thinking, stay home on Monday nights and overcome writer's block.

drinks only 25 cents for all ladies. Sunday is the only night they offer a D.J. spinning records, so take some "interesting" friends for entertainment during the rest of the week. (The dance floor is small, anyway.) Trust me on this one.

The Brass Spur—Take I-70 west to the Cave Springs exit; go ¼ mile on the North Service Road and look for the signs. Every Monday through Friday from 3 to 7 p.m., you can cash-in on their "two for one"

See 'Happy', page 11.

# sports

## Basketball Lions: 'On the Right Track'

By Marc Schwering

The Lindenwood Lions basketball team started their season "on the right track" by winning two out of three games.

This year, the Lions motto is "on the right track" and has proven its abilities thus far by scoring a winning record.

The Lions began its season November 9 at the Westminster College tournament against Columbia College. The Lions barely passed by Columbia, winning 63-62.

On November 10, the Lions returned to Westminster to play that team and fell to the score of 68-65. "I think the traveling may have been a factor," said returning Lion Eric Reinsfelder. Reinsfelder is one of four returning basketball Lions for the Lindenwood team.

The Lions returned on November 14 to play their first home game against Cardinal Newman College, and cake-walked over the Cavaliers. The final score was 93-37.

The Lions may prove it is "on the right track" again when it continues its schedule, playing against even tougher opponents. "But, as they play they will improve," said Lions coach Bob Benben.

By Marc Schwering

Optimism is the outlook for the Lindenwood Lions basketball team this year.

This optimism is mainly brought about by the team's schedule. This year, the Lions will be playing top-rated universities such as Southern Illinois-Edwardsville, DePauw and Northwestern State.

Coach Bob Benben is entering his second year at Lindenwood. This tougher schedule was one of the goals Benben was trying for this year as well as improving the team.

The Lions have only four returning players from last year's team. However, Benben was successful in recruiting eight new, promising players.

"Coach Benben did a great job of recruiting," said Eric Reinsfelder, a sophomore returning Lion.

Benben is a man who believes in goals. After setting one goal of scheduling tougher competition, he is ready to set another: a .500 record.

"The tougher schedule will help us more than hurt us," said Earl Austin, a Lions returning junior. According to Austin, the schedule will help make the team tougher and help make a name for the team which

will help in future recruiting.

"Our goal is improvement," Austin and Reinsfelder concurred, "the team hopes to be a better team than last year's club."

### SPORTS COMMENTARY

By Earl Austin

With the 2-1 victory over Parks College, the college careers of nine Lindenwood Soccer players ended in high style.

For the past four years, the names of Vic Avellino, Jerry Barrett, Chris Boschert, John Costello, Tom Donovan, Bob McKeon, Dave Toigo, Gary Winschel and Bill Wright have been synonymous with Lindenwood Soccer. These nine have formed the nucleus that would turn the Lindenwood soccer program into a small college power.

Among their many contributions include over 40 victories, the school's first-ever playoff appearance plus valuable leadership that every winning team needs.

"I couldn't have played with a better bunch of guys," said Toigo. "I've developed friendships on and off the field that will last for the rest of my life," added Avellino.

Future soccer games at Lindenwood won't be the same without hearing such names as "Wilbur", "Flat", "Wunsch" and "Bosch".

The soccer program at Lindenwood will probably reach even greater heights, but we must not forget these nine building blocks of this success.

Thanks guys for your four years of hard work and leadership. You're all class individuals and your efforts will be sorely missed.

## Men's Soccer Sees Winning Season

By Earl Austin

The Lindenwood men's soccer team ended its 1984-85 season with a 2-1 victory over Parks College. John Powers and Vic Avellino scored the winning goals for the Lions.

After a slow start this season, the Lions got on track and went undefeated in seven matches. Among the team's victories were a 2-0 decision over district rival Avilla and a first-place finish in Lindenwood's annual tournament.

The Lions also defeated Webster University 4-0 at the Lindenwood Homecoming and took nationally-ranked Sangamon State University to overtime before losing 4-3.

First year coach Joe Olwig had many familiar faces in the line-up this season. This year's team included seniors Avellino, Tom Donovan and John Costello. Other returning players were juniors Powers, Todd

Herr and Marc Schwering and sophomores Dominic Condellire and Bob Herdler.

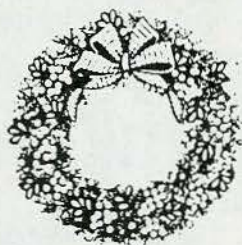
Olwig also had many new players contributing to the Lions' winning season. Junior Tim Mahoney provided strong defense throughout the season and the steady goaltending was evident from freshman Mark Olwig. Mike Baer, Mark Brewer and John Lindel also saw plenty of action.

'Happy,' from page 10.

drinks. The "Spur's" best offer is their ladies night: every Monday through Friday from 8 p.m. to 1 a.m. with drinks for 50¢. There are some "decent" bands scheduled, and if you want to wade through a lot of "decent" people, check it out. The "Spur" offers a large dance floor. However, watch out for the "bouncer's" at the door—they like to bounce on I.D.'s. No T-shirts or sweatshirts allowed.

Casa Gallardo's--One of the finer esta-

ishments in the Westport area, Casa Gallardo is located on the lower level of Westport Plaza across from the Westport Playhouse. Happy hour begins at 4 p.m. daily with "two for one" bar drinks and fantastic appetizers until 6 p.m. By then, you may have worked up to a "Why-not Margarita" that will shake your maraca's. Great way to start an evening. No dance floor-but with Mexican music, who wants to dance anyway?



*The staff of the Lindenwood Ledger and the Lindenwood Student Government would like to extend its best wishes for a happy holiday to Lindenwood students, faculty and staff.*

*The Ledger will resume publication in January, '85.*

1984-85 LINDENWOOD COLLEGE "LIONS"  
MEN'S BASKETBALL SCHEDULE

Nov. 9-10	Westminster College Tournament	Away TBA
Nov. 14	Cardinal Newman College	Home 7:30
Nov. 17	Sanford Brown College	Home 7:30
Nov. 19	McKendree College	Home 7:30
Nov. 22-23	Marion College "Titan" Classic (Indiana),	Away TBA
Nov. 27	University of Missouri at Rolla	Away 7:30
Nov. 30 -Dec. 1	Northwest Mo. State University Tournament	Away TBA
Dec. 5	Columbia College	Home 7:30
Dec. 8	Principia College	Home 7:30
Dec. 10	Parks College (Ill.)	Home 7:30
Jan. 9	Southern Illinois University—Edwardsville	Home 7:30
Jan. 12	Blackburn College	Home 7:30
Jan. 14	Southeast Missouri State University	Away 7:30
Jan. 16	McKendree College	Away 7:30
Jan. 18	Wabash College	W.U. 6:00
Jan. 19	DePauw University	W.U. 6:00
Jan. 21	Maryville College	Away 7:30
Jan. 24	Sanford Brown College	Away 7:30
Jan. 26	St. Louis Christian College	Home 5:00*
Jan. 28	Westminster College	Away 7:30
Jan. 30	Columbia College	Away 7:30
Feb. 2	Bartlesville Wesleyan College	Home 7:30
Feb. 4	Concordia Seminary	Home 7:30
Feb. 6	Parks College (Illinois)	Away 7:30
Feb. 9	Boys Club of St. Louis	Home 7:00
Feb. 13	Southern Illinois University—Edwardsville	Away TBA
Feb. 15	DePauw University	Away 7:30
Feb. 16	Wabash College	Away 3:00
Feb. 18	St. Louis Christian College	Away 7:30
Feb. 20	Cardinal Newman College	Away 7:30
Feb. 23	Principia College	Away 7:30

W.U. -Washington University Field House -both are home games.

\* Game will be played at Kiel Aud. 5:00 before the St. Louis U.—Evansville University game.

All home games played at St. Charles High School, Kingshighway and Waverly unless indicated otherwise.