

Lindenwood University

Digital Commons@Lindenwood University

Viewbooks

Lindenwood Historic Documents, Booklets,
Miscellaneous

11-1961

1961 Lindenwood College Viewbook

Lindenwood College

Follow this and additional works at: <https://digitalcommons.lindenwood.edu/viewbooks>



Part of the [History Commons](#)

V 135 #1 Nov. 1961

LINDENWOOD COLLEGE
SAINT CHARLES, MISSOURI



Nov 61



LINDENWOOD COLLEGE BULLETIN. Volume 135, Number 1, November, 1961. *Published bi-monthly by Lindenwood College.* Entered in the St. Charles, Missouri, Post Office as second class matter.



During its **135** year history "the education of young women to be enlightened and useful members of the community," as stated in the College Charter, is still the primary objective of Lindenwood.



McCluer Residence Hall

. . . from the President

It is the purpose of Lindenwood College to provide young women with an opportunity to achieve a liberal education of a high order. Accomplishment of this purpose involves the establishment of a wisely balanced liberal arts curriculum, cultivation of the Christian faith without sectarianism, guidance in relating competence in a given discipline to occupational goals, and responsible participation in the life of the campus community.

Whereas we are extremely proud of our 135 year history, we understand that a changing world demands an increasing excellence of all higher education. Achievement of this excellence is possible with a carefully selected student body, and a faculty of scholarly accomplishment devoted to teaching.

Any college presents an interesting group of courses to its students, but only a dynamic college offers them an exciting challenge. The Lindenwood campus community is a happy one, enriched by the friendship of teachers and students, and strengthened by an honor system of which we are proud.

A qualified student who chooses this college as a place to study and who makes full use of the opportunities it offers will find the four years here an exceedingly rewarding experience.



President and Mrs. McCluer at home

Sibley Residence Hall





Nicolls Residence Hall





Margaret Leggat Butler Memorial Library



A faculty distinguished in teaching, writing, research . . .





... inspire the selected student body to discover and evaluate the challenges they must meet in a dynamic world.



Roemer Hall — Administrative Offices and Classrooms

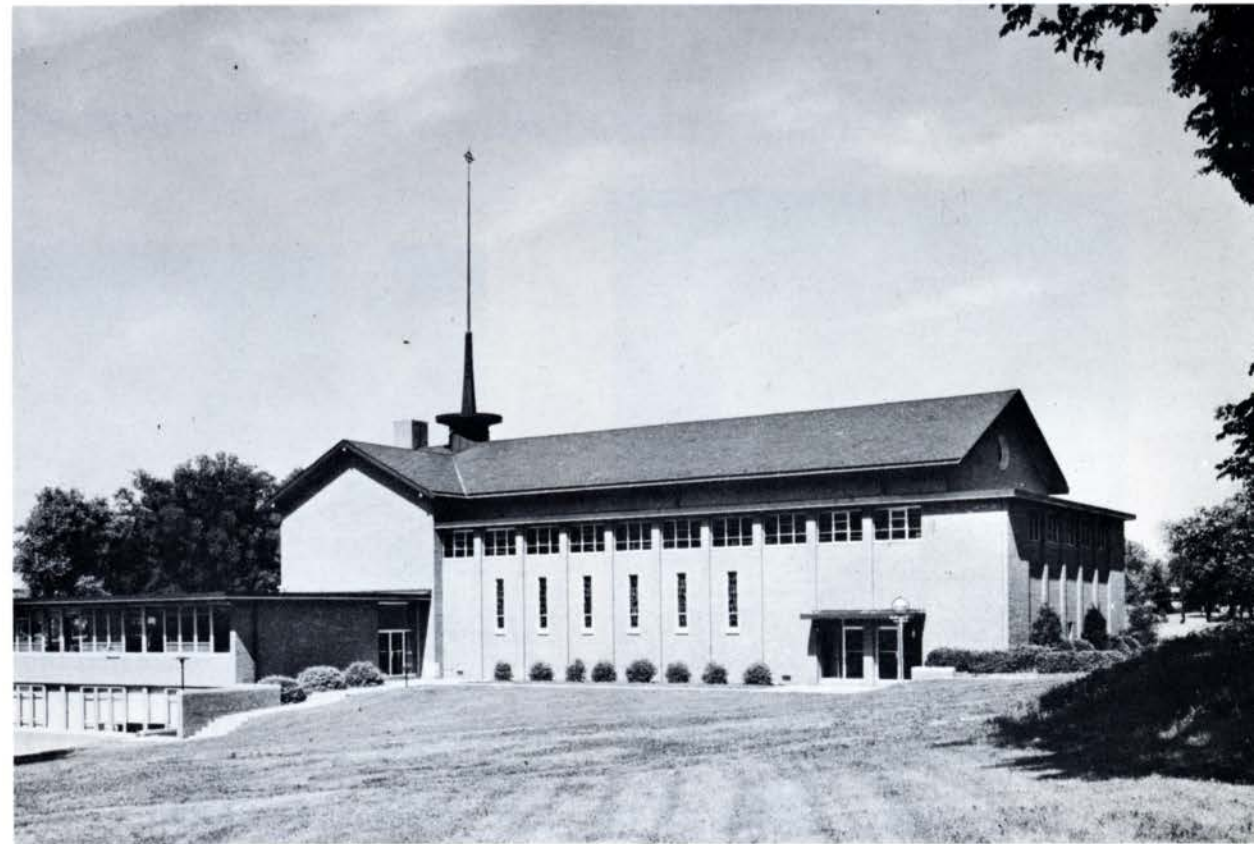




Learning does not end in the classroom . . .



... but continues in seminars and informal discussion groups.



Lindenwood Chapel



U.S. Senator Margaret Chase Smith

Distinguished campus guests enrich the College program . . .

Singer Richard Dyer-Bennet



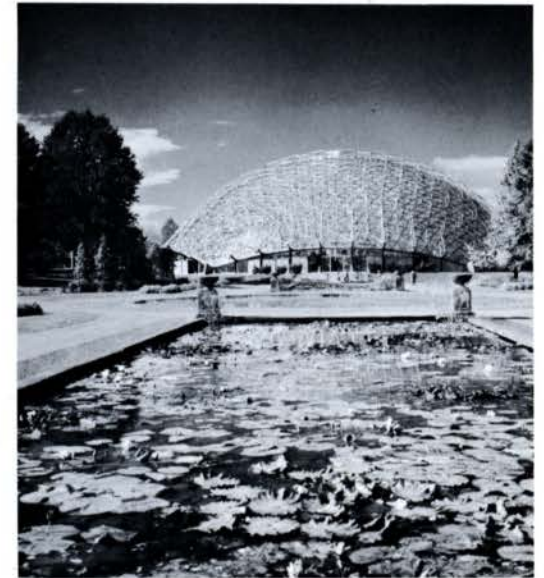
Philosopher Huston Smith

*News Correspondent
Nancy Hanschman*



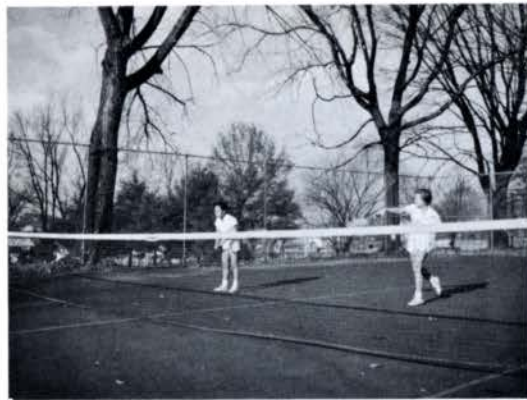


. . . and the students enjoy St. Louis concerts, museums, lectures, theatre.





Campus out-of-class activities help young women to become effective citizens in their communities.





Lillie P. Roemer Fine Arts Building





A Lindenwood degree . . .



... preparation for ...

Chemist



Attorney



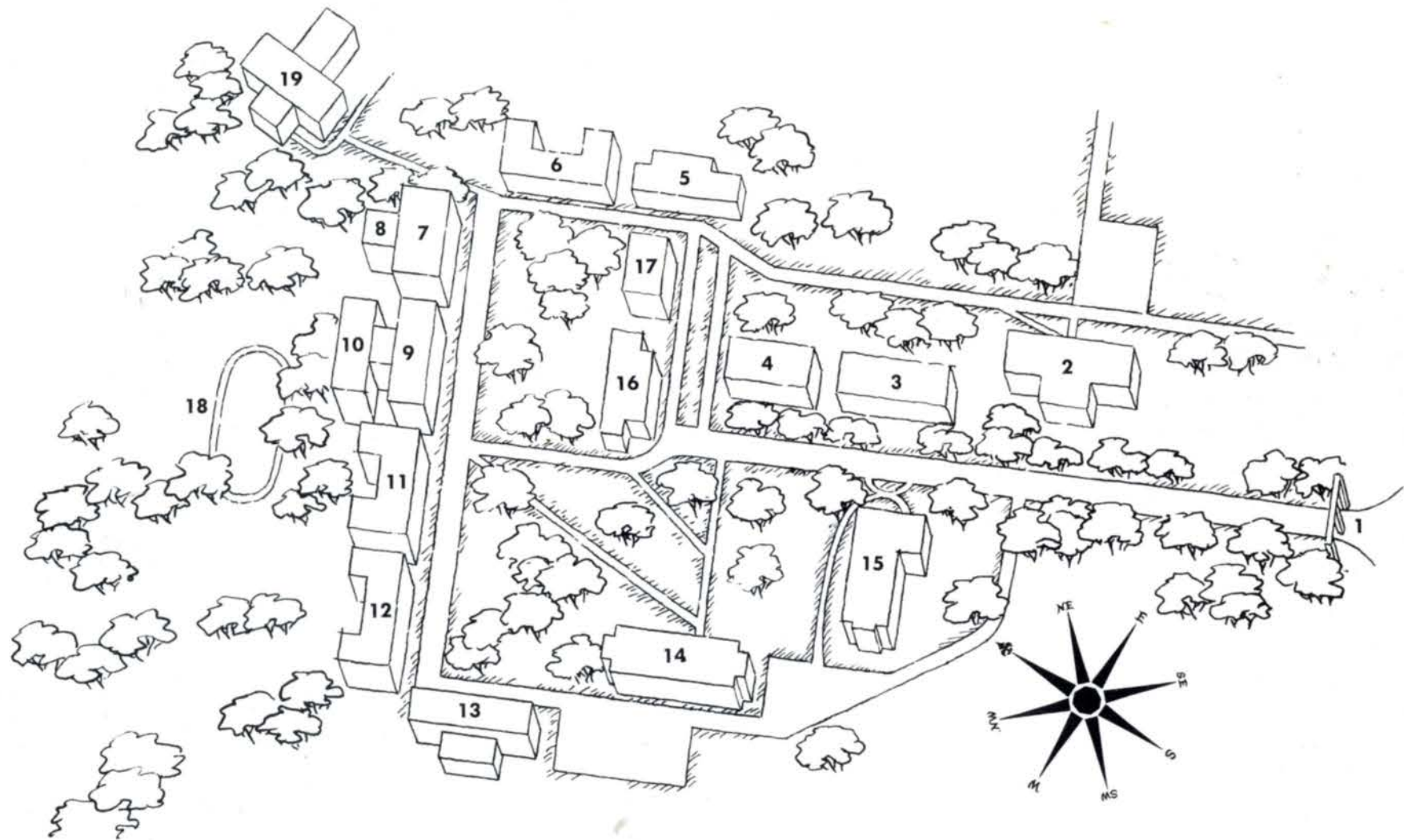
Singer



Teacher



Graduate Student



1. MAIN GATE

2. FINE ARTS BUILDING

3. PRESIDENT'S HOME

4. HEALTH CENTER

5. BUTLER LIBRARY

6. ROEMER HALL

7. BUTLER HALL

8. GYMNASIUM

9. AYRES HALL

10. DINING ROOM

11. SIBLEY HALL

12. NICCOLLS HALL

13. COBBS HALL

14. IRWIN HALL

15. McCLUER HALL

16. THE GABLES

17. McCLUER HOUSE

18. STABLES

19. CHAPEL

GENERAL INFORMATION

A VIEW OF LINDENWOOD

Founded	1827
Campus	140 acres
Endowment	\$7.8 million
Enrollment	615
Faculty	56
Fields of Study	19
Library Volumes	41,000

Lindenwood College is located in St. Charles, Missouri, an historic old river town of 23,000. All students must reside in one of the seven residence halls on campus or in their own homes in the metropolitan St. Louis — St. Charles area.

Lindenwood students come from 35 states and eight foreign countries. The cosmopolitan student body presents opportunities for sharing ideas among students of varying backgrounds.

Lindenwood is affiliated with the United Presbyterian Church, U.S.A. but enrolls students of various faiths and denominations. The students gather in the Chapel each Wednesday noon for a short chapel service and on Sunday evening for the College Vesper Service; both of these services are non-sectarian in nature.

Each student is a member of the Lindenwood College Student Association. Upon entering the College, the student accepts the Honor System as the determining principle in her academic and social life. A wide variety of extra-curricular activities and student organizations is open to all.

St. Charles' proximity to downtown St. Louis (twenty miles) offers unusual cultural opportunities. Chartered buses take students to the art museum, Shaw's Botanical Garden, and to concerts, lectures, plays, and operas.

The Social Director and the Student Social Council plan weekend parties and events with other colleges, including Washington University, Westminster College, Saint Louis University, and Missouri School of Mines.

For recreation, the students may use the facilities of the Physical Education Department: gymnasium, swimming pool, tennis courts, archery range, athletic field, and golf course.

The Office of the Dean of Students maintains a placement service for the registration of seniors and alumnae seeking employment. Also, assistance is given to students wishing summer employment.

ADMISSION REQUIREMENTS

Admission to Lindenwood College is open to students who are able to supply the Committee on Admissions with the following data:

1. A secondary school record which indicates the ability and desire to do satisfactory work at the level required in the Lindenwood program.
2. Satisfactory scores on *either* the Scholastic Aptitude Test of the College Entrance Examination Board *or* on the tests of the American College Testing Program. (NOTE: Freshman applicants for the 1963-64 school year, and subsequent years, *must* submit scores made on the College Board SAT.)
3. A secondary school record showing fifteen units of work, eleven of which must be in academic subjects. Four of these should be in English and the remaining may be in foreign language, history, social studies, the sciences, or mathematics. A single unit of foreign language will not be accepted unless the student offers two units in one other foreign language.
4. Letters from three references, attesting to the student's initiative and social and personal qualities.

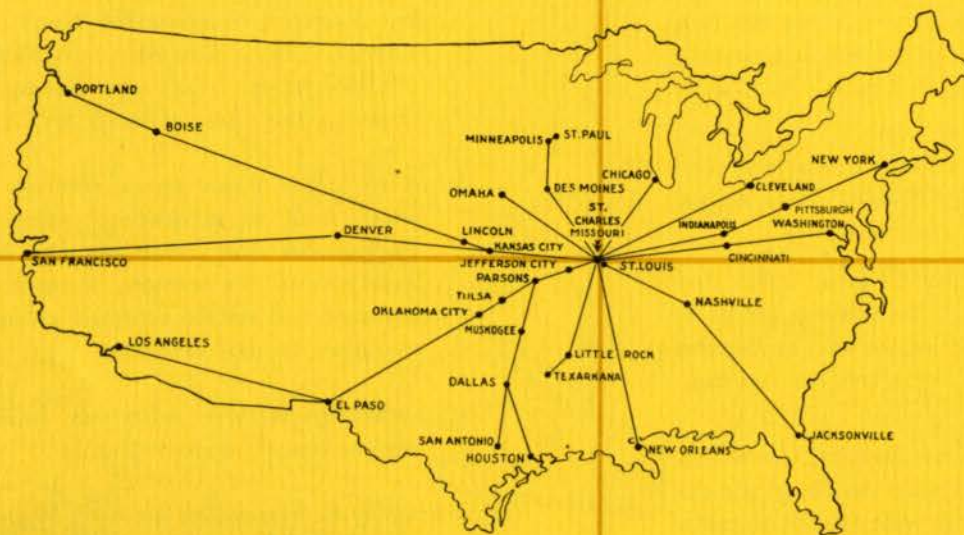
Admission *may* be granted on the basis of six semesters' work and satisfactory scores on the SAT taken in May of the student's junior year. Such admission is contingent on successful completion of her high school work.

FINANCIAL AID

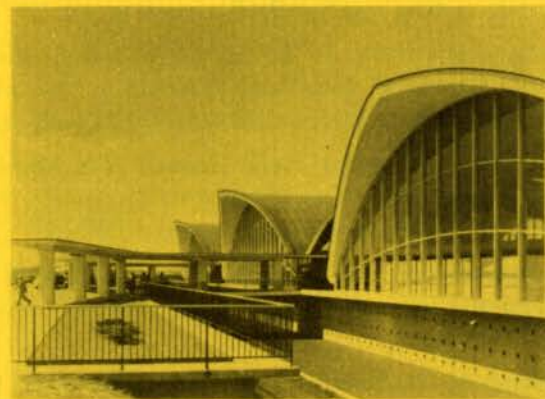
Many students receive scholarships and grants, and are employed on campus during the school year. In addition, National Defense Student Loans are available to qualified applicants. Please consult the current catalogue for details of the financial aid program.

FOR FURTHER INFORMATION PLEASE WRITE: DIRECTOR OF ADMISSIONS
LINDENWOOD COLLEGE
ST. CHARLES, MISSOURI

Just a few hours . . . to St. Charles — St. Louis



St. Louis Union Station



Lambert — St. Louis Municipal Airport



