

Lindenwood University

## Digital Commons@Lindenwood University

---

Athletic Guides

Athletic Guides and Season Schedules

---

Fall 1983

### 1983-1984 Lindenwood Lions Basketball Guide

Lindenwood College

Follow this and additional works at: [https://digitalcommons.lindenwood.edu/sports\\_guides](https://digitalcommons.lindenwood.edu/sports_guides)



Part of the [Sports Studies Commons](#)

---

#### Recommended Citation

Lindenwood College, "1983-1984 Lindenwood Lions Basketball Guide" (1983). *Athletic Guides*. 1.  
[https://digitalcommons.lindenwood.edu/sports\\_guides/1](https://digitalcommons.lindenwood.edu/sports_guides/1)

This Book is brought to you for free and open access by the Athletic Guides and Season Schedules at Digital Commons@Lindenwood University. It has been accepted for inclusion in Athletic Guides by an authorized administrator of Digital Commons@Lindenwood University. For more information, please contact [phuffman@lindenwood.edu](mailto:phuffman@lindenwood.edu).

*Comin' Back*

# LINDENWOOD LIONS



## 1983-84 Basketball Guide

*Lindenwood College is pleased to have you attend basketball events of the Lions this season, and is thankful for your support of our athletic program.*

*Under the direction of coaches Bob Benben of the men's basketball team and Christina Storey of the women's basketball squad, we look forward to a productive athletic season for our Lions, and we hope that you will share in our basketball rewards.*

*James I. Spainhower, President*

President . . . . .	James I. Spainhower
Athletic Director . . . . .	David A. Van Mierlo
Assistant to the Director . . . . .	Linda White
Faculty Advisor . . . . .	John Nichols
Men's Basketball Coach . . . . .	Bob Benben
Men's Assistant Coach . . . . .	Mark Hahn
Women's Basketball Coach . . . . .	Christina Storey

## Contents

Lions Basketball Outlook . . . . .	page 3
Team Photos and Facts . . . . .	4-7
Men's Basketball Schedule . . . . .	8
Women's Basketball Schedule . . . . .	8
Lindenwood Coaching Philosophy . . . . .	9
Basketball Coaches . . . . .	10
Lindenwood Cheerleaders . . . . .	12
Women's Team Photo . . . . .	13
Lindenwood College Facts . . . . .	14
1983-84 Basketball Scoresheet . . . . .	15

---

This year's basketball program, the first for Lindenwood College, was published by the Office of News & Public Information with editorial comment supplied by Coach Bob Benben and layout, design and photography coordinated by Randy L. Wallick, public relations director. It is funded in part by a grant from the Coca-Cola Bottling Co. of St. Louis. Proceeds from the sale of this program will be used to further expand athletics at Lindenwood College. Sincere appreciation also is given to Supt. Roger A. Deppe of St. Charles Public Schools and Al Darst of the St. Charles YMCA for the use of their facilities during the athletic year.

# Coach's Outlook for 1983-84 Men's Team

Beginning his first year as head coach of the Lions at Lindenwood College, Bob Benben has two returning starters from last year's team, which finished the season 6—22.

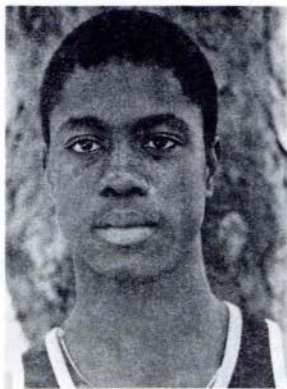
**Earl Austin**, a 6'2" sophomore forward who averaged 20.1 ppg, and **Kevin Kiner**, a 6'1" sophomore guard who averaged 13.9 ppg, are the returning players who are viewed as contributing much to the 1983—84 men's basketball program.

Coach Benben has signed 10 players to this year's roster—guards **Eric Reinsfelder**, 5'10" from Parkway Central High School, **Steve Fleschner**, 6'1" from Hazelwood East High School, and **Greg Clayborn**, 6'2" from Meramec Community College, frontliners are **Derek Ike**, a 6'3" forward from Vista High School in California, **Benji Evans**, a 6'4" forward from Salem High School, in Illinois, **Cedric Brooks**, a 6'1" forward of McCluer High School, **Chris Bryan**, a 6'6" center of Union High School, **Alexander Smith**, a 6'2" forward of Horace Mann High School in Indiana, **Fred Horskins**, a 6'5" center from Berkeley High School, and **Leonard Anderson**, a 6'4" forward out of Florissant Valley Community College.

Benben says the 1983—84 Lions will be a young squad and that the keys to its success lie in gaining experience, getting to know one another and learning the system of the new coach.

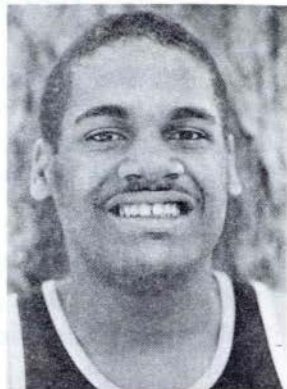
Benben's teams of the past always have been known for their tough aggressive defense, "and this one at Lindenwood will be no exception," he adds.

# Men's Team



**KEVIN KINER**, a 6'1" sophomore guard who averaged 13.9 ppg last season. Kevin will provide the experience and leadership in the backcourt which the Lions will need if the team is to have a successful season this year.

**EARL AUSTIN**, a 6'2" sophomore forward who led the Lions in scoring as a freshman with a 20.1 ppg. Again this year, he is looked to provide the Lions with some inside scoring punch.

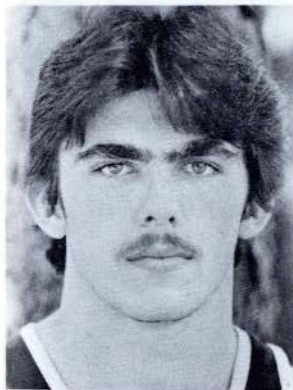
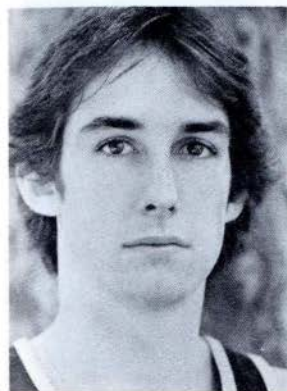


**ERIC REINSFELDER**, a 5'10" point guard out of Parkway Central who averaged 14.0 ppg as a senior. Eric needs to provide the Lions with good play-making from his guard spot along with good outside shooting and aggressive defense.

**STEVE FLECHNER**, a 6'1" guard out of Hazelwood East who should provide the 1983-84 men's team basketball with some perimeter shooting. Steve helped lead his team to a 17-9 season record in his senior year at Hazelwood East.

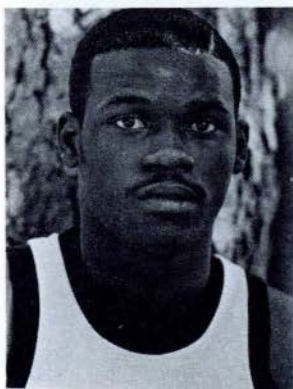


**DEREK IKE**, a 6'3" freshman forward who averaged 14.0 ppg in his senior year at Vista High School in California, whose team finished with a 21-5 season record. It is hoped Derek can provide the Lions with some outside shooting from his forward position as well as aggressive defense and rebounding.



**BENJI EVANS**, a 6'4" forward from Salem High School in Illinois who averaged 14.3 ppg and seven rebounds a game. Benji is looked to provide the Lions with solid inside play from his forward position, both in scoring and rebounding.

**CHRIS BRYAN**, a 6'6" center from Union High School who led his team in scoring, 15.0 ppg, and in rebounding, 11.0 per game. It is hoped Chris will provide the Lions with the good inside play it will need to be successful this year.

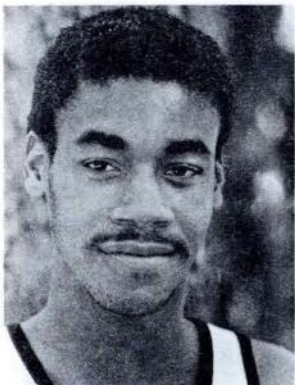


**GREG CLAYBORN**, a 6'2" junior who transferred from Meramec Community College. Greg is looked to give the Lions some added experience both at guard and forward positions. He is a good defensive player as well as being a good jump shooter from the perimeter. He will be eligible for play during the second semester.



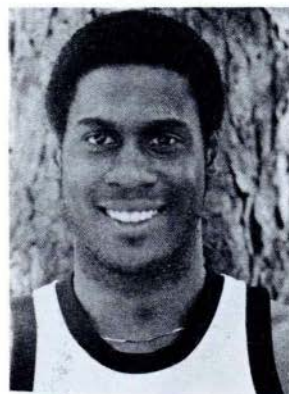
**CEDRIC BROOKS**, a 6'1" forward and guard who transferred from Missouri Valley College after graduating from McCluer North High School. It is hoped Cedric can provide the Lions with some rebounding and good defensive play. He will be eligible for play during the second semester.

**ALEXANDER SMITH**, a 6'2" freshman forward from Horace Mann High School in Gary, IN. Alex is a fine jumper with good quickness, and he has the ability to score offensively both inside and outside.

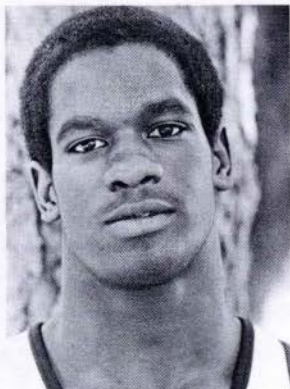


**FRED HORSKINS**, a 6'5" freshman center from Berkeley High School who has excellent potential. He is a very good jumper and, hopefully, can provide some rebounding and scoring from inside.

**LEONARD ANDERSON**, a 6'4" junior who transferred from Florissant Valley Community College. Leonard was a fine high school player at Hazelwood Central, and it is hoped that even after a one-year layoff soon he can regain his basketball form. He will be eligible for play during the second semester.

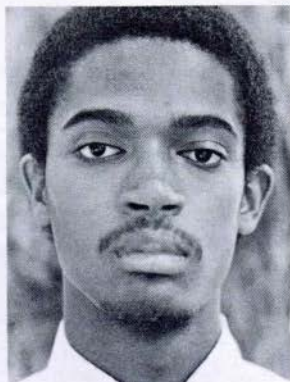


**WALTER WHITE**, a 6'2" junior, is a 1980 graduate of Troy High School in Michigan and a transfer student from Southwestern Michigan Community College. At age 24, White is expected to provide the Lions with some much needed experience for this young club.



**ROD HEARD**, a 5'11" freshman, is in the position of guard/forward for the Lindenwood Lions. A 1983 graduate of Cleveland High School in St. Louis, he is beginning his first year with the Lions.

**HENRY LENARD**, a 5'8" guard, is a transfer student from Maryville College who will be a junior at Lindenwood. He will be eligible for play during the second semester.



**GERALD BOLDEN**, a sophomore at Lindenwood, serves as manager of the Lindenwood Lions. A 1982 graduate of Northwestern High School in Hyattsville, MD, he played basketball on the Lions squad during his freshman year.





Coke is it!

*Coca-Cola*  
Trade mark®

*Coca-Cola*

*Coca-Cola*

*Coca-Cola*

# Basketball Schedule

Men	Date	Time	Opponent	Location
	12/1/83	7:30 p.m.	St. Louis Christian	Away
	12/3/83	7:30 p.m.	Maryville College	HOME
	12/5/83	7:30 p.m.	Parks College	Away
	12/10/83	7:30 p.m.	Sanford Brown College	HOME
	12/12/83	7:30 p.m.	Harris-Stowe College	Away
	12/15/83	7:30 p.m.	Maryville College	
	1/5/84	7:30 p.m.	UMSL	Away
	1/9/84	7:30 p.m.	Parks College	HOME
	1/14/84	5:30 p.m.	Harris-Stowe College	HOME *
	1/19/84	7:45 p.m.	Sanford Brown College	Away
	1/21/84	5:30 p.m.	Concordia Seminary	HOME **
	1/23/84	7:30 p.m.	Westminister College	HOME
	1/27/84	7:30 p.m.	Blackburn College	Away
	1/28/84	7:30 p.m.	St. Louis Christian	HOME
	1/30/84	8:00 p.m.	St. Louis Boys Club	HOME ***
	2/1/84	7:30 p.m.	Cardinal Newman College	HOME
	2/3/84	7:30 p.m.	Concordia Seminary	Away
	2/6/84	7:30 p.m.	St. Louis Boys Club	Away
	2/11/84	3:00 p.m.	Christian Brothers College	Away
	2/13/84	7:30 p.m.	Greenville College	HOME
	2/18/84	7:30 p.m.	Columbia College	HOME
	2/23/84	7:30 p.m.	Columbia College	Away
	2/25/84	7:45 p.m.	Avila College	Away

Except those noted, all home games are played at St. Charles High School, Kingshighway & Waverly Streets.

\* at Meramec Community College

\*\* at Kiel Auditorium in St. Louis

\*\*\* "Coca-Cola Night" featuring a doubleheader with the women's team vs. Maryville College

Women	Date	Time	Opponent	Location
	12/3/83	2:00 p.m.	Central Methodist Univ.	Away
	12/6/83	7:30 p.m.	Harris-Stowe College	HOME *
	12/8/83	4:00 p.m.	Forest Park Com. College	Away
	12/9/83	7:00 p.m.	Fontbonne College	Away**
	12/10/83	5:30 p.m.	Maryville College	Away
	1/7/84	1:00 p.m.	Millsap College	HOME ***
	1/11/84	6:30 p.m.	Granite City	Away
	1/13-14/84	TBA	Florissant Valley Tourney	Away
	1/17/84	7:30 p.m.	Harris-Stowe College	Away
	1/19/84	7:30 p.m.	William Woods College	Away
	1/25/84	6:30 p.m.	Granite City	Away
	1/27-28/84	TBA	Millsap College Tourney	Away
	1/30/84	6:00 p.m.	Maryville College	HOME ****
	2/2/84	7:30 p.m.	Fontbonne College	HOME ***
	2/4/84	3:00 p.m.	Principia College	Away
	2/6/84	4:00 p.m.	Forest Park Com. College	Away
	2/9/84	7:30 p.m.	McKendree College	Away

\* at Jefferson Junior High School, 2660 Zumbuhl Rd.

\*\* at Clayton High School, 7530 Maryland

\*\*\* at St. Charles High School, 3601 Droste

\*\*\*\* doubleheader with men's team at St. Charles High School, Kingshighway & Waverly Streets

# Coach's Philosophy

*My philosophy of coaching is based upon the same characteristics needed to wage a victorious battle against life's problems. Opportunity for advancement doesn't present itself often; therefore, one aim in coaching is to prepare the Lions to recognize opportunity when it comes and to make sure it does not pass them by.*

*I feel that a basketball game is like a chess match. The team that makes the most intelligent moves will win. We may change our style of play a number of times in attempting to find the formula needed to stop the opposing team. I feel the players will be better able to cope with life's problems after working with this type of play.*

*I instruct my players that there is lots of room in this world for a winner, but the "Standing Room Only" sign always is up for the loser. In life, you are always fighting to get ahead so you must develop a winning spirit. I insist that a player has this spirit, and that he keeps winning uppermost in his mind. Even with this winning spirit, it must be remembered that victory is a means to an end and not the end itself.*

*I teach my players to be humble winners and gracious but hard losers. A "gracious but hard loser" is one who takes defeat graciously but who hates to lose. I feel that a hard loser, who suffers an occasional defeat will profit by that defeat. He will think and talk over the cause of defeat and will make sure that the same cause never defeats him again.*

*I feel that most games are lost by the team that makes the most mistakes, so I stress the difference between intelligent mistakes and wild mistakes. An intelligent mistake is one where the player makes the correct maneuver but fails to carry out the play because of some unforeseen circumstance. This type of mistake we forgive, but one in which we work to eliminate. A wild mistake is an attempt to do some act the player should never have tried in the first place. This one we do not condone even if it is successful.*

*I feel that man is made mostly of spirit, and when his spirit is gone, the physical avails little. I will sacrifice a player with natural ability for one with a burning desire to excel, to be the best who ever lived. I feel that the coach should be a living example of enthusiasm—even more than his most ardent player. As Emerson said, "Nothing great was ever achieved without enthusiasm."*

*When a player graduates, I like to feel that I have left something with him besides basketball skills. If he really plays the game, he will learn many character traits that have a strong carryover to life's problems. Some of these include the development of citizenship, sportsmanship—how to win humbly and lose graciously, loyalty to himself and others, dependability, honesty, respect for authority, tolerance, initiative, confidence, self discipline, courage, leadership, the ability to live with others, personality and the development of an unselfish pride in his work.*

*As General McArthur nobly said it, "On the field of friendly strife are sown the seeds which in other years and other fields will bear the fruit of victory."*

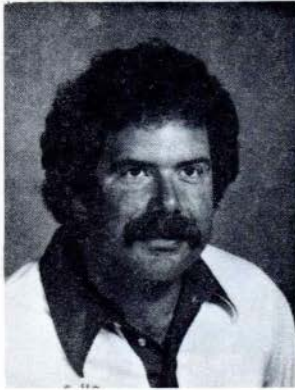
**BOB BENBEN, Men's Coach**

A physical education teacher at Pattonville High School, Benben is a 1964 graduate of Washington University and has a master's degree in secondary education from the University of Missouri-St. Louis. Prior to joining Lindenwood, he served as coach at Pattonville from 1967-83, guiding the team to the quarter-final round of the state tournament in 1976-77. Well-known in the area, Benben has served as an instructor and coach at Augustinian Academy College Preparatory School and as a part-time assistant coach of St. Louis University Club football.



**MARK HAHN, Assistant Men's Coach**

Named as assistant coach of the men's basketball team is Mark Hahn. A 1979 graduate of Pattonville High School, Hahn currently is pursuing his undergraduate degree in physical education at the University of Missouri-St. Louis. He played basketball and baseball at Pattonville and served as a pitcher for UMSL's Rivermen.



**TOM CELA, Lions Trainer**

Serving as trainer for the Lindenwood Lions is Tom Cela, a math teacher and district athletic trainer at Francis Howell High School. Cela, who holds a master's degree in athletic training from Central Missouri State University, is state certified as an Emergency Medical Technician and also is certified as a trainer with the National Athletic Trainers Association.

**CHRISTINA STOREY, Women's Coach**

Named as coach of the women's basketball team this year at Lindenwood College is Christine Storey, a teacher at Ritenour High School in St. Louis. She serves as freshman women's basketball coach at Ritenour and as a soccer coach for the Special School District of St. Louis. She also serves as promotion coordinator for the St. Louis Steamers. Ms. Storey is a 1980 graduate of Fontbonne College where she majored in special and elementary education.



# Lindenwood Cheerleaders



LINDENWOOD CHEERS—Cheering both the Lindenwood College men's and women's basketball teams this year are members of the 1983-84 Cheerleading Squad. In the back row, from left, are Arlett McCain, a sophomore from St. Louis, Co-Captain Cindy Niggley, a junior from Overland Park, KS; Karen Rathz, a freshman from St. Charles; and Arinthia "Tweety" Colton, a freshman from Mount Vernon, IL. Kneeling, from left, are Stacey Cirar, a freshman from St. Ann; Co-Captain Connie Scrivner, a freshman from St. Charles; and Maria Slingerland, also a freshman from St. Charles. Not pictured is Liz Allen, a sophomore from Florissant.

# Women's Team



LINDENWOOD LADY LIONS—Members of the women's basketball team are, standing from left, Assistant Coach Dave Bates; Statistician Linda White; Sheila Franks, a guard and freshman from St. Louis; Mary Jo Fitzgerald, a guard and junior from Ferguson; Rose Amerson, a forward/guard and sophomore from Mounds, IL; Karen Gaines, a forward and junior from Chula Vista, CA; Manager Laura Ofner, a freshman from Highland Park, IL; and Coach Christina Storey. In the front row, from left, are Lisa Henderson, a guard and junior from Granite City, IL; Dianne Graff, a forward/center and junior from St. Charles; Tania Allen, a center and junior from St. Louis; Nancy Schrader, a center and sophomore from St. Charles; and Michelle Scott, a forward and junior from St. Louis.

# Lindenwood College

## St. Charles, Missouri



The men's and women's basketball teams at Lindenwood College compete in play for home games at either St. Charles High School, Kingshighway and Waverly Streets or St. Charles West High School, 3601 Droste.

Both teams are affiliated nationally with the National Association of Intercollegiate Athletics (NAIA). Locally, the men's and women's basketball teams are in the St. Louis Area College Athletic Association.

Admission to all home games is \$2 for adults and \$1 for children as well as faculty and staff members of Lindenwood College. With appropriate identification, all Lindenwood College students are admitted to home games free of charge.

Lindenwood College was founded in 1827 and is one of the oldest institutions of higher learning located west of the Mississippi River. Currently, it has the enrollment of 1,897 students who are pursuing associate, undergraduate and graduate degrees in more than 50 programs. In addition to its main campus in historic St. Charles, the 157-year-old institution operates off-campus facilities at five locations in metropolitan St. Louis and St. Louis County.

216

# Basketball Score Sheet

TEAM: **LIONS**

PLAYER	NO.	FOULS					1st HALF	2nd HALF	TOTAL POINTS
		1	2	3	4	5			
		1	2	3	4	5			
		1	2	3	4	5			
		1	2	3	4	5			
		1	2	3	4	5			
		1	2	3	4	5			
		1	2	3	4	5			
		1	2	3	4	5			
		1	2	3	4	5			
		1	2	3	4	5			
		1	2	3	4	5			
		1	2	3	4	5			
		1	2	3	4	5			
		1	2	3	4	5			
		1	2	3	4	5			

TEAM: \_\_\_\_\_

PLAYER	NO.	FOULS					1st HALF	2nd HALF	TOTAL POINTS
		1	2	3	4	5			
		1	2	3	4	5			
		1	2	3	4	5			
		1	2	3	4	5			
		1	2	3	4	5			
		1	2	3	4	5			
		1	2	3	4	5			
		1	2	3	4	5			
		1	2	3	4	5			
		1	2	3	4	5			
		1	2	3	4	5			
		1	2	3	4	5			
		1	2	3	4	5			
		1	2	3	4	5			
		1	2	3	4	5			
		1	2	3	4	5			



**Coke<sup>®</sup> is it!**

**Lindenwood College**  
St. Charles, Missouri