

LU Chronicle



October, 1999 • Volume 4, Number 2



Home is where the heart is

Sprit runs high at Lindenwood sports events during Homecoming. This year will feature football, volleyball and soccer.

Homecoming 1999 offers weekend of activity

The last Lindenwood Homecoming of the 1900s will offer an impressive slate of activities for students and alumni alike.

Homecoming 1999 will include events and activities to fulfill all tastes and interests, from athletics to the arts.

On Friday and Saturday, Lindenwood's women's volleyball team, which has been dominating this fall, will play in Lindenwood's own volleyball

tournament in the Hyland Performance Arena.

At 6 p.m. on Friday, the women's soccer team will take on Lindsey Wilson College in the Harlen C. Hunter Athletic Stadium, and the men's soccer team will play against Park College at 8 p.m. on Saturday.

The football Lions, now 3-2 after two consecutive victories, will play at 1:30 Saturday against Central Methodist College, and the new field

hockey team is scheduled to play at 9:30 a.m., also in the athletic stadium.

The women's soccer team will play again at 2 p.m. Sunday against Park College.

Halftime at the football game will feature a ceremony announcing the Homecoming court.

The annual Homecoming dance will be at 9 p.m. on Saturday at the LU Club, which

See Homecoming, page 2

Inside this issue . . .

News

Boone Memorial Weekend celebrates area heritage.....2

The Arts

The Mainstage Theatre Season opens with an 'Earnest' show.....3

Sports

Track coach Tom Culbertson has joined the LU coaching staff.....4

Homecoming from page 1

is located on Old Friedens Road, off Friedens Road, east of Highway 94.

Tickets for the dance cost \$10 in advance and \$12 at the door. They are sold in advance in the cafeteria and in the student activities office, 118 Butler Hall.

For more information about the dance, call Glen Waring at

949-4983.

A number of on-going art exhibits in the various Lindenwood art galleries will be available for viewing. Jeanne Kirkton's "Travels Through Russia" photography exhibit is in Harmon Hall's Hendren Gallery, and two student exhibits will open on Sunday.

An opening reception for I-Ching Kuo's graduate exhibit will be from 2 to 4 p.m. in the

Cultural Center, and Linda Bonebrake's senior exhibition will be from 2 to 4 p.m. in Studio East.

The final performances of the Theatre Program's production of "The Importance of Being Earnest" will be at 8 p.m. on Friday and Saturday in Jelkyl Theatre.

Admission to the play is free to Lindenwood students, and admission to the art exhibits is free to everyone.

Boone Memorial Weekend celebrates county's heritage

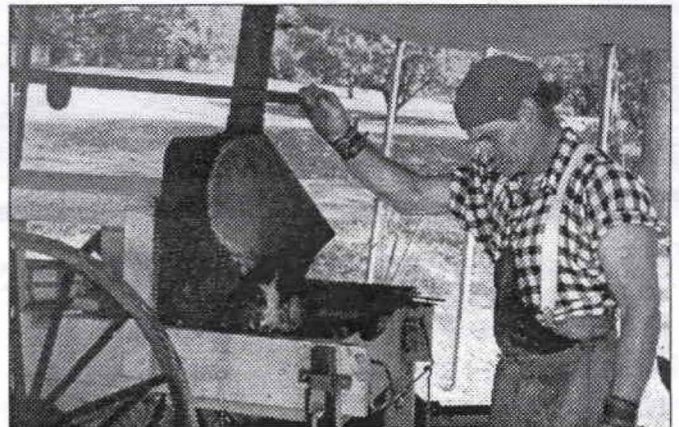
Lindenwood University and the Historic Daniel Boone Home in Defiance hosted a major event at the Boone Home last month commemorating the 179th anniversary of Boone's death.

The Daniel Boone Memorial Weekend featured participation from many facets of the Lindenwood community, who helped make the event a stirring and well-executed event.

The activities were held on the Boone Home grounds on Sept. 25 and 26 and included historic reenactors, tours of the home and other buildings a "Boone memorial service," a ceremonial tree planting and an organ concert that included accomplished organists from the ranks of Lindenwood's faculty, student body and alumni.

The concert, which featured American music, was held in the Peace Chapel on the Boonesfield Village grounds and utilized the chapel's Wick's pipe organ.

The memorial service followed the concert and included a "eulogy" by Lindenwood Student



Historic reenactors like this blacksmith were stationed throughout the Boone Home grounds during the Boone Memorial Weekend.

Activities Director Glen Waring. Afterwards, President Dennis Spellmann, Waring and a number of the reenactors took part in the planting of a commemorative tree in the new Boone Family Missouri Memorial Grove on the Boonesfield Village Green.

This year's Renewal forms are due for Lindenwood clubs and organizations

The student activities office requests that clubs and organizations on campus file their renewal forms for this year.

To obtain renewal forms, contact Glen Waring at 949-4983 or come by Butler Hall,

room 118.

The clubs that have renewed already are actively planning events, so look on the bulletin boards for the activities of the numerous clubs and organizations on campus.

'The Importance of Being Earnest' opens mainstage theatre season

The Lindenwood Theatre Program is off to a great start with its production of "The Important of Being Earnest," which opened last weekend and closes Saturday.

The play is regarded as one of the best from playwright Oscar Wilde and is being performed at many different stages this year to commemorate the 100th anniversary of Wilde's death.

Bryan Reeder director of the theatre program and the play, called "Earnest" a comedy of wit.

The play is considered by many critics to be the greatest comedy ever written. It is subtitled "A Trivial Comedy for Serious People" and tells the story of two men who have invented fictional identities in order to indulge in fun. These false masks are soon discovered and great comic confusion ensues.

The remaining performances will be at 8 p.m. on Oct. 15 and 16. Tickets, which are free to Lindenwood students with a valid ID, are available at the Lindenwood Box Office in Roemer Hall next to the theater.

Box office hours are 1 to 6

p.m., Monday through Thursday and 1 to 5 p.m. on Friday. For the general public, tickets cost \$6 for adults and \$3 for non-Lindenwood students and senior citizens. For further ticket information, call the box office at 949-4878.

Sophomores in the cast include Holly Alexander of Colorado Springs, Colo., as Lady Bracknell and R. Craig Horton of Southaven, Miss., in the dual roles of Lane and Merriman. Juniors include Jamie Pitt, of Memphis, Tenn., as Cecily; Gina Shannon, of St. Peters, as Gwendolen, and Joshua Rowan, of Ferguson, as Jack Worthing. Seniors in the cast are Dennis Folwarczny II, of Winfield, as Canon Chasuble; Matt Kahler, of



Tara Scotti

Jamie Pitt and Matt Kahler portray Cecily Cardew and Algernon Moncrieff in Lindenwood's Production of 'The Importance of Being Earnest.'

Lake Saint Louis, as Algernon, and Patricia Maniaci, of Wentzville, as Miss Prism.

The remainder of the Lindenwood Mainstage Season will consist of "A Christmas Carol" in November and December, the musical "Sweet Charity" in March, and the enduring Greek tragedy "Antigone" in April and May.

Music department to present Madrigal Dinners in Nov. & Dec.

Last year's revival of the Madrigal Dinners Lindenwood presented years ago was such a success, the holiday event is returning this year.

According to custom, the Lindenwood Club is transformed into Lindenwood Manor, and guests are served and entertained by characters

performing in the style of 15th century nobles and common folk in an evening filled with merriment, jests and song.

The cost for the evening is \$25 per person. For more information, contact Jim Henry at 916-1911 or Marsha Parker at 949-4906.

The remaining Lindenwood fall athletic schedule

Football

Oct. 16	Central Methodist	1:30
Oct. 23	@ Mid America	1:30
Oct. 30	Wm. Jewell	1:30
	(Parents Day)	
Nov. 6	@ Missouri Valley	7:30
Nov. 13	Butler University	1:30
	(Senior Day)	

Nov. 1-5 Conference Tournament

Cross Country

Oct. 16	Steggemoller Classic
Oct. 23	Central States Chmpnshp
Oct. 30	Lindenwood Open Invit.
Nov. 6	Conference Meet

Field Hockey

Oct. 16	SLU or Wash. U.	9:30
Oct. 22-23	KTT Tournament	7:30
	@ Greenville, Ind.	
Oct. 30	Washington U.	TBA

Men's Soccer

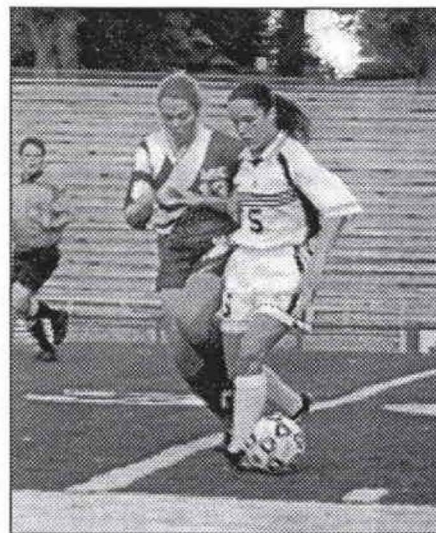
Oct. 16	Park	8:00
Oct. 20	@ Central Methodist	3:00
Oct. 23	@ U. of Ill. Springfld	7:00
Oct. 27	Columbia College	7:00
Nov. 2-6	Conference Tournament	

Women's Volleyball

Oct. 15-16	LU Tournament	
Oct. 19	@ Graceland	7:30
Oct. 20	Rockhurst	7:00
Oct. 22-23	Mo. Bapt. Tourney	
Oct. 26	Benedictine	7:00
Oct. 27	@ McKendree	7:00

Women's Soccer

Oct. 17	Park College	2:00
Oct. 24	@ Baker	1:00
Oct. 26	Central Methodist	7:00
Oct. 28	@ St. Ambrose	2:00



Tara Scotti

LU women's soccer has been dominant in recent years, and this season has been no different.

Former Olympic track coach Culbertson joins Lindenwood staff

Tom Culbertson, of Falls City, Texas, is the new assistant head track coach at Lindenwood University in St. Charles. Culbertson, who previously coached a college track and field team to a national championship, also joined Lindenwood's education division as an assistant professor.

Culbertson comes to Lindenwood from Floresville High School in Floresville, Texas, where he has served as an assistant principal and track coach since 1992. In addition to his secondary education career, which goes back to 1987, Culbertson has taught and coached track and field at the college level at Wayland Baptist College in Texas from 1985-87, where he was assistant to John Creer, current Lindenwood head track and field coach.

While there, Creer and Culbertson coached the school's men's and women's track teams to the NAIA indoor championships in the 1985-86 season. Culbertson also served as assistant track and field coach at the University of Texas at El

Paso in 1982 while working there as a research assistant during the completion of his master's degree.

Prior to that, Culbertson worked with Creer from 1979 to 1981, coaching the Saudi Arabian Olympic track and field team. In addition to his coaching achievements, Culbertson is an accomplished athlete in his own right and is the current holder of the pole vault records at New Mexico State University and Key West High School in Florida.

"John and I go back a long way," Culbertson said. "Every time John and I have worked together, we have been successful. He's like a brother to me."

Creer said Culbertson was his first choice for the position.

"Tom is tremendously talented and versatile, and he has had a lot of success as a track coach," Creer said. "We are very fortunate that he's here."